

REPORT IT!



REPORT IT!

Although our staff carry out regular patrols, we can't be everywhere at once. The City relies on the public to be its eyes and ears, and we are seeking your help.

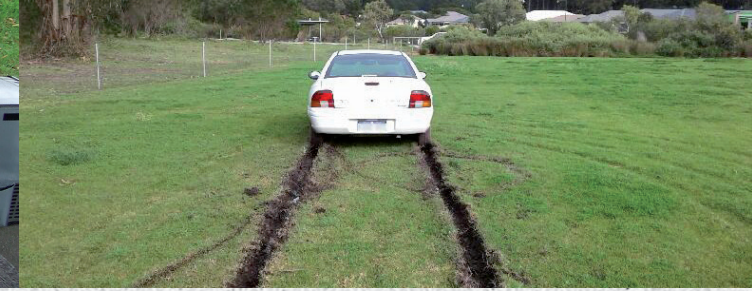
If you see any of these unlawful activities taking place, please use the "Report It" function on the City of Albany's website at www.albany.wa.gov.au. You can also report it by contacting the City on 6820 3000 (during business hours) and asking for the Reserves Team. For after hours emergencies such as a fallen trees, please call 6820 3940. For dog attacks and stray animals, please contact the Rangers on 6820 3999.



WWW.ALBANY.WA.GOV.AU

ENJOY IT!





WHAT IS PARK WATCH?

The City of Albany values the beauty of our town sites and we take pride in looking after our parks.

Park Watch is a program to raise community awareness of what activities are permissible on City of Albany managed parks, and what activities are not permitted or require a booking.

The Park Watch program also encourages people to keep an eye on parkland for any threats or damage, and to report them to the City.

PARKS ARE IMPORTANT AS THEY

- Provide venues for families and friends to gather and enjoy the outdoors.
- Create a feeling of wellbeing.
- Gardens, trees and artwork make a place look nice.
- Parks provide space for sporting games and getting fit.
- People can walk their dogs away from roads and houses

PARK BOOKINGS

If you are planning a meeting, wedding, school excursion, function or simply an informal get-together at a park, please ensure that you make a formal booking with the City of Albany on 6820 3000 so that you are fully aware of what is permitted at each venue. By booking a venue, the City can ensure that the location is not double booked and that routine maintenance of park grounds is not in progress.

To find out more about the facilities at parks in the City of Albany, please visit the City of Albany website at www.albany.wa.gov.au/residents/sports-recreation/parks/

Please note that the erection of shade structures requires approval, as these may damage underground services.

UNLAWFUL ACTIVITIES IN PARKLAND

One of the ways the City protects parklands is to put in place local laws that make it unlawful to use parks inappropriately. Unlawful activities in parks include:

- Damaging playground equipment and other park furniture;
- Littering and graffiti;
- Lighting a fire;
- Driving on grass or damaging trees or gardens; and
- Not picking up dog waste.

On the spot fines of up to \$350 may be issued to any person who is found to be carrying out any of the unlawful activities, and penalties of up to \$5,000 may be applied if the City decides to prosecute the offender in court.

For more information about the City's local laws, including the Property Local Law 2011, visit the City of Albany website at www.albany.wa.gov.au/council/council/local-law/.