

**16.2: MOTION BY COUNCILLOR WELLINGTON – ANZAC CENTENARY-  
INFRASTRUCTURE PROJECTS**

**ITEM 16.2: MOTION**

**Voting Requirement: Absolute Majority**

**THAT Item 16.2 be ACCEPTED as an urgent item.**

**ITEM 16.2: MOTION BY COUNCILLOR WELLINGTON (As Chair of the Audit Committee)  
VOTING REQUIREMENT: SIMPLE MAJORITY**

**THAT Council:**

- 1. Support the infrastructure developments for Mount Clarence and Mount Adelaide, formally named the Albany Heritage Park, in preparation for the Anzac Centenary and commemorative period from 2014 – 2019.**
- 2. As a partner in the Albany Centenary of Anzac Alliance, and as agreed by the Audit Committee on 13 September 2011, request the CEO to:**
  - Prepare the tender brief for the Anzac Centenary infrastructure projects;**
  - Progress approvals from the WA Heritage Council, SWALSC, DIA and RDL in preparation for the projects.**

**Councillor's Reasons:**

The City of Albany and Returned & Services League formed the Albany Centenary of Anzac Alliance (ACAA) in 2009 to plan the Anzac Centenary in 2014/15 where Albany will attract national attention.

There is significant infrastructure investment proposed for Mounts Clarence and Adelaide, with a total investment indicated at \$18.5 million.

The timeframe for infrastructure construction is now critical. A tender for consultant services for detailed design and superintendent functions must be awarded early November 2011 at the latest to meet construction timeframes. Accordingly, this matter cannot be held over for consideration to the October 2011 Ordinary Council Meeting.

**Officer's Comment (F James)**

Various infrastructure projects have been identified within the Albany Heritage Park in preparation for the Anzac Centenary in 2014/15, where Albany will be a significant place for commemorations.

Developed detailed design plans have been completed for Mount Clarence, as a component of the Albany Heritage Park.

An upgrade to the existing Mount Clarence car park at the base of Apex Drive has been identified as an additional project.

Infrastructure developments identified for Mount Adelaide include an Anzac Interpretive Centre, Discovery Walk connecting the upper and lower Forts, Barracks Galleries to develop exhibition space, an upgrade to the Forts Entry to improve safety and aesthetics and improvements to the Memorial Lookout space to enhance the existing amphitheatre concept.

A funding application to Royalties for Regions has been submitted by the ACAA for the construction of Mount Clarence critical infrastructure improvements and partial scoping for Mount Adelaide projects.

On the recommendation of the Federal Government's Anzac Centenary Commission, that Government has committed \$250,000 towards the scoping of an Anzac Interpretive Centre atop Mount Adelaide.

The projects in totality will facilitate the upgrade of the Albany Heritage Park as a world class visitor destination, delivering improved physical infrastructure, civic amenity and heritage interpretation.

The Anzac Centenary Infrastructure Coordinator (a City of Albany staff member) is in the process of preparing the request for tender for a consultant to undertake detailed design and superintendent functions for the Albany Heritage Park projects.

The tender brief will involve two functions (detailed design and superintendence) with the ability to award further separate project portions (Anzac Interpretive Centre, Barracks Galleries, Discovery Walk, Memorial Lookout Amphitheatre, Forts entry and the Mount Clarence car park) depending upon the availability of State and Federal Government funds.

Consultation with government agencies regarding the proposed developments has commenced. These include:

- WA Heritage Council
- Department of Regional Development and Lands
- South West Aboriginal Land and Sea Council
- Department of Indigenous Affairs; and
- Department of Environment and Conservation.

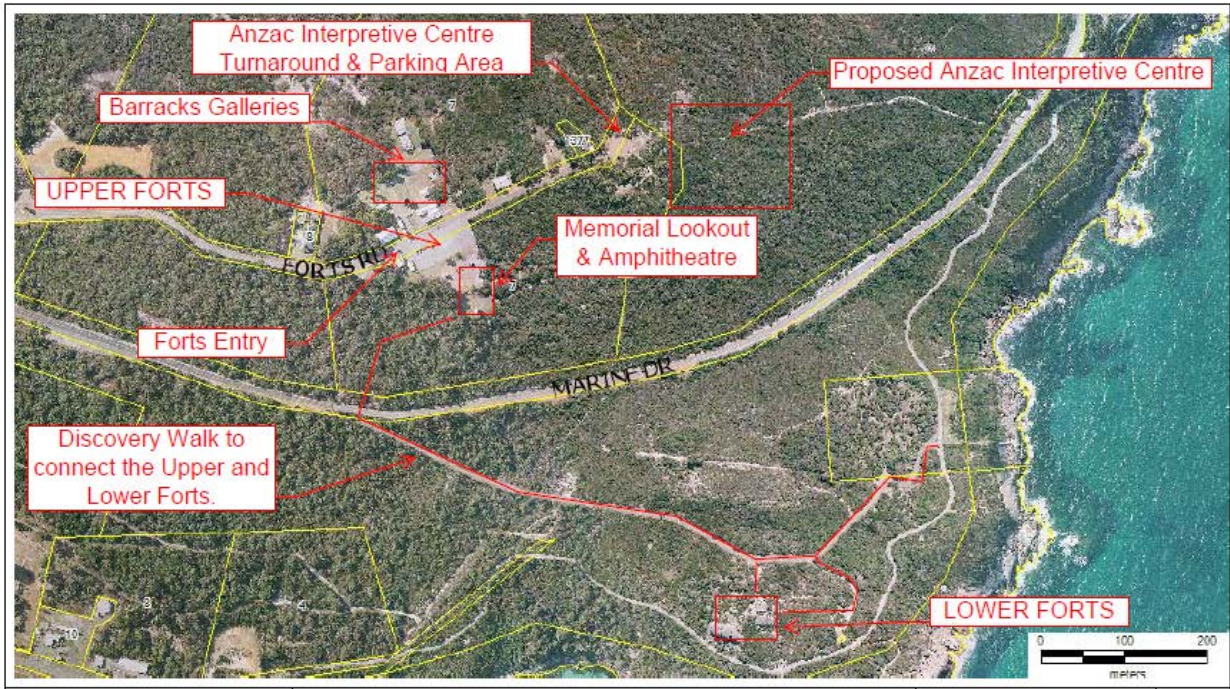
In accordance with Division Two – Regulation 11 of the *Local Government Act (Functions and General) Regulations 1996*:

- (1) Tenders are to be publicly invited according to the requirements of this Division before a local government enters into a contract for another person to supply goods or services if the consideration under the contract is, or expected to be, more, or worth more, than \$100,000.*

Council should also consider costs relating to on-going maintenance of assets. Lifecycle costings will be requested from the appointed tenderer.

The Albany Heritage Park infrastructure projects will be of great importance to the region and community, likely to attract large visitor numbers and economic benefits. Failure to act now may be detrimental to the success of Albany's Anzac Centenary.

**\*\*REFER DISCLAIMER\*\***



Map indicating proposed Mount Adelaide infrastructure development.