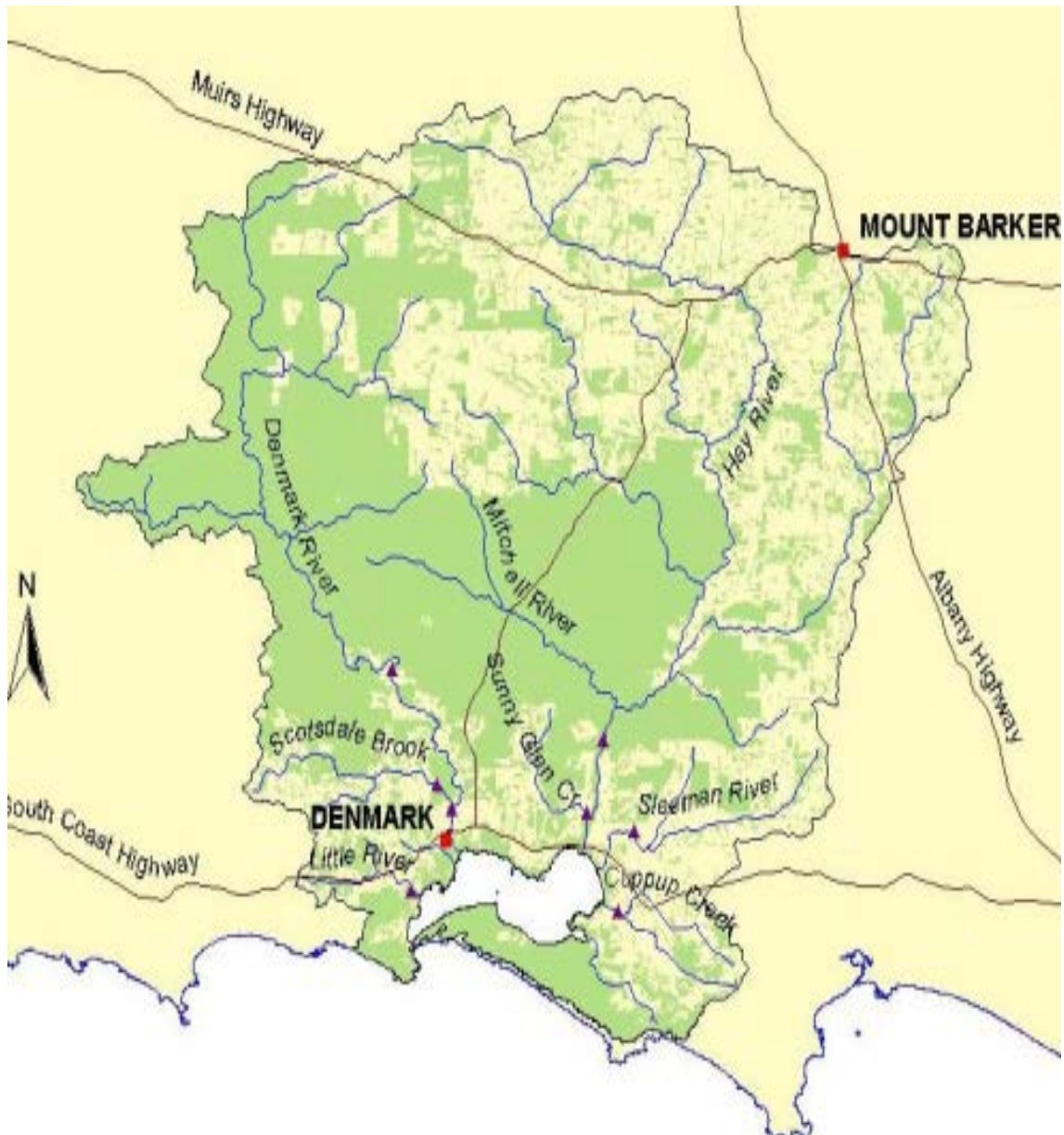


**5.2: WILSON INLET MANAGEMENT STRATEGY 2013- 2022**

- Land Description** : Wilson Inlet Catchment
- Proponent** : Manager Reserves on behalf of Wilson Inlet Catchment Committee
- Attachments** : Wilson Inlet Management Strategy 2013-2022
- Councillor Workstation** : Documents referred to in the report placed in the Councillor Workstation.
- Responsible Officer(s)** : Executive Director Works and Services (M Thomson)

**Maps and Diagrams:**

**Wilson Inlet Catchment**



### **IN BRIEF**

- Wilson Inlet Management Strategy 2013-2022 (WIMS) was developed by Wilson Inlet Catchment Committee and supersedes the Wilson Inlet Nutrient Reduction Action Plan 2003.
- Wilson Inlet Catchment Committee (WICC) are requesting endorsement by the City of Albany for the Wilson Inlet Management Strategy 2013-2022.
- The City of Albany will become a signatory to the document.

### **RECOMMENDATION**

**ITEM 5.2: RESPONSIBLE OFFICER RECOMMENDATION  
VOTING REQUIREMENT: SIMPLE MAJORITY**

**THAT Council ENDORSES the objectives and outcomes as detailed in the Wilson Inlet Management Strategy 2013-2022.**

### **BACKGROUND**

1. The Wilson Inlet Nutrient Reduction Action Plan 2003 was reviewed in 2012. This review resulted in the Wilson Inlet Management Strategy 2013-2022 being developed.
2. WICC received funding from Lotterywest to undertake the review. A steering group comprised of representatives from WICC, Department of Water, South Coast Natural Resource Management, Department of Agriculture and Food, Water Corporation, City of Albany, Shire of Denmark, Shire of Plantagenet and 2 community members. Technical expertise and input was provided by many other individuals throughout this process.

### **DISCUSSION**

3. Management of the Wilson Inlet Catchment involves a wide range of issues;
  - Assimilating nutrient from urban and rural catchment sources.
  - Water use efficiency and reuse.
  - Biodiversity and invasive species management.
  - Water quality monitoring and management.
  - Land use planning and climate change.
  - Community consultation.
  - Strategy resourcing, implementation and review.
4. A management strategy will support funding opportunities. Many volunteers and businesses will benefit from funding which is outcome focussed in line with the WIMS.

### **GOVERNMENT CONSULTATION**

5. The Wilson Inlet Management Strategy 2013- 2022 was presented at briefing sessions to Local Governments (Albany, Plantagenet and Denmark). Opportunity to comment on the strategy was available to these Local Governments.
6. Government agencies such as Water Corporation were consulted regarding the recommended actions.

**\*\*REFER DISCLAIMER\*\***

7. The Wilson Inlet Management Strategy 2013- 2022 was presented to the City of Albany Environment and Reserves Committee on 7 March 2013 with a recommendation “that the City supports the objectives and outcomes of the Wilson Inlet Management Strategy 2013-2022 “.

**PUBLIC CONSULTATION / ENGAGEMENT**

8. The development of Wilson Inlet Management Strategy 2013-2022 involved extensive community consultation and public information forums.

**STATUTORY IMPLICATIONS**

9. There are no statutory implications. City Planning and Development will consider the document in the development of the Albany Local Planning Strategy.

**STRATEGIC IMPLICATIONS**

10. This item relates directly to the following elements of the City of Albany Strategic Plan 2011-2021.

***Key Focus Area***

*Lifestyle and Environment*

***Community Priority***

*Preservation of Albany’s uniqueness*

***Proposed Strategy.***

*There is no specific strategy in respect the Wilson Inlet Catchment.*

**POLICY IMPLICATIONS**

11. There are no known policy implications identified by reporting officer.

**RISK IDENTIFICATION & MITIGATION**

12. The risk identification and categorisation relies on the City’s Risk Management Framework.

<b>Risk</b>	<b>Likelihood</b>	<b>Consequence</b>	<b>Risk Analysis</b>	<b>Mitigation</b>
<i>Community and catchment groups not having a management strategy to support funding applications</i>	<i>Likely</i>	<i>Medium</i>	<i>Medium</i>	<i>Mitigation entirely dependent on Council.</i>
<i>Wilson Inlet catchment degrading further</i>	<i>Likely</i>	<i>Medium</i>	<i>Medium</i>	<i>Council endorses WIMS to provide support to neighbouring Shires and community groups working to have a sustainable future.</i>

**FINANCIAL IMPLICATIONS**

13. There are no known financial implications on the City of Albany from the WIMS or officer recommendation.

**LEGAL IMPLICATIONS**

14. There are no known legal obligations relating to the WIMS or officer recommendation.

**ALTERNATE OPTIONS**

15. Council can refuse to support the WIMS which will not be in keeping with neighbouring local governments who have already endorsed the WIMS.

**SUMMARY CONCLUSION**

16. The WIMS has been developed to provide direction to effectively manage the Wilson Inlet Catchment.
17. The previous Wilson Inlet Nutrient Reduction Action Plan 2003 produced some excellent outcomes for the community.
18. The main thrust of the strategy is to reduce nutrients entering Wilson Inlet.
19. The WIMS will provide a basis for supporting grant applications that community groups and Catchment Coordinators will apply for catchment works.
20. City of Albany Environment and Reserves Committee on 7 March 2013 recommended “that the City supports the objectives and outcomes of the Wilson Inlet Management Strategy 2013- 2022
21. By the City of Albany providing its support, it indicates willingness for integrated management of a catchment with neighbouring local governments.

<b>Consulted References</b>	:	Wilson Inlet Management Strategy 2013- 2022
<b>File Number (Name of Ward)</b>	:	EF1285541
<b>Previous Reference</b>	:	Presentation to Councillors and City Staff Environment and Reserves Committee on 7 March 2013