



- LEGEND**
- 01 POS 1 ADJACENT TO NEIGHBOURHOOD CENTRE WITH TURF KICK-ABOUT, DUAL-USE PATH, SHADE STRUCTURE WITH SEATING, SMALL NATURE-PLAY AREA, GARDEN BED PLANTING AND PROPOSED SHADE TREES
 - 02 POS 2 WITH OPPORTUNITIES FOR COMMUNITY GATHERING WITH SHADE STRUCTURE AND BENCH SEAT, FLEXIBLE USE TURF SPACE AND SMALL PLAY AREA
 - 03 POS 3 WITH MEANDERING EXPLORATORY PATH, BIO RETENTION DRAINAGE BASIN, FLEXIBLE USE TURF SPACE AND INTIMATE GATHERING NODES
 - 04 GREEN BUFFER TO PROVIDE PRIVACY FOR ADJACENT POS
 - 05 PROPOSED STREET TREES TO PROVIDE A COMFORTABLE MICRO-CLIMATE AND REDUCE THE HEAT-ISLAND EFFECT
 - 06 PROPOSED GARDEN BED PLANTING
 - 07 BIO RETENTION DRAINAGE BASIN WITH PROPOSED TREES
 - 08 MAIN PEDESTRIAN CONNECTOR ALONG ACTIVE STREET FRONTAGE WITH PROPOSED STREET TREES AND FIXED FURNITURE
 - 09 WAYFINDING AND CULTURAL INTERPRETATION NODE
 - 10 BIBBULMUN TRACK WITH WAYFINDING SIGNAGE
 - 11 EXPLORATORY PATH WITH DRAINAGE SWALE, SMALL GROUP GATHERING OPPORTUNITIES WITH SHADE STRUCTURE AND BENCH SEATS
 - 12 PUBLIC ACCESS WAY WITH MEANDERING PATH, INTIMATE GATHERING NODES WITH GARDEN BED AND TREE PLANTING TO PROVIDE VISUAL AND PHYSICAL CONNECTION THROUGHOUT THE SITE
 - 13 PEDESTRIAN PROMENADE WITH TIMBER BOARDWALK, INTEGRATED SEATING OPPORTUNITIES, GARDEN BED & TREE PLANTING, INTERPRETATIVE/WAYFINDING SIGNAGE, AND GATHERING NODES AT END OF PUBLIC ACCESS WAYS
 - 14 OPPORTUNITIES FOR ADDITIONAL POS ALONG HARBOUR WITH DUAL USE PATH, TURF KICK-ABOUT, COMMUNITY GATHERING SPACES WITH SHADE STRUCTURE, SEATING, PLAY AREA AND CONNECTION TO PEDESTRIAN PROMENADE & VIEWS ACROSS PRINCESS ROYAL HARBOUR AND BACK TOWARD ALBANY CITY CENTRE.
 - 15 RETAIN AND PROTECT EXISTING TREES
- EXTENT OF SETBACK WITHIN PROPOSED DEVELOPMENT SITES AT GROUND LEVEL. PRIVATE HARD AND SOFT LANDSCAPE TREATMENTS TO COMPLIMENT PUBLIC REALM WITHIN SETBACK DISTANCES SHOWN.
- * PROPOSED ACTIVITY NODE

NOTE :
REFER SITE SECTIONS & PERSPECTIVES FOR LEVEL INFORMATION

ALBANY, MT ELPHINSTONE WOOLSTORES SITE

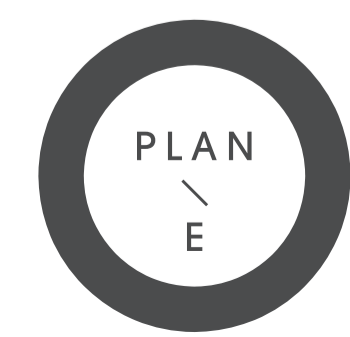
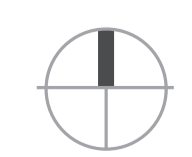
PREPARED FOR ROWE GROUP

LANDSCAPE MASTERPLAN
JULY 2023

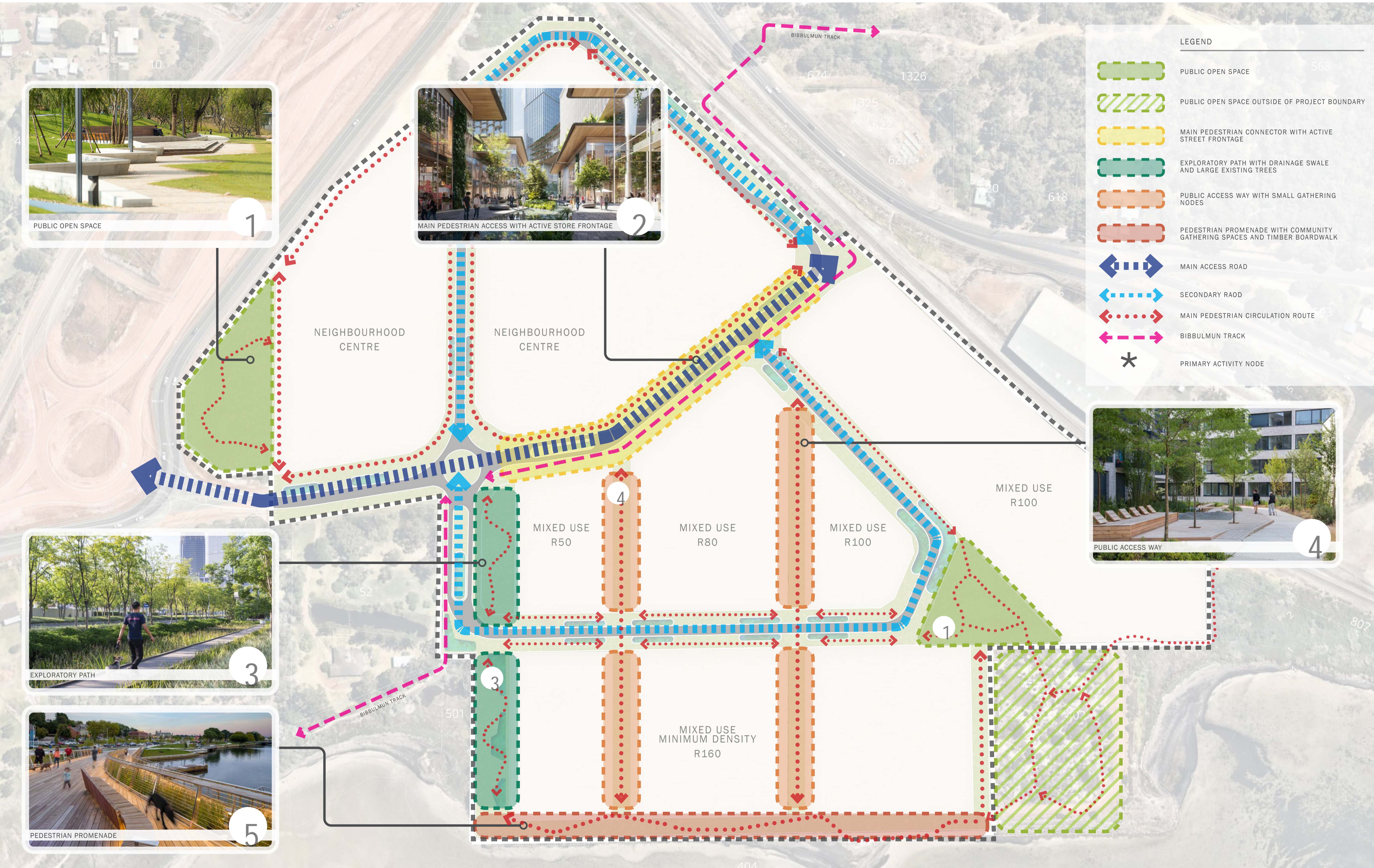
JOB NO. 2118001
1:1000 @ A1

C1.101
0 5 10 20 30 50m
REV C

COPYRIGHT THIS DOCUMENT IS AND SHALL REMAIN THE PROPERTY OF PLAN E



LANDSCAPE ARCHITECTS
LEVEL 1 278 RAILWAY PARADE WEST LEEDERVILLE 6007
T: (08) 9388 9566 E: mail@plane.com.au



ALBANY, MT ELPHINSTONE WOOLSTORES SITE

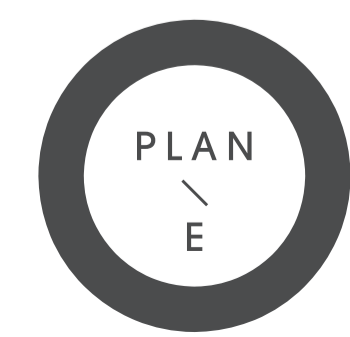
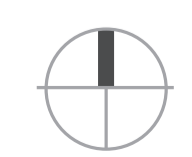
PREPARED FOR ROWE GROUP

LANDSCAPE MASTERPLAN
JULY 2023

JOB NO. 2118001
1:1000 @ A1

C1.102
0 5 10 20 30 50m
REV C

COPYRIGHT THIS DOCUMENT IS AND SHALL REMAIN THE PROPERTY OF PLAN E



LANDSCAPE ARCHITECTS
LEVEL 1 278 RAILWAY PARADE WEST LEEDERVILLE 6007
T: (08) 9388 9566 E: mail@plane.com.au



zone1:
PUBLIC OPEN SPACE



LANDSCAPE ARCHITECTS
LEVEL 1 278 RAILWAY PARADE WEST LEEDERVILLE 6007
T: (08) 9388 9566 E: mail@plane.com.au

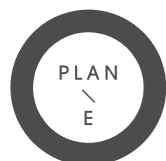
ALBANY, MT ELPHINSTONE WOOLSTORES SITE
PREPARED FOR ROWE GROUP
JULY 2023

C1.103
REV C
NTS





zone2:
MAIN PEDESTRIAN CONNECTOR

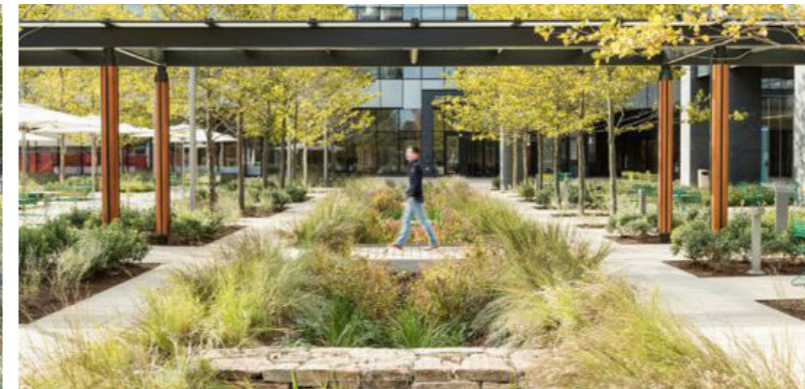
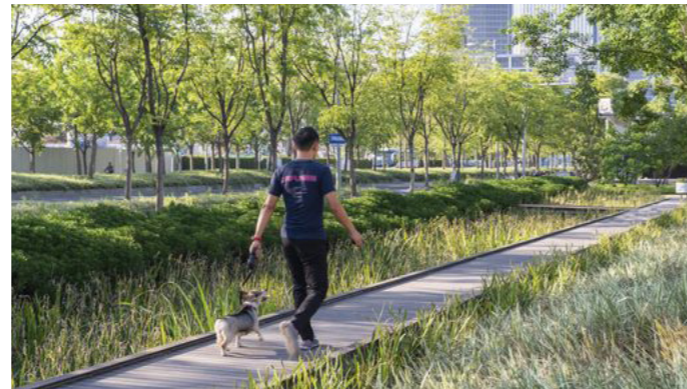


LANDSCAPE ARCHITECTS
LEVEL 1 278 RAILWAY PARADE WEST LEEDERVILLE 6007
T: (08) 9388 9566 E: mail@plane.com.au

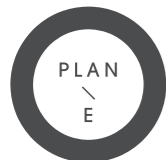
ALBANY, MT ELPHINSTONE WOOLSTORES SITE
PREPARED FOR ROWE GROUP
JULY 2023

C1.104
REV C
NTS





zone1:
EXPLORATORY PATH

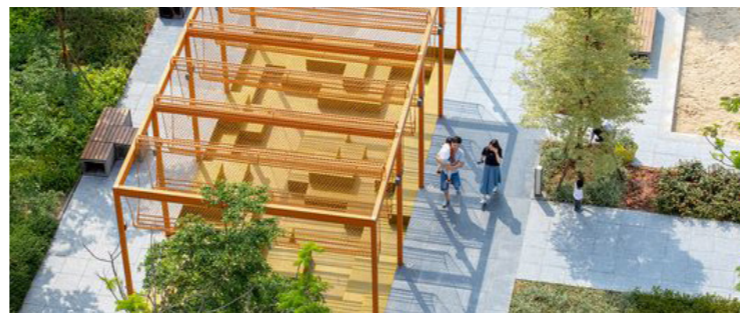
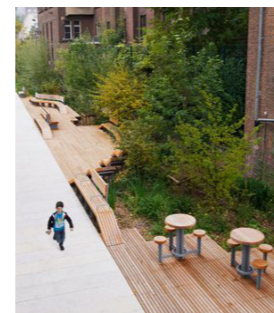
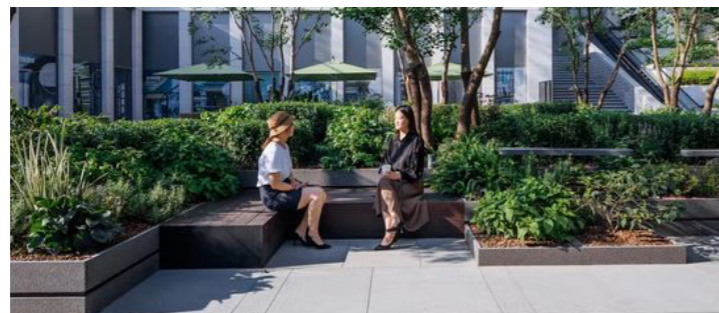
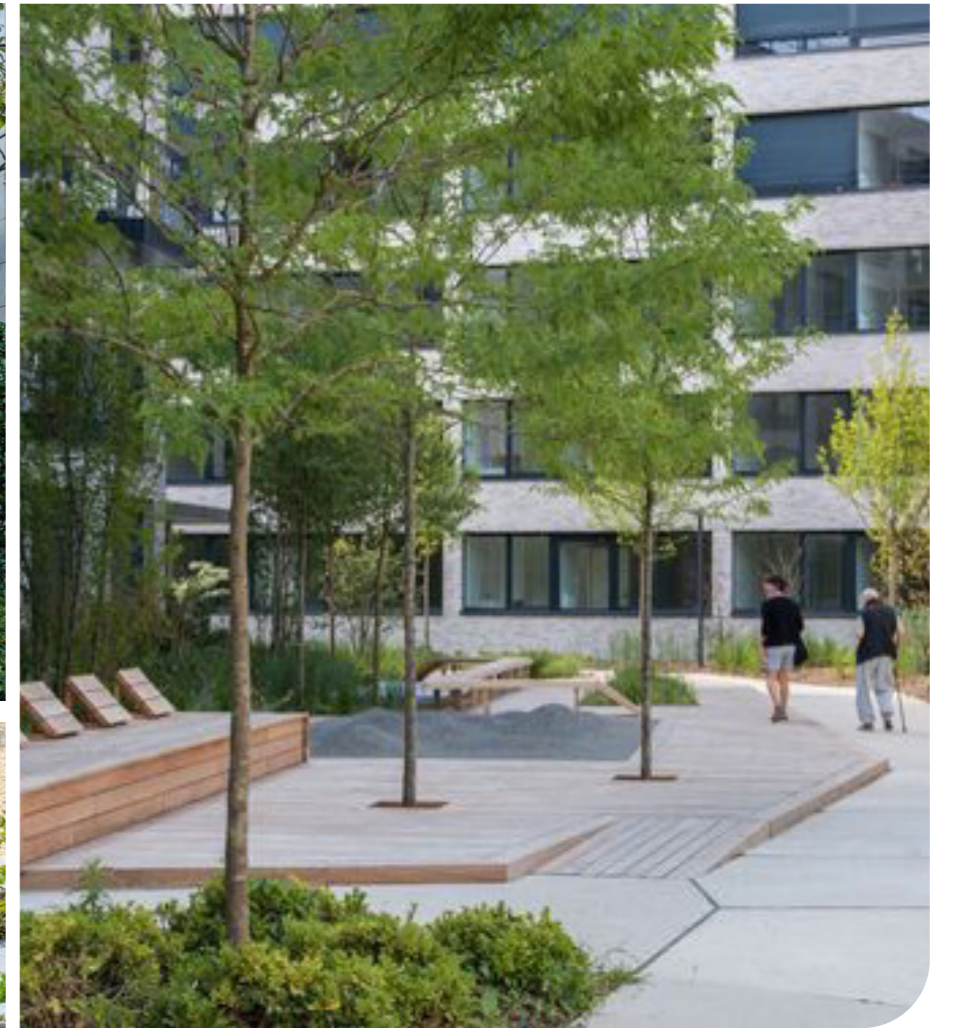


LANDSCAPE ARCHITECTS
LEVEL 1 278 RAILWAY PARADE WEST LEEDERVILLE 6007
T: (08) 9388 9566 E: mail@plane.com.au

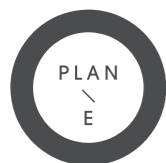
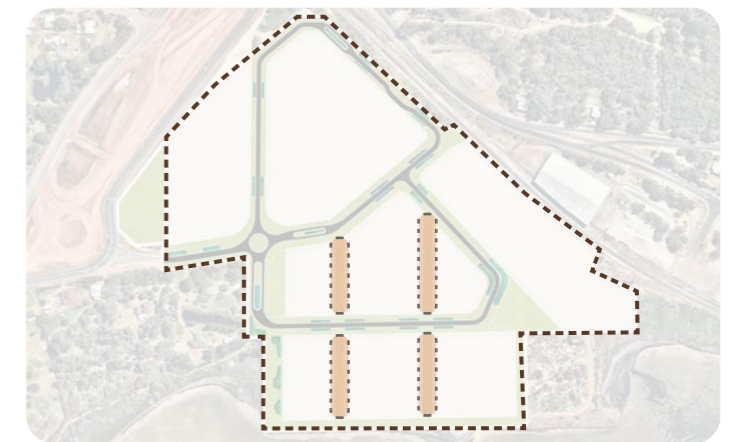
ALBANY, MT ELPHINSTONE WOOLSTORES SITE
PREPARED FOR ROWE GROUP
JULY 2023

C1.105
REV C
NTS





zone4:
PUBLIC ACCESS WAY

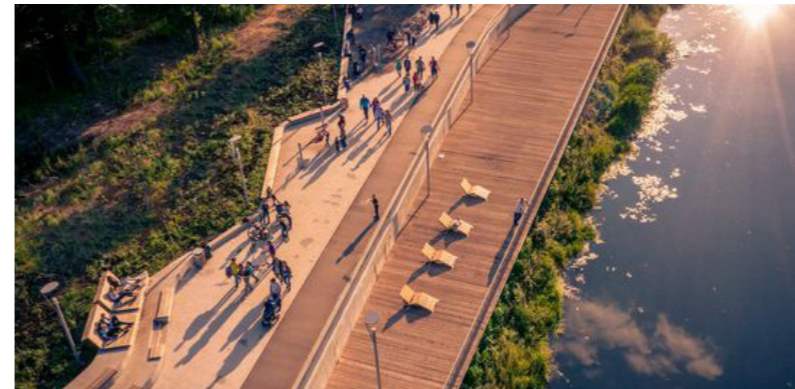
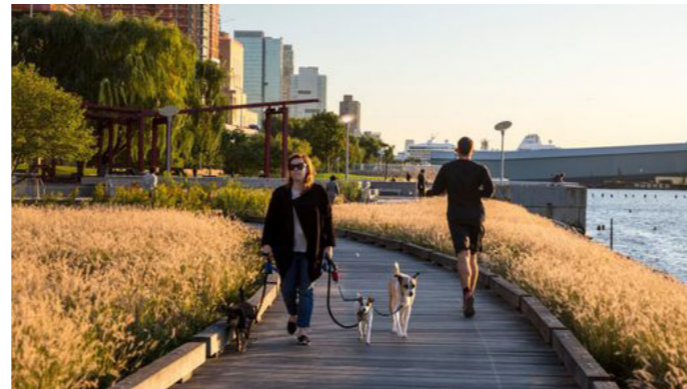
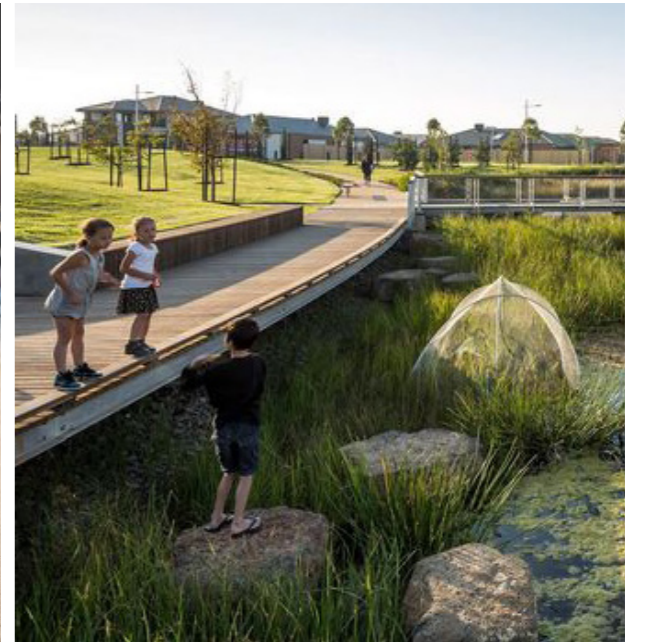
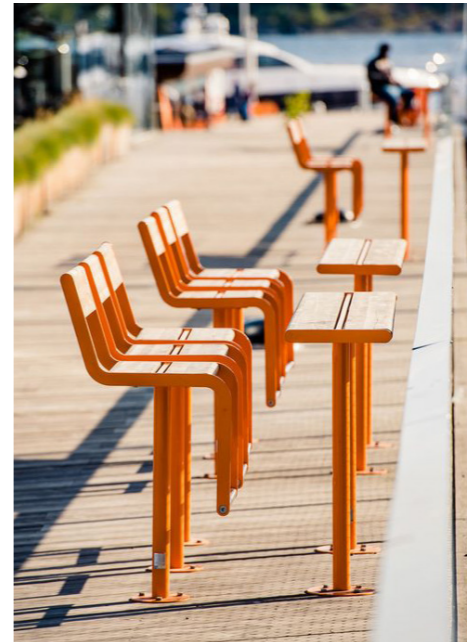


LANDSCAPE ARCHITECTS
LEVEL 1 278 RAILWAY PARADE WEST LEEDERVILLE 6007
T: (08) 9388 9566 E: mail@plane.com.au

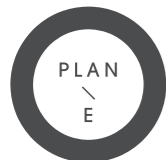
ALBANY, MT ELPHINSTONE WOOLSTORES SITE
PREPARED FOR ROWE GROUP
JULY 2023

C1.106
REV C
NTS





zone5:
PEDESTRIAN PROMENADE



LANDSCAPE ARCHITECTS
LEVEL 1 278 RAILWAY PARADE WEST LEEDERVILLE 6007
T: (08) 9388 9566 E: mail@plane.com.au

ALBANY, MT ELPHINSTONE WOOLSTORES SITE
PREPARED FOR ROWE GROUP
JULY 2023

C1.107
REV C
NTS

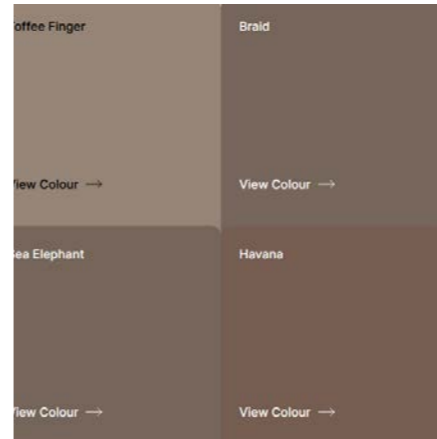




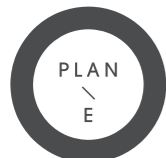
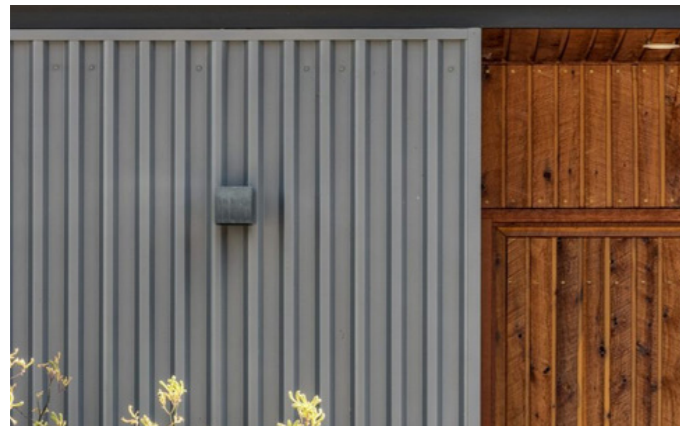
Bowral Highlands

Available Nationally

Using clay sourced from the Southern Highlands of New South Wales, these tactile creations are blended by our master brickmakers to spectacular effect. Bowral Highlands offer shades that morph from light to dark, with natural seams of colour within each brick. These expressive veins result in a crafted brick unlike any other; the perfect balance of form, function and enduring class.



PTX ARCHITECTS (ALBANY)



LANDSCAPE ARCHITECTS
LEVEL 1 278 RAILWAY PARADE WEST LEEDERVILLE 6007
T: (08) 9388 9566 E: mail@plane.com.au

ALBANY, MT ELPHINSTONE WOOLSTORES SITE
PREPARED FOR ROWE GROUP
JULY 2023

C1.108
REV C
NTS



Naturally inspired and evocative, these earthy mid tones pay tribute to our country's quintessential palette and blend beautifully with the landscape. At once warm and welcoming, each colour layer's well with other naturally inspired building materials to realise a distinctively Australian aesthetic.

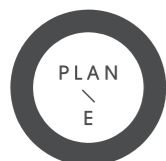
• COLOURBOND® Blue Windspray™ in a Classic Finish | Basalt™ in a Matte Finish

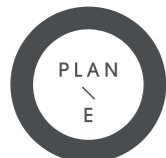


Dieskau	Silkwort	Flooded Gum
View Colour →	View Colour →	View Colour →



COX ARCHITECTS





LANDSCAPE ARCHITECTS
LEVEL 1 278 RAILWAY PARADE WEST LEEDERVILLE 6007
T: (08) 9388 9566 E: mail@plane.com.au

ALBANY, MT ELPHINSTONE WOOLSTORES SITE
PREPARED FOR ROWE GROUP
JULY 2023

C1.1010
REV C
NTS

INSPIRATION



PUBLIC REALM UPGRADES TO ENHANCE VIEWS OF WATER FRONT



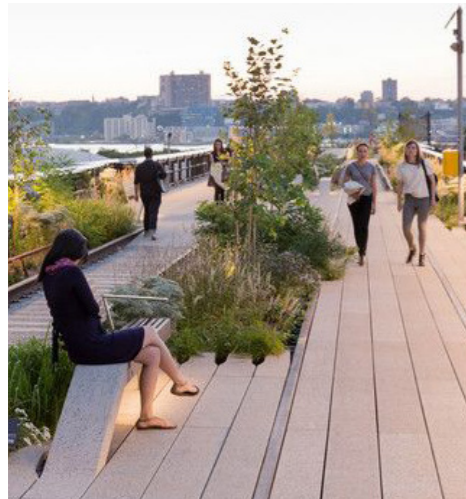
SITE SENSITIVE DIRECTIONAL AND INTERPRETIVE SIGNAGE OR ARTWORK



MODERN SEMI INDUSTRIAL ARCHITECTURE



OPPORTUNITIES FOR TOURISM (LOCAL OR REGIONAL)



PUBLIC PROMENADE WITH SHADE AND SHELTER



ENVIRONMENTALLY CONSCIOUS OF SURROUNDING LANDSCAPE VALUES



CONNECTION TO HARBOUR, PORT AND HISTORY OF ALBANY



NEW PUBLIC ACCESS TO THE SITE

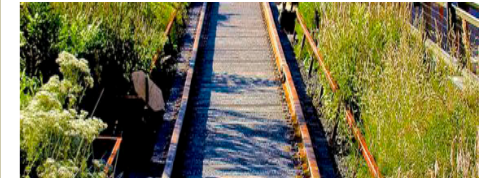
LOCALLY SOURCED MATERIALS



LOCALLY SOURCED TIMBER



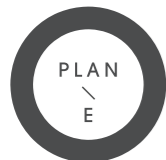
POTENTIAL RE-USE OF DEMOLITION SITE WASTE



LOCALLY SOURCED GRANITE



POSSIBLE INTEGRATION OF LOCAL SHELL GRIT OR GRAVELS



PUBLIC AMENITY



CONNECTION AND ACCESSIBILITY KEY



NATURE OR BESPOKE PLAY OPPORTUNITIES

STREETSCAPES



WATER SENSITIVE URBAN DESIGN



LOCALLY ENDEMIC & NATIVE SPECIES



SOUTH COASTAL BANKSIAS



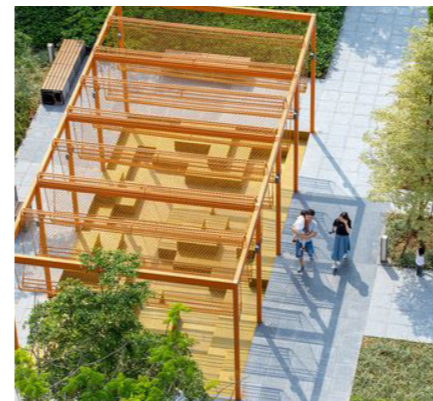
NOD TO INDUSTRIAL FORMS



CONNECTION AND VIEWS OF HARBOUR



SHADE AND REST NODES



SEASONAL COLOUR



SCULPTURAL ELEMENTS



TREE RETENTION WHERE POSSIBLE



WATERWISE AND SITE SENSITIVE

