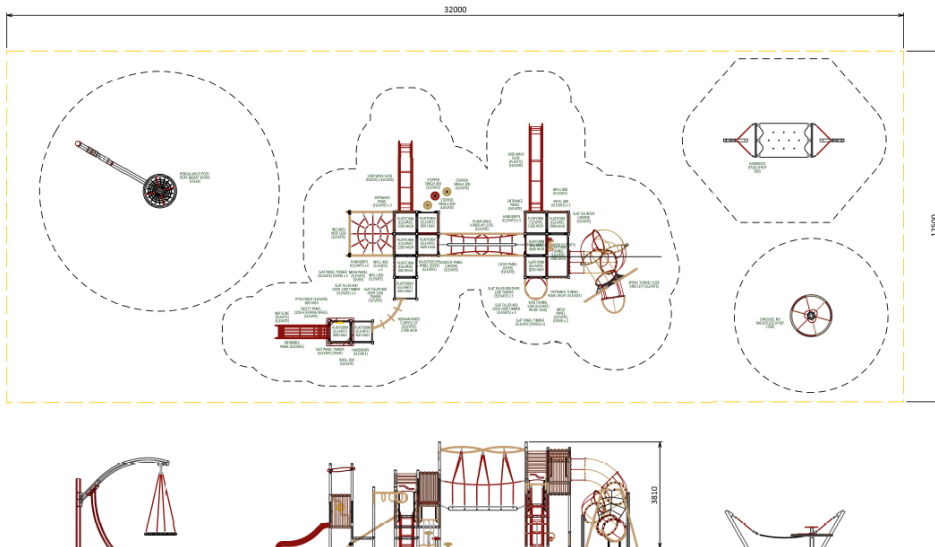


Option 1



MINIMUM SPECIFICATIONS

UPRIGHTS
75mmx75mm Aluminium (3.5mm wall thickness). Powder coated.
Strength: Meets the strength requirements of section 4.2.2 of AS 4685. S1

POWDER COATING
All steel components have a lead and TBC free, baked polyester powder coat finish.
Our finish of 80-120 microns greatly exceeds the required Australian Standard AS/NZS 1530.0.01 of 40-100 microns.

PLATFORMS AND PLATFORM INNELS
Fully reinforced, Marine Grade Aluminium (5005-H34). Minimum thickness 3mm.

STEEL PLATE COMPONENTS
Galvanneal Steel - Galvalume plus, meeting the specifications C350.0.
Stainless Steel - 304 and 316 Grade Stainless Steel.

PLASTIC PLATE COMPONENTS
Roto-moulded - Polyethylene (UV stabilised, rating 8) with 930 density. Thickness 3mm.

SLIDES
Roto-moulded polyethylene (UV stabilised, rating 8) with 930 density.
Stainless steel grades T304 & T316.
Calculated stress (BSI).

PANELS
Fully reinforced, commercial grade aluminium (5005-H34). Minimum thickness 3mm. Powder coated finish.

TUNNELS
Galvanneal steel with powder-coated finish.
Roto-moulded polyethylene (UV stabilised, rating 8) with 930 density.
17mm urethane high density polyethylene (rounded designs).

CHAINS
3mm steel link stainless steel (316).

ROPE
Rope Diameter - 16mm and 18mm.
Rope Covering - Nylon.
Rope Core - Polypropylene.
Steel Reinforcement - 6 x galvanised wire strand 1570N/mm2.
Hydraulically pressed aluminium terminals.
316 stainless steel hardware.
Plastic connectors - Nylon.

NETS
All bolts, fixtures and fittings meet Australian Standard AS 1112 and AS 1590.
Pan thread triangular recess with cone shape.
Case hardened to 450 HV's minimum.
Metric and S sections and yellow discolourage.
Size M10 x 20 x 1.5 thread. Also available as T302 stainless steel.

ROPS
Available in the following materials:
1. Roto-moulded polyethylene (UV stabilised, rating 8) with 930 density.
2. Zinc-alume steel with powder-coat finish.
3. Marine Grade Laser cut and heat treated Aluminium sheet (5005-H34). Minimum thickness 3mm. Powder coated finish.

STEPS & STAIRS
Available in the following materials:
1. Aluminium (5005-H34) with powder coated finish.
2. Galvanneal steel with powder coated finish.
3. Roto-moulded polyethylene (UV stabilised, rating 8) with 930 density.

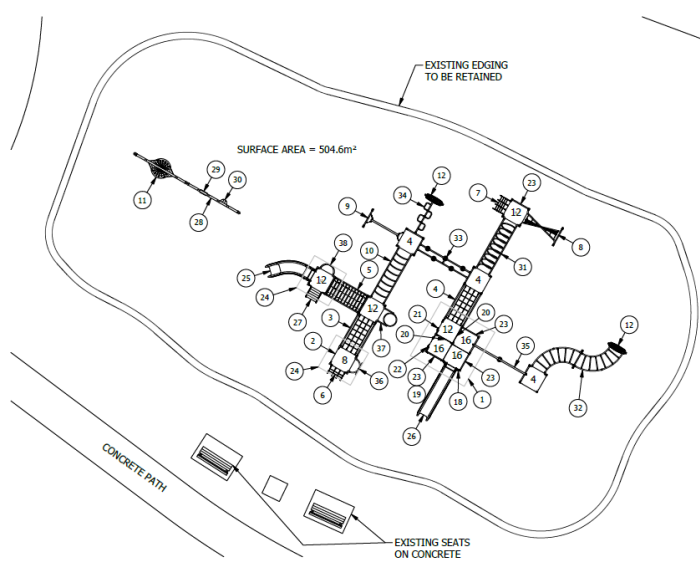
SPINNING EQUIPMENT
Available in the following materials:
1. Cold Aluminium and hot-dipped steel.
2. Tri-laminar high density polyethylene. Springs are rust protected. Firing plates are stainless steel. All aluminium, plates and springs have a powder-coated finish.

TIMBER
Type: Meranti of the Shorea species - A light hardwood.
Durable and resistant to insect attacks.
Metric 8mm x 10mm (locking) and weather resistant timber stain.
All Forpark timber is responsibly sourced through a FSC certified supplier.

ELEVATION



Option 2



EQUIPMENT INVENTORY			
ITEM	DESCRIPTION	QTY	FHF (mm)
1	PS Quad Corrugated Flat Roof	1	N/A
2	PS Ladder Vertical 800 with D Grips 850	1	800
3	PS Cable Rope Net Climber 2000 x 400 inc	1	1200
4	PS Cable Rope Net Climber 2000 x 800 inc	1	1200
5	PS Eco-wood Sway Bridge 2000 - handrails	1	1200
6	PS Cable Rope Net Climber 800	1	800
7	PS Cable Rope Net Climber 1200	1	1200
8	PS Twister Net 2000 - Pfm/Rung	1	1600
9	PS Balance Beam Suspended 2000 - 1 Rung	1	250
10	PS Half Ring Climber 3000 x 800 inc	1	1705
11	Birds Nest Swing Seat - MG	1	N/A
12	PS-PR Landing Step HDPE	2	400
13	PS Alum Pcoat Platform - Braced	4	1200
14	PS Alum Pcoat Platform - Braced	3	400
15	PS Alum Pcoat Platform - Braced	1	1600
16	PS Alum Pcoat Platform - Braced	1	800
17	PS Alum Add On Platform - Braced	2	1600
18	PS Shop Front Geo	1	N/A
19	PS House Panel HDPE	1	N/A
20	PS Sqr Pfm Infill Alum 400 with Std H'grips	2	N/A
21	PS Contoured Rock Wall 1200	1	1200
22	PS Contoured Rock Wall 1600	1	1600
23	PS Holes Barrier 975H	4	N/A
24	PS Corrugated Flat Roof	2	N/A
25	PS 1200 Pis Curved Slide	1	1200/1000
26	PS 1600 Pis Big Dipper Slide	1	1600/1000
27	PS Eco-wood Steps 1200 with Geo sides	1	1200
28	Big Leg Swing Adult (2 Bay Double/Birds Nest - Loosefill 1AS)	1	1460
29	Strap Swing Seat (MG)	1	N/A
30	Infant Swing Seat (MG)	1	N/A
31	PS Twist Tunnel (3000 x 800 inc)	1	1930
32	PS Monkey Bar S Junior	1	2085
33	PS Pommel Walk 3000	1	400
34	PS Switchback Bars 2000	1	2085
35	PS Inclined Tarzan Poles - 3000	1	1600
36	PS BT Pole 800 Flat	1	900
37	PS Twist Climber 1200	1	1440
38	PS Sking Pole 1200	1	1200

Site Layout is indicative only & subject to change
This design is confidential & subject to Copyright.

PLAYGROUND DESIGN COMPLIANT
WITH AS 4685:2021

Scale Bar 1:150@A3 (metres) 0 5 10



Design Plan

Design No: **D64381-2**

Drawn by: **S.J.**

Date drawn: **29/06/2021**



Option 3

CENTENNIAL PARK WEST PLAYGROUND - OPTION 3

EQUIPMENT SCHEDULE

CLIMB

6 Ivo Multiplay Unit (J2535M)

2 Hip Hop Swing (J2410)

12 Hammock Swing (J443)

13 Swing (J433)

SAND PLAY

9 The Sand Digger (J5014)

3 Stomp the Seahorse Springer (J854)

SPRING

4 Sidney the Snake Springer (J820)

5 Daisy Cow Springer (J844)

SPIN

1 Speed Gyro (J2400)

MUSIC PLAY

10 Penta Post (PPRAINPOSG)

7 Tubophone (J5410)

11 Diabolo Baby Multiplay (Z20-3847)

BALANCE

8 Balancing Course (J5407-M)

Drawing No: 055330_302 | EQUIPMENT SCHEDULE
 Date: 01/07/2021
 Drawn: RG
 Proludic Pty Ltd intellectual property. Any reproduction, even partial, is prohibited. All rights reserved.

Proludic Pty Ltd | www.proludic.com.au | info@proludic.com.au | 1300 800 181

CENTENNIAL PARK WEST PLAYGROUND - OPTION 3

LAYOUT PLAN

Rubber Safety Surfacing (suggestive only - by others)

Existing Concrete Edge

Existing Sand Surfacing

Existing Seating

Rubber Safety Surfacing (suggestive only - by others)

LEGEND

--- IMPACT AREA AS4685:2014

--- FREE SPACE

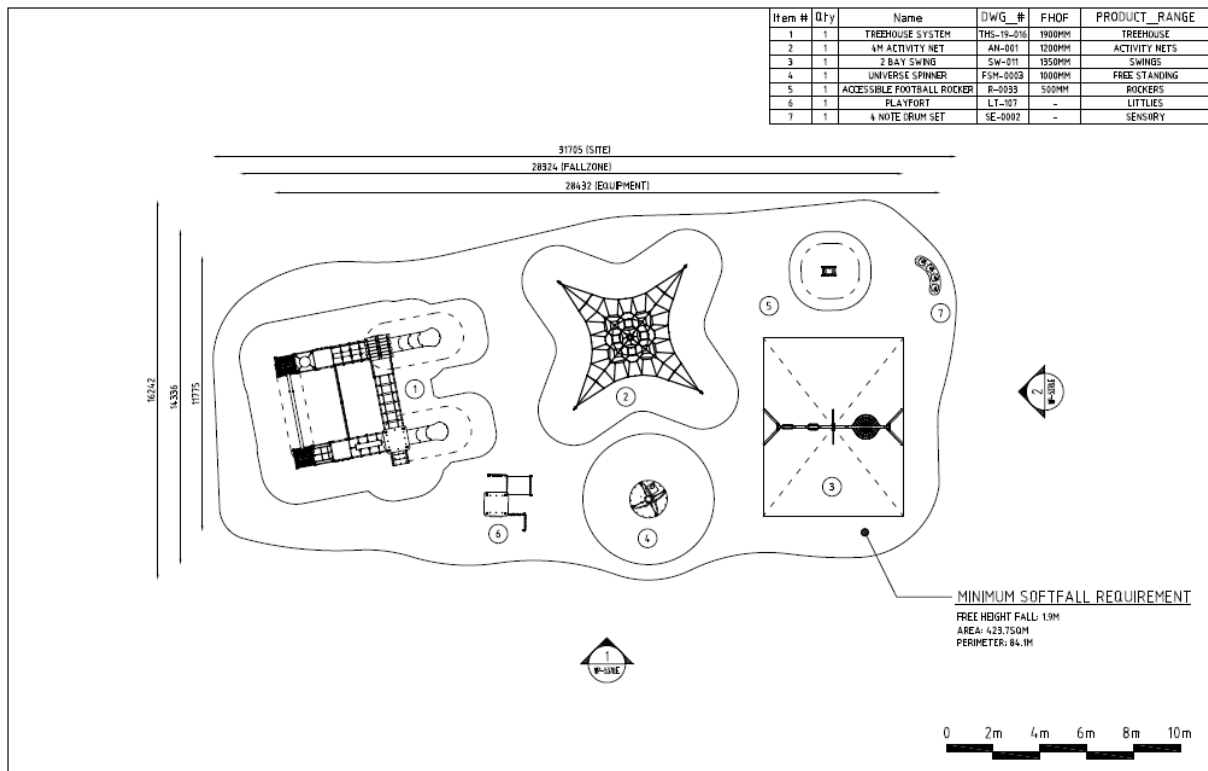
SCALE 1:100 @ A5

Refer EQUIPMENT SCHEDULE for play elements

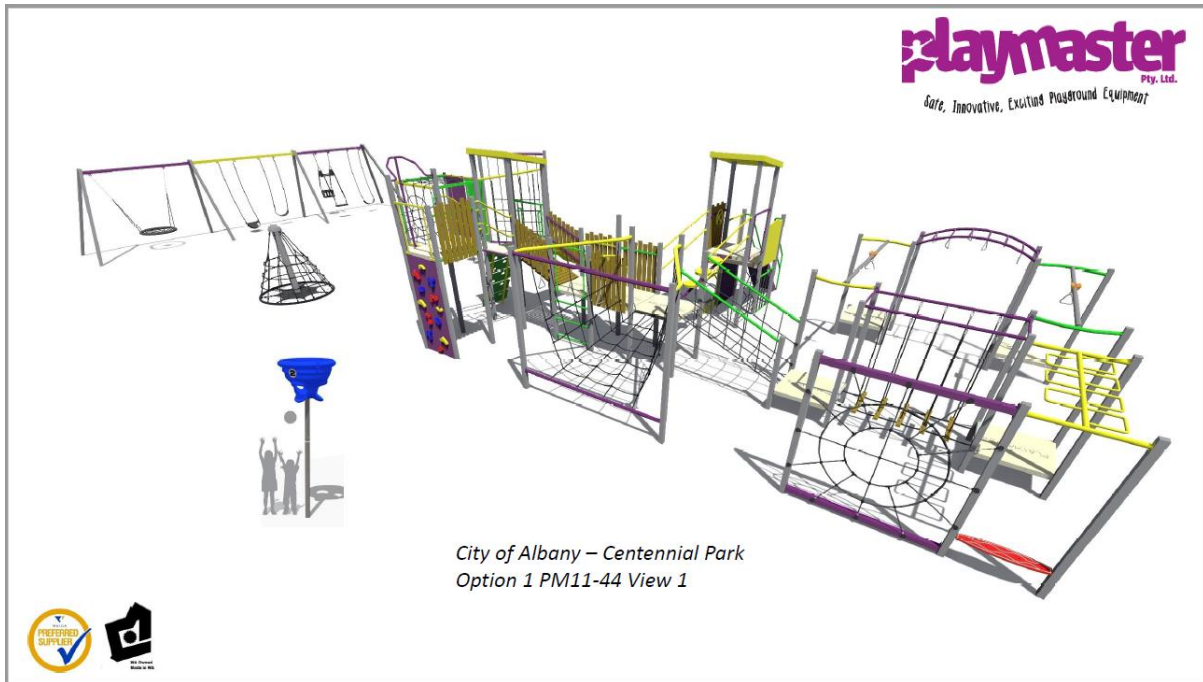
Drawing No: 055330_301 | LAYOUT PLAN
 Date: 01/07/2021
 Drawn: RG
 Proludic Pty Ltd intellectual property. Any reproduction, even partial, is prohibited. All rights reserved.

Proludic Pty Ltd | www.proludic.com.au | info@proludic.com.au | 1300 800 181

Option 4



Option 5



playmaster
Pty. Ltd.
Safe, Innovative, Exciting Playground Equipment

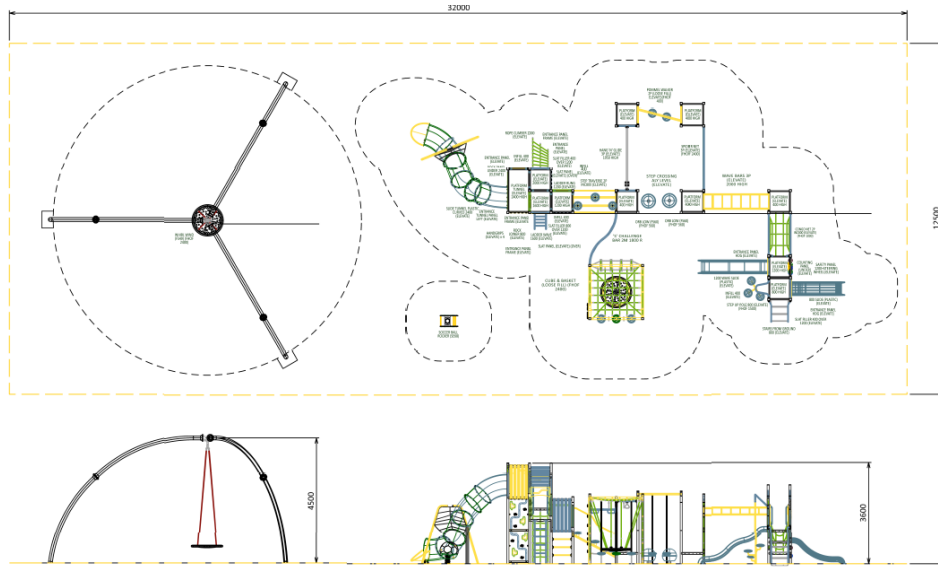
City of Albany – Centennial Park Option 1 PM11-44

COMPONENT KEY	
NUMBER	COMPONENT
1	SPIDER CLIMBER
2	WEB BALL
3	MONKEY CROSS
4	FLYING FOX
5	SPINNY WHEEL MONKEY BRIDGE
6	WEB PANEL
7	COMBINED CLIMBER
8	BACK SCRAPER
9	WEB CLIMBER
10	PLASTIC TELESCOPE PANEL
11	TELESCOPE
12	ROCKWALL
13	TOWER IN A BRAW
14	SAFEGUARD PANEL
15	SAFETY STAIRS
16	SAFETY GUARD RAIL PANEL
17	SAFETY TELESCOPE PANEL
18	LOGWALL
19	PLASTIC CARVED HAMP
20	SAUCERWAVE SLIDE
21	ARCADIAN CLIMBER
22	CARABO CLIMBER
23	SPIDERWALK
24	BRIDGE WREST DUNGEON
25	PODSHOT
26	ROTORNET
27	3WAY COMBINATION SWING
28	SAFETY CUMBER
29	SPINNY CLIMB
30	SEESAW
31	POWELL BALL
32	TRAVELER NET

Colour Palette

Dark Violet
 Golden Yellow
 Mint Green
 APO Grey

Option 6



ELEVATE SPECIFICATIONS

UPRIGHTS
20mm 20mm Aluminium (3.0mm wall thickness). Powder coated. Strength: Must be the strength requirements of section 4.2.2 of AS 4588-2014.

POWERS COATING
All steel components have a lead and TiO₂ free, baked polyester powder coat finish. The strength requirements of section 4.2.2 of AS 4588-2014.

POWERS COATING
All steel components have a lead and TiO₂ free, baked polyester powder coat finish. The strength requirements of section 4.2.2 of AS 4588-2014.

PLATFORMS AND PLATFORM INBILLS
Fully reinforced, Marine Grade Aluminium (5005-H34). Minimum thickness 8mm.

FIXED PLAY COMPONENTS
Galvanneal steel - Galvalume plus, meeting the specifications C350.0. Stainless steel - 304 and 316 Grade Stainless steel.

PLASTIC PLAY COMPONENTS
Fully reinforced - Polyethylene (UV stabilised, rating R) with 930 density. Smooth as moulded.

FUNCTION Moulded - 50% Glass Filled Nylon.

SLIDES
Non-moulded polyethylene (UV stabilised, Rating R) with 930 density.

Stainless steel grade T304 & T316.

PANELS
Fully reinforced, commercial grade aluminium (5005-H34). Minimum thickness 8mm. Powder coated finish.

TUNNELS
Fully reinforced, Commercial Grade Aluminium (5005-H34). Minimum thickness 8mm. Powder coated finish.

ROPS
Rope Diameter - 16mm and 18mm.
Rope Covering - Nylon.
Rope Core - Polyethylene.
Steel reinforcement - 8mm galvanized wire strand 1570N/mm².
Hydraulically pressed aluminium terminals.
Stainless steel hardware.
Rope connectors - Nylon.

NETS
All bolts, fixtures and fittings meet Australian Standard AS 1112 and AS 1160.
Full length.
Case hardened to 450 HV_{0.05} minor min.
min. case 5 microns and yellow 65 Shore.
300 x 100 x 20 x 1.5 Thread. Also available as T302 stainless steel.

ROPE
Available in the following materials:
1. 20mm diameter stainless steel with powder coat finish.
2. 20mm diameter stainless steel with powder coat finish.
3. Marine Grade Laser cut and Round Aluminium sheet (5005-H34). Minimum thickness 8mm. Powder coated finish.

STEEL & STAINLESS
Available in the following materials:
1. Aluminium (5005-H34) with powder coated finish.
2. Galvanized steel with powder coated finish.
3. Non-moulded polyethylene (UV stabilised, rating R) with 930 density.

SPRINGS EQUIPMENT
Springs available in the following materials:
1. Galvanized steel.
2. Cold laminated high density polyethylene. Springs are rust protected. Fungus plates zinc plated. All aluminium plates and springs have a powder coated finish.

TIMBER
Light. Moisture at the time of use is < 18%. Light hardwood. Durable and resistant to insect attacks. Cured with a long lasting UV and weather resistant timber stain. All Forpark timber is responsibly sourced through a FSC certified supplier.

ELEVATION

LEGEND

--- PROPOSED FOOTPRINT USING SAND SOFTFALL

--- MINIMUM FALLZONE REQUIREMENT



Option 7

CENTENNIAL PARK WEST PLAYGROUND - OPTION 1

EQUIPMENT SCHEDULE



SWING



1 Swing Set (J433)

SAND PLAY



2 The Sand Digger (J5014)

SPRING



2 Petra the Puppy Springer (J855-30)

SPRING



3 Pendulum Swing (J444)

CLIMB



3 Harmony Bell (BELLFMAXXG)

CLIMB



7 Climbing Hut (J254)

SPIN



6 Speed Gyro Carousel (J2400)

SLIDE



4 Kanope Multiplay Unit (J5608)

ZIP-LINE




9 Metal Cableway (J514)

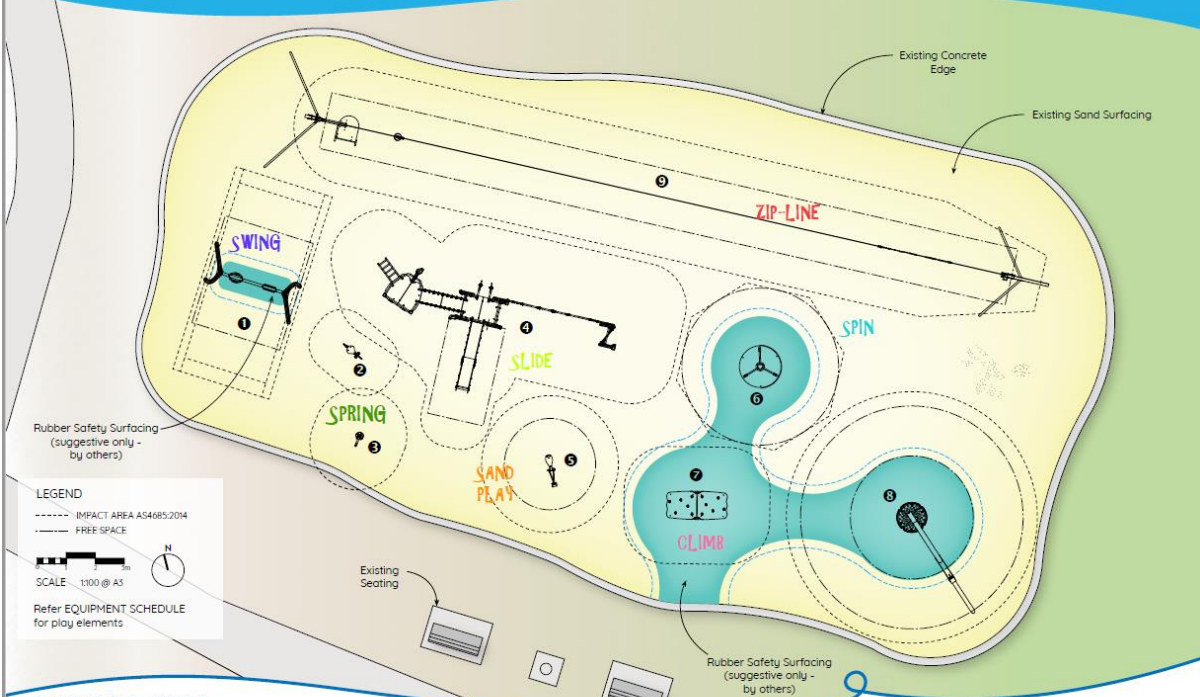
Drawing No: 055330_102 | EQUIPMENT SCHEDULE
Date: 01.07.2021
Drawn: RG
Proludic Pty Ltd intellectual property. Any reproduction, even partial, is prohibited. All rights reserved.

Proludic Pty Ltd | www.proludic.com.au | info@proludic.com.au | 1300 800 181

CENTENNIAL PARK WEST PLAYGROUND - OPTION 1

LAYOUT PLAN





Existing Concrete Edge

Existing Sand Surfacing

Rubber Safety Surfacing (suggestive only - by others)

LEGEND

----- IMPACT AREA AS4685:2014

----- FREE SPACE

SCALE: 1:100 @ A3

Refer EQUIPMENT SCHEDULE for play elements

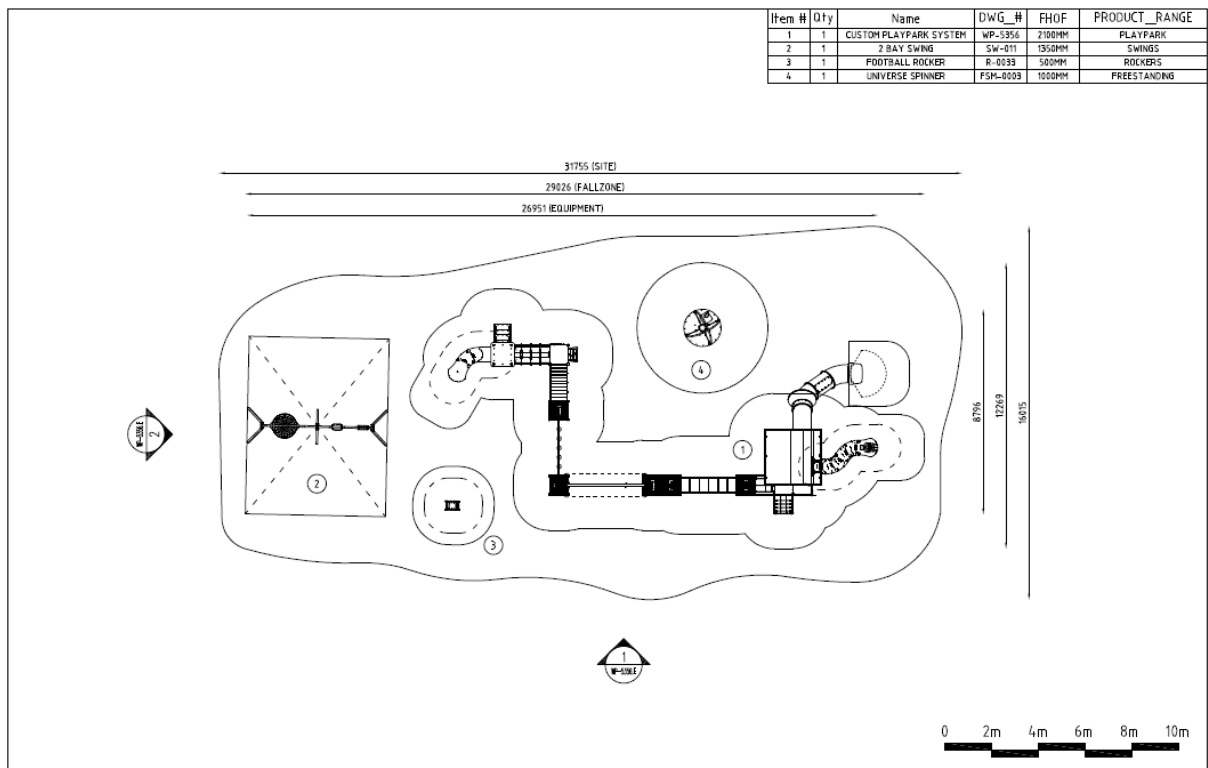
Existing Seating

Rubber Safety Surfacing (suggestive only - by others)

Drawing No: 055330_101 | LAYOUT PLAN
Date: 01.07.2021
Drawn: RG
Proludic Pty Ltd intellectual property. Any reproduction, even partial, is prohibited. All rights reserved.

Proludic Pty Ltd | www.proludic.com.au | info@proludic.com.au | 1300 800 181

Option 8



Option 9

playmaster
Pty. Ltd.
Safe, Innovative, Exciting Playground Equipment

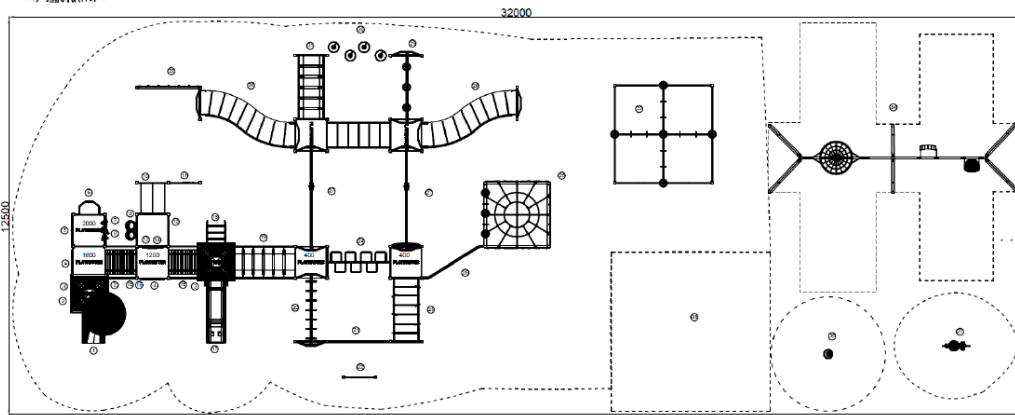


City of Albany – Centennial Park
Option 3 PM7-302 View 1



playmaster
Pty. Ltd.
Safe, Innovative, Exciting Playground Equipment

City of Albany – Centennial Park Option 3 PM7-302

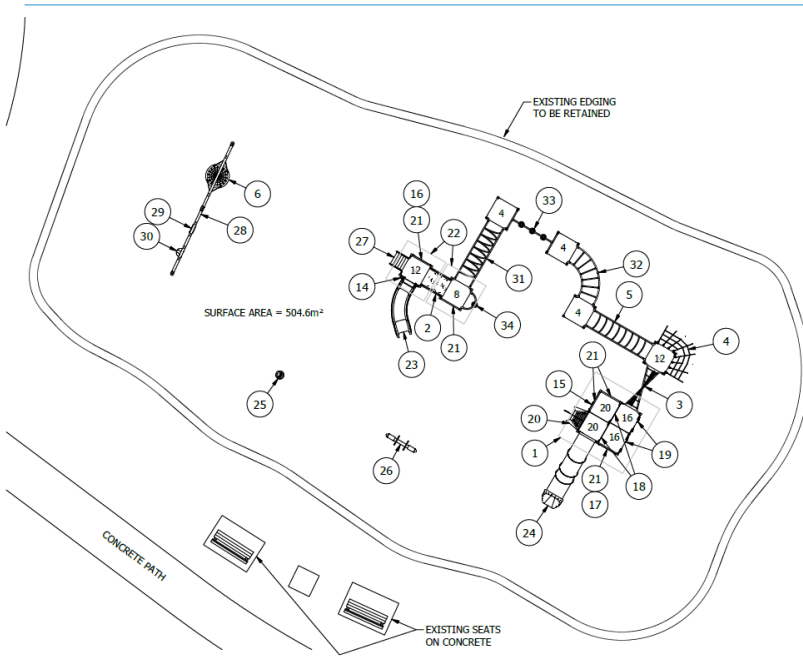


Colour Palette



NUMBER	COMPONENT
1	ORANGE SLIDE
2	ORANGE TAIL PANEL
3	SUBST. ROOF
4	WOOD PANEL
5	WEB CLIMBER
6	TRIP POLE
7	ROOFING AND BRACING
8	TRUSS/ROOF PANEL
9	WOOD PANEL
10	ORANGE TRUSS/ROOF PANEL
11	ALUMINUM/CLIMBER
12	WOOD PANEL
13	TRUSS/ROOF PANEL
14	ENTERING PANEL
15	ORANGE ROOF
16	ORANGE PANEL
17	SINGLE SLIDE SLIDE
18	CLIMBER FRAME
19	WALK THE PLANK
20	CLIMBER FRAME
21	BARREL BALL
22	TRUSS PANEL
23	WOOD/CLIMBER FRAME
24	SPRING CLIMBER
25	TRUSSING NET
26	SPRING CLIMBER
27	TRUSSING NET
28	TRUSSING NET
29	TRUSSING NET
30	TRUSSING NET
31	TRUSSING NET
32	TRUSSING NET
33	TRUSSING NET
34	TRUSSING NET
35	TRUSSING NET
36	TRUSSING NET
37	TRUSSING NET

Option 10



EQUIPMENT INVENTORY			
ITEM	DESCRIPTION	QTY	F/H (mm)
1	PS Quad Corrugated Flat Roof	1	N/A
2	PS Humpty Climber 1000 x 400 Inc - with Handrails	1	1200
3	PS Twister Net 2000 - 1600 Pfm / 1200 Pfm	1	1600
4	PS Cascade Rope Net 1200	1	1200
5	PS Half Ring Climber 3000 x 800 inc	1	1705
6	Birds Nest Swing Seat - MG	1	N/A
7	PS Alum Pcoat Platform - Braced	1	2000
8	PS Alum Pcoat Platform - Braced	2	1200
9	PS Alum Pcoat Platform - Braced	3	400
10	PS Alum Pcoat Platform - Braced	1	1600
11	PS Alum Pcoat Platform - Braced	1	800
12	PS Alum Add On Platform - Braced	1	2000
13	PS Alum Add On Platform - Braced	1	1600
14	PS Shop Front Geo	1	N/A
15	PS Let's Fly Panel HDPE	1	N/A
16	PS Cruiser Full Panel HDPE - double sided	1	N/A
17	PS House Panel HDPE	1	N/A
18	PS Sqr Pfm Infill Alum 400 with Std H/grips	2	N/A
19	PS Contoured Rock Wall 1600	2	1600
20	PS Scaling Wall 2000	1	2000
21	PS Holes Barrier 975H	5	N/A
22	PS Corrugated Flat Roof	2	N/A
23	PS 1200 PIs Curved Slide	1	1200/1000
24	PS 2000 Tube Slide	1	1000
25	Whirly Gig Spinner - S Shape	1	250
26	Dual Rider	1	490
27	PS Eco-wood Steps 1200 with Geo sides	1	1200
28	Big Leg Swing Adult (2 Bay Double/Birds Nest - Loosefill IAS)	1	1460
29	Strap Swing Seat (MG)	1	N/A
30	Infant Swing Seat (MG)	1	N/A
31	PS Twist Tunnel (3000 x 400 inc)	1	1355
32	PS Monkey Bar 90D Curved Senior	1	2085
33	PS Pommel Walk 2000	1	400
34	PS Pommel Pole Climber 800	1	800

Site Layout is indicative only & subject to change.
This design is confidential & subject to Copyright.

PLAYGROUND DESIGN COMPLIANT
WITH AS 4685:2021

Scale Bar 1:125@A3 (metres) 0 5 10



Design Plan

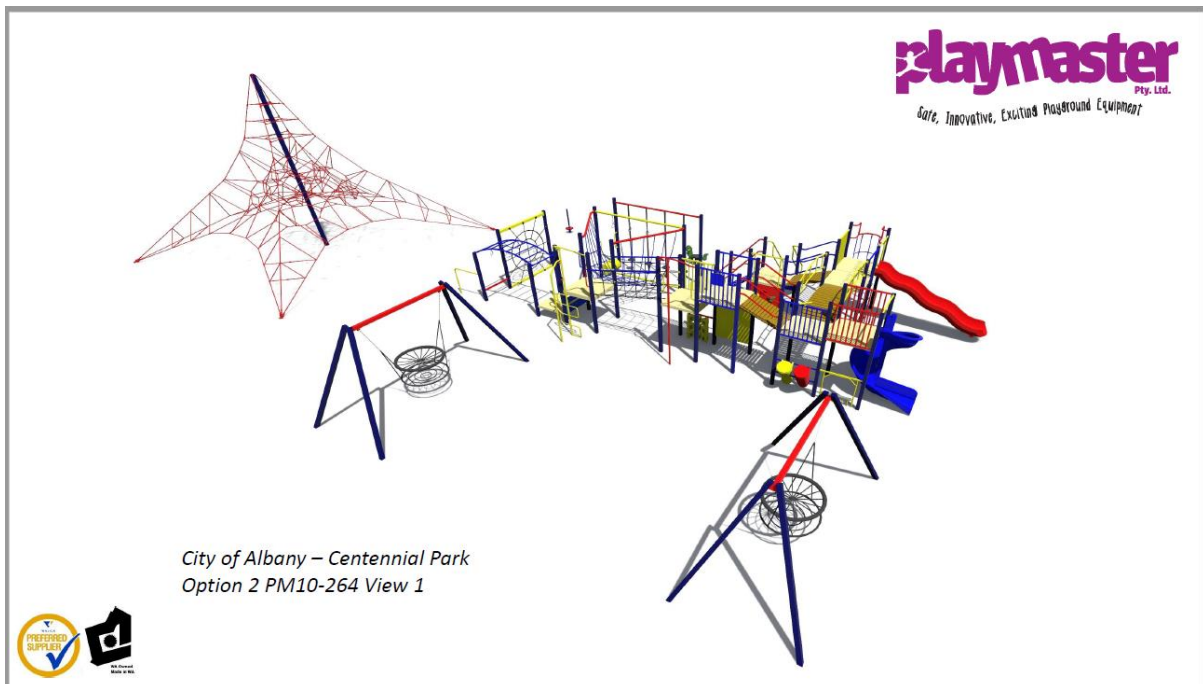
Design No: **D64381-1**


Drawn by: **S.J.**

Date drawn: **29/06/2021**



Option 11





playmaster
Pty. Ltd.
Safe, Innovative, Exciting Playground Equipment

City of Albany – Centennial Park Option 2 PM10-264

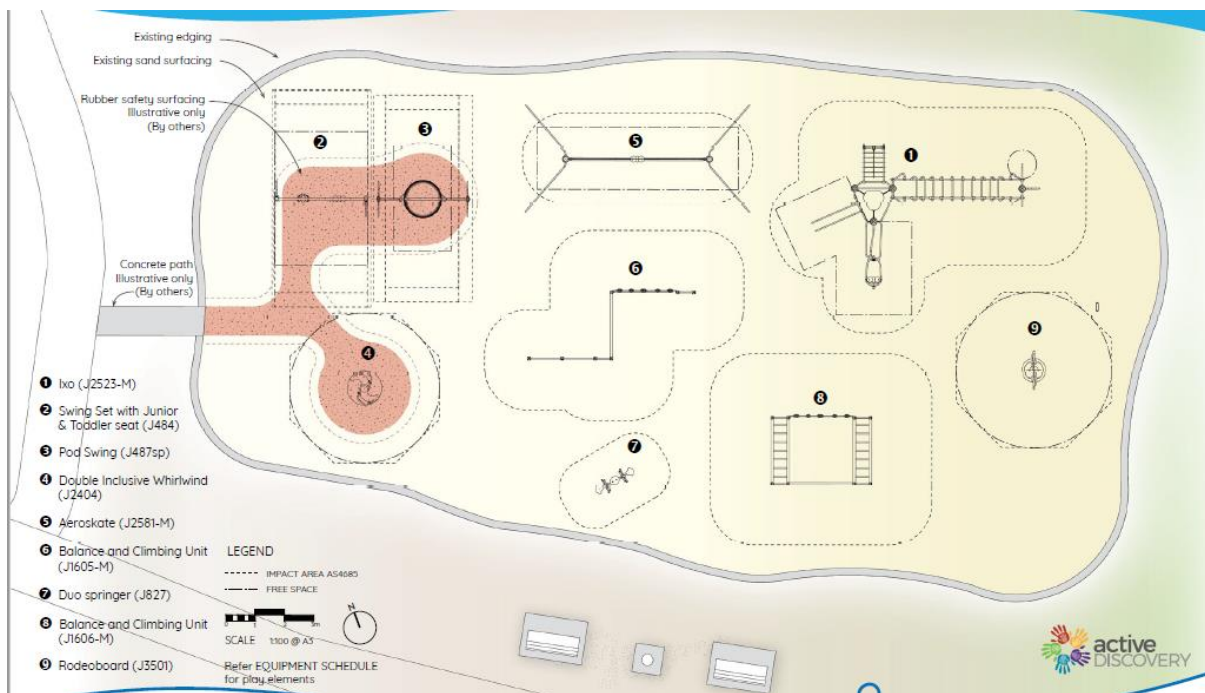
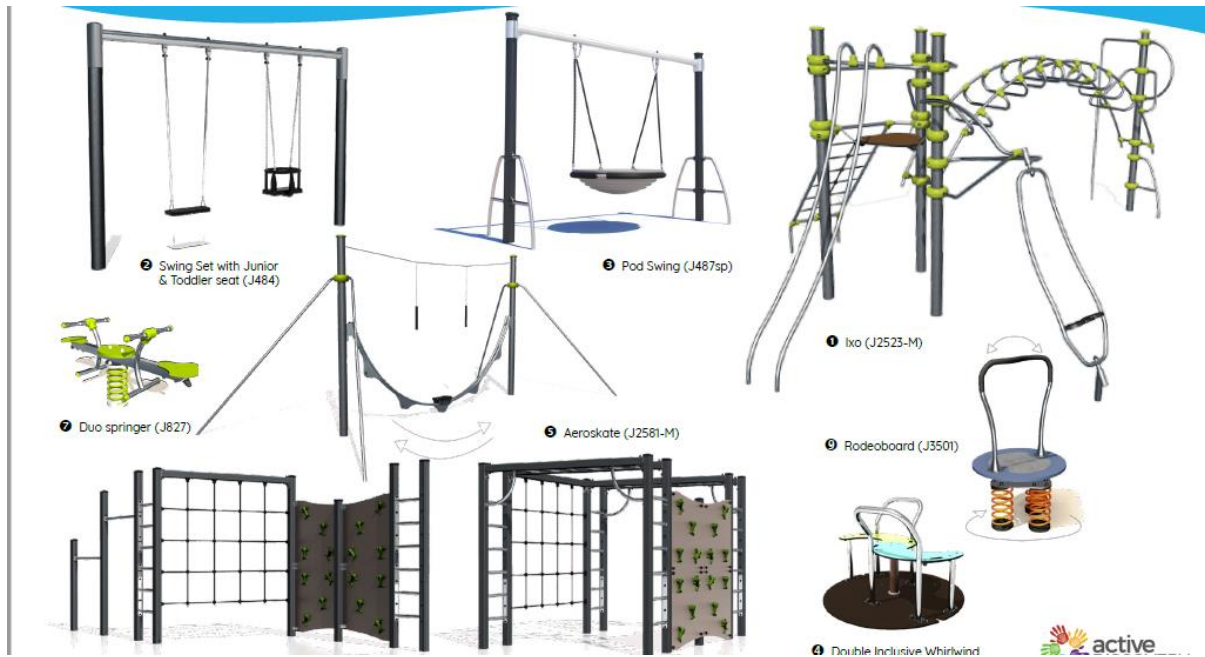
COMPONENT KEY

NUMBER	COMPONENT
1	SPRINK SLIDE
2	GLASS BAL PANEL
3	DELUZE TUCKER/DRIF PAPE
4	DOUBLE BASS DRUM
5	TELESCOPE PANEL
6	CARRO BAMP
7	KICKBALL
8	ARCHED BRIDGE
9	WEB CLIMBER
10	SINGLE WINK SLIDE
11	SHAWNY CLIMBER
12	CARRO BAMP
13	SAFETY STAIRS
14	DELUZE STEERING PANEL
15	CARRO CLIMBER
16	FORBID RAIL
17	COMMANDO CLIMBER
18	BARREL ROLLER
19	WEB WALL
20	CLIPPING MONKEY BAMP
21	ROLL OVER BAR
22	SCALE RAIL
23	FREE POLE AND CLIMBER
24	WEB WALL
25	FREE POLE
26	BIRD NEST SWINGS
27	SH ACTIVITY NET
28	WAVELY DIS
29	CAR ROCKER

Colour Palette

Signal Red	Golden Yellow	Blaze Blue	Space Blue


Option 12




Option 13

CENTENNIAL PARK WEST PLAYGROUND - OPTION 2

EQUIPMENT SCHEDULE





CLIMBING AND BALANCE CHALLENGE

② Kanope Multiplay (J5609)

SWING

① Double Bay Swing with Pod (Z20-0400)

JUNIOR PLAY

③ Duo Springer (J827)

④ Tubaphone (J3410)

⑤ Sammy the Snail Springer (J866)

SPORTS ZONE

⑥ Senior Horizontal Bars (JPS19-S-M)

⑦ Senior Monkey Bars (JPS21-S-M)

⑧ Senior Push up Bars (JPS18-S-M)

ZIP-LINE

⑩ Metal Cableway (J514)

⑨ Penta Post (PPRAINPOSG)


⑧ Tournicolo Carousel (J2401)

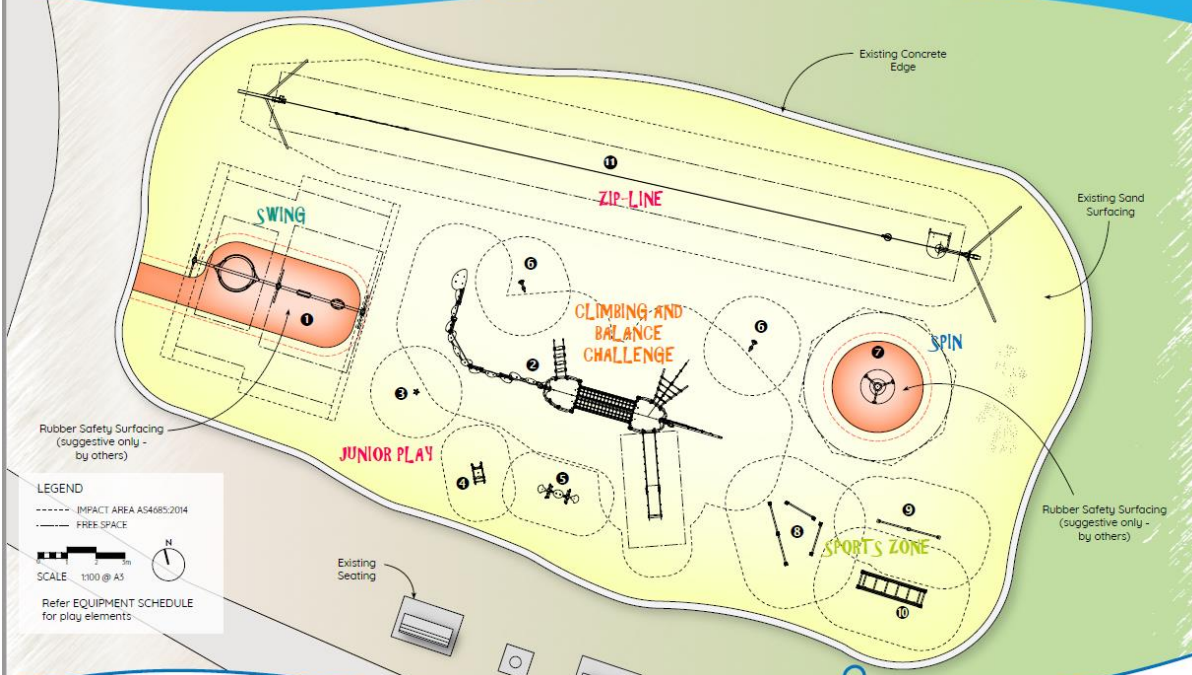
Drawing No: 055330_202 | EQUIPMENT SCHEDULE
Date: 01.07.2021
Drawn: RG
Proludic Pty Ltd intellectual property. Any reproduction, even partial, is prohibited. All rights reserved.

Proludic Pty Ltd | www.proludic.com.au | info@proludic.com.au | 1300 800 181

CENTENNIAL PARK WEST PLAYGROUND - OPTION 2

LAYOUT PLAN





Existing Concrete Edge

Existing Sand Surfacing

Rubber Safety Surfacing (suggestive only - by others)

LEGEND

----- IMPACT AREA AS4685:2014

----- FREE SPACE

SCALE 1:100 @ A5

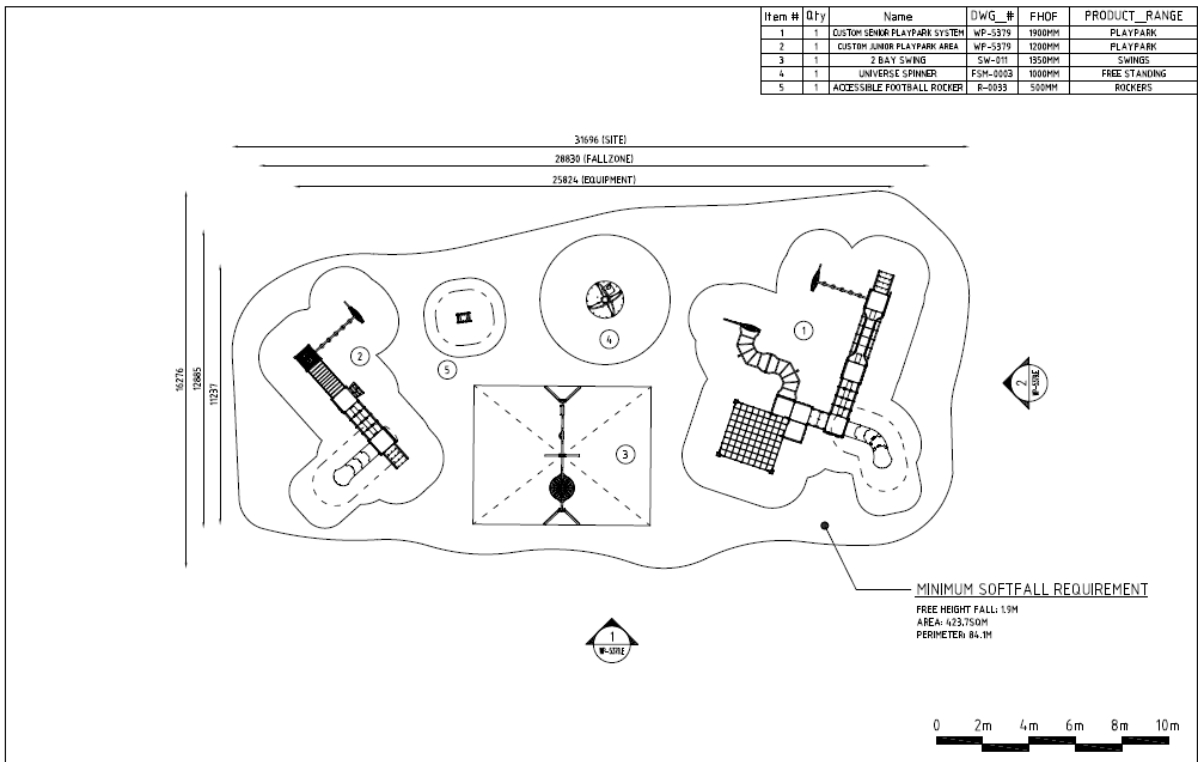
Existing Seating

Refer EQUIPMENT SCHEDULE for play elements

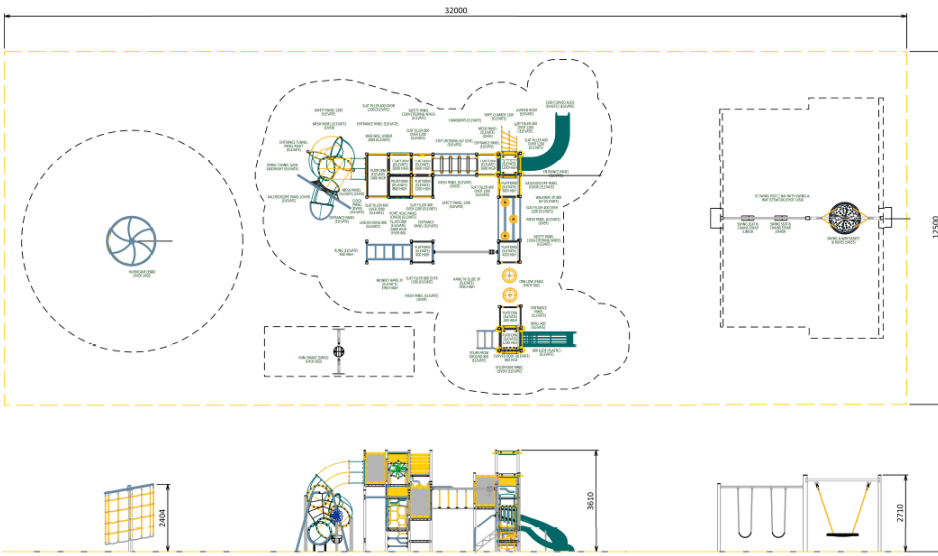
Drawing No: 055330_201 | LAYOUT PLAN
Date: 01.07.2021
Drawn: RG
Proludic Pty Ltd intellectual property. Any reproduction, even partial, is prohibited. All rights reserved.

Proludic Pty Ltd | www.proludic.com.au | info@proludic.com.au | 1300 800 181

Option 14



Option 15



ELEVATE SPECIFICATIONS

SUPPLIERS
 75mm/12mm Aluminium (3.5mm wall thickness). Powder coated.
 Strength: Meets the strength requirements of Section 4.2.2 of AS 4685 SET 2014.
 100% Moulded plastic (polyethylene).
 Our finish of 80-120 microns greatly exceeds the required Australian Standard (AS1171-2001) of 60 microns.

POWDER COATING
 All steel components have a lead and TBC free, baked polyester powder coat finish.
 Fully reinforced, Marine Grade Aluminium (5005-H34). Minimum thickness 3mm. Powder coated finish.

PLATFORMS AND PLATFORM INRILLS
 Fully reinforced, powder-coat.
 Steel Play Components: Meeting the specifications C350.0.
 Stainless Steel 304 and 316 Grade Stainless Steel.

STEEL PLAY COMPONENTS
 Galvanneal Steel - Galvanneal plus, meeting the specifications C350.0.
 Stainless Steel 304 and 316 Grade Stainless Steel.

GRAB POWER COMPONENTS
 Aluminium - Polyethylene (UV stabilised, rating 8) with 930 density. Finish as specified.
 Injection Moulded 30% Glass Filled Nylon.

SLIDES
 Note-moulded polyethylene (UV stabilised, rating 8) with 930 density.
 Stainless steel grade 1706 & 1738.
 Galvanneal steel side (HDC).
 Fully reinforced, commercial grade aluminium (5005-H34). Minimum thickness 3mm. Powder coated finish.

SPINDLES
 Galvanneal steel with powder coated finish.
 Note-moulded polyethylene (UV stabilised, rating 8) with 930 density.
 Tri-laminate high density polyethylene (routed design).
 Marine Grade Laser cut and Borecut Aluminium sheet (5005-H34). Minimum thickness 6mm. Powder coated finish.
 Aluminium 11, Standard 15mm Extruded section.

CHAINS
 6mm short link stainless steel chain.
 12mm and 8mm short link zinc passivated or galvanised chains.

TUNNELS
 Note-moulded polyethylene (UV stabilised, rating 8) with 930 density.
 Fully reinforced, Commercial Grade Aluminium (5005-H34). Minimum thickness 3mm. Powder coated finish.

ROPE
 Rope Diameter - 16mm and 18mm
 Rope Covering - Nylon
 Steel Reinforcement - 6 in galvanised wire strand 1570N/mm²
 Hydraulically pressed aluminium armrests
 Stainless steel hardware
 Plastic connectors - Nylon

BOLTS
 All bolts, nuts and fittings meet Australian Standard AS 1112 and AS 1396.
 Pan head tribular recess with cone point and tamper proof head.
 Cone hardened to 450 HV5 minor unit.
 Finish: zinc 5 microns and yellow dichromate.
 Size: M10 D1 x 1.5 thread. Also available as 1302 stainless steel.

WOOD
 Available in the following materials:
 1. Note-moulded polyethylene (UV stabilised, rating 8) with 930 density.
 2. Zinc-plated steel with powder-coat finish.
 3. Marine Grade Laser cut and Borecut Aluminium sheet (5005-H34). Minimum thickness 6mm. Powder coated finish.

TIPS & SPINDLES
 Available in the following materials:
 1. Aluminium (5005-H34) with powder coated finish.
 2. Galvanneal steel with powder coated finish, using 8 with 930 density.
 3. Note-moulded polyethylene (UV stabilised, rating 8) with 930 density.

SPRING EQUIPMENT
 Springs available in the following materials:
 1. Cold aluminium and fabricated steel.
 2. Tri-laminate high density polyethylene. Springs are not protected. Flange plates zinc passivated. All aluminium, plates and springs have a powder coated finish.

TIMBER
 100% Meranti of the Shorea species - A light hardwood
 100% Meranti is resistant to insect attack.
 Coated with a long lasting UV and weather resistant timber stain.
 All Forepart timber is responsibly sourced through a FSC certified supplier.

ELEVATION

