



Frenchman Bay |





Schematic Design | November 2023

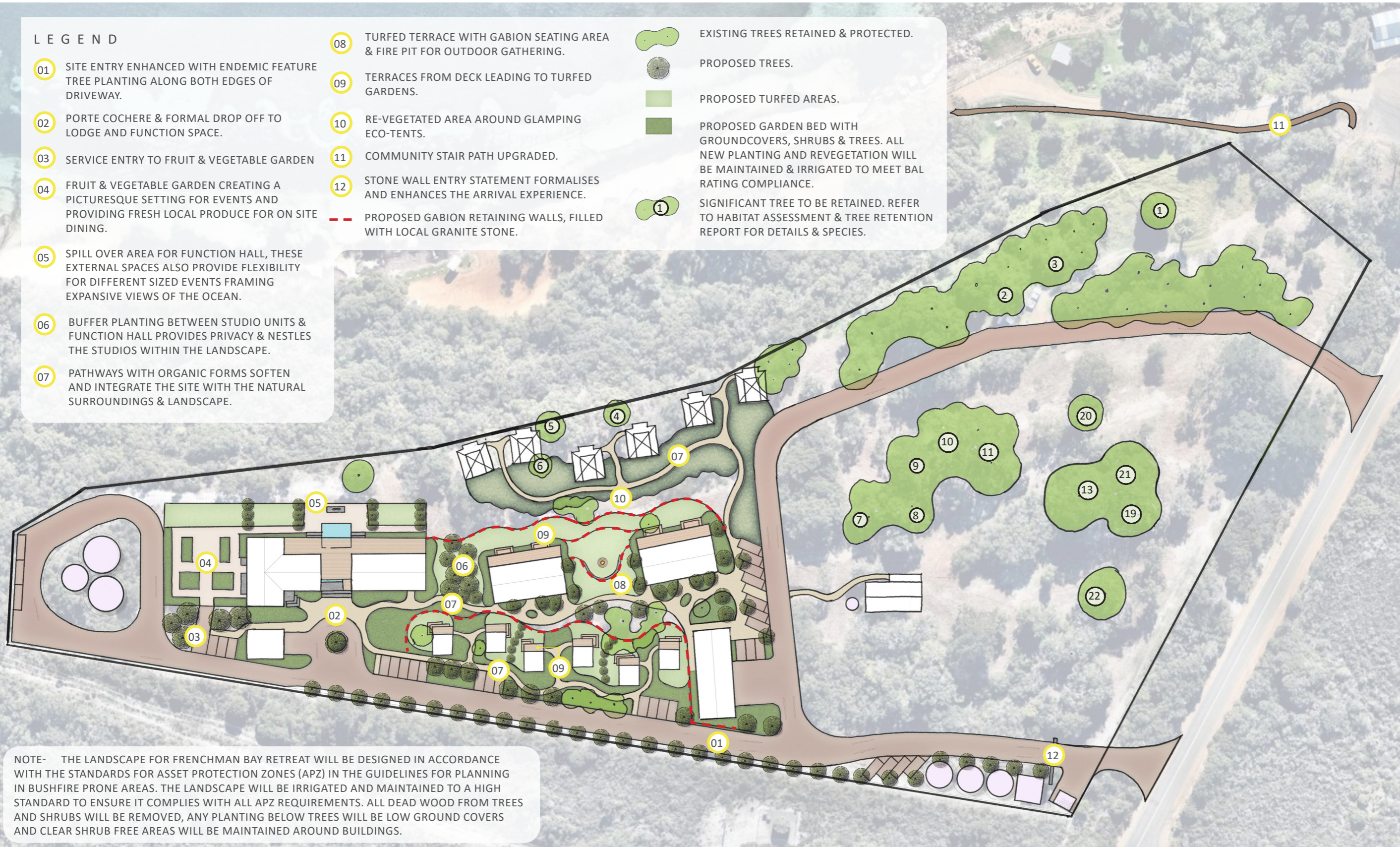


LEGEND

- 01 SITE ENTRY ENHANCED WITH ENDEMIC FEATURE TREE PLANTING ALONG BOTH EDGES OF DRIVEWAY.
- 02 PORTE COCHERE & FORMAL DROP OFF TO LODGE AND FUNCTION SPACE.
- 03 SERVICE ENTRY TO FRUIT & VEGETABLE GARDEN
- 04 FRUIT & VEGETABLE GARDEN CREATING A PICTURESQUE SETTING FOR EVENTS AND PROVIDING FRESH LOCAL PRODUCE FOR ON SITE DINING.
- 05 SPILL OVER AREA FOR FUNCTION HALL, THESE EXTERNAL SPACES ALSO PROVIDE FLEXIBILITY FOR DIFFERENT SIZED EVENTS FRAMING EXPANSIVE VIEWS OF THE OCEAN.
- 06 BUFFER PLANTING BETWEEN STUDIO UNITS & FUNCTION HALL PROVIDES PRIVACY & NESTLES THE STUDIOS WITHIN THE LANDSCAPE.
- 07 PATHWAYS WITH ORGANIC FORMS SOFTEN AND INTEGRATE THE SITE WITH THE NATURAL SURROUNDINGS & LANDSCAPE.

- 08 TURFED TERRACE WITH GABION SEATING AREA & FIRE PIT FOR OUTDOOR GATHERING.
- 09 TERRACES FROM DECK LEADING TO TURFED GARDENS.
- 10 RE-VEGETATED AREA AROUND GLAMPING ECO-TENTS.
- 11 COMMUNITY STAIR PATH UPGRADED.
- 12 STONE WALL ENTRY STATEMENT FORMALISES AND ENHANCES THE ARRIVAL EXPERIENCE.
- PROPOSED GABION RETAINING WALLS, FILLED WITH LOCAL GRANITE STONE.

-  EXISTING TREES RETAINED & PROTECTED.
-  PROPOSED TREES.
-  PROPOSED TURFED AREAS.
-  PROPOSED GARDEN BED WITH GROUNDCOVERS, SHRUBS & TREES. ALL NEW PLANTING AND REVEGETATION WILL BE MAINTAINED & IRRIGATED TO MEET BAL RATING COMPLIANCE.
-  SIGNIFICANT TREE TO BE RETAINED. REFER TO HABITAT ASSESSMENT & TREE RETENTION REPORT FOR DETAILS & SPECIES.



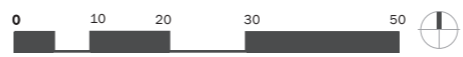
NOTE- THE LANDSCAPE FOR FRENCHMAN BAY RETREAT WILL BE DESIGNED IN ACCORDANCE WITH THE STANDARDS FOR ASSET PROTECTION ZONES (APZ) IN THE GUIDELINES FOR PLANNING IN BUSHFIRE PRONE AREAS. THE LANDSCAPE WILL BE IRRIGATED AND MAINTAINED TO A HIGH STANDARD TO ENSURE IT COMPLIES WITH ALL APZ REQUIREMENTS. ALL DEAD WOOD FROM TREES AND SHRUBS WILL BE REMOVED, ANY PLANTING BELOW TREES WILL BE LOW GROUND COVERS AND CLEAR SHRUB FREE AREAS WILL BE MAINTAINED AROUND BUILDINGS.

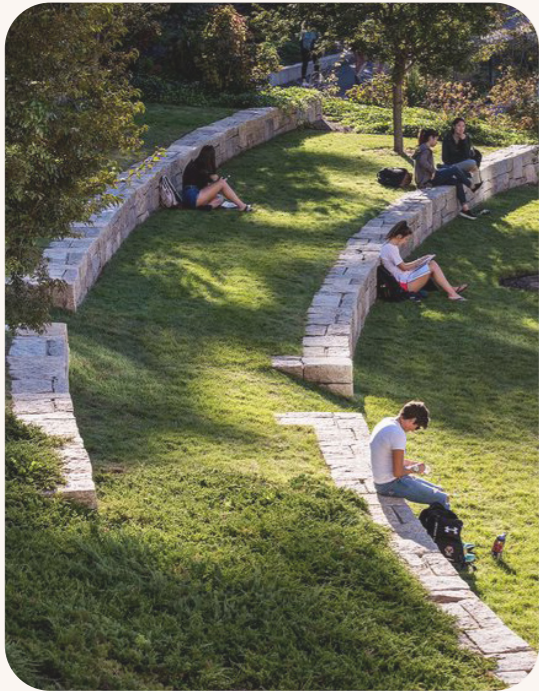
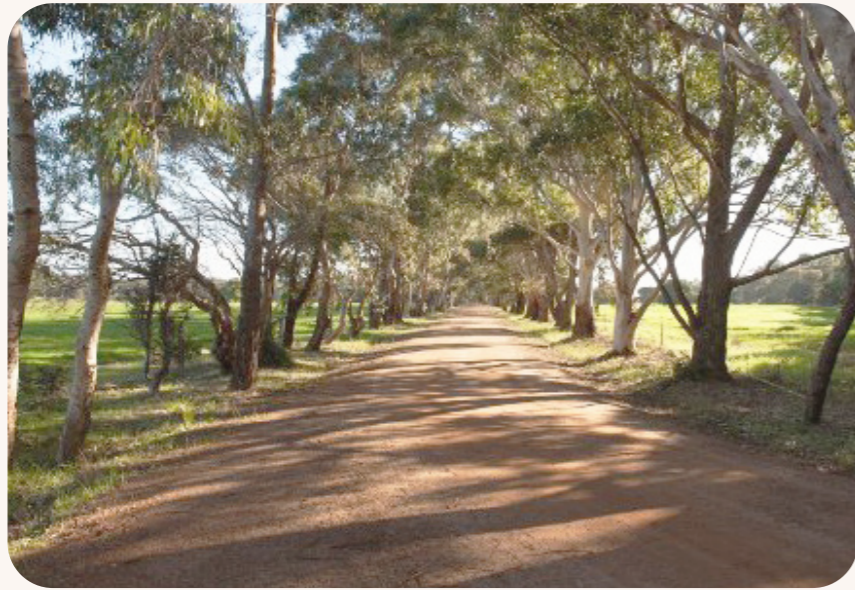


LANDSCAPE ARCHITECTS
 LEVEL 1 278 RAILWAY PDE WEST LEEDERVILLE WA 6007
 T: (08) 9388 9566 E: mail@plane.com.au

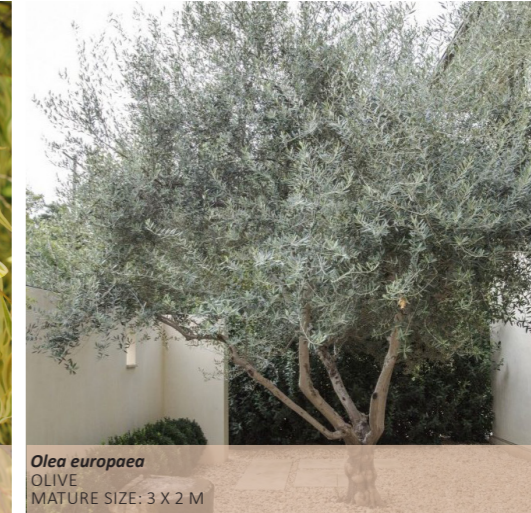
FRENCHMAN BAY RETREAT
 PREPARED FOR HUB PROPERTY GROUP
 NOVEMBER 2023

SD.103
 REV D
 SCALE: 1:1000 @ A3





SMALL TREES 1-6M



MEDIUM TREES 8-15M





Myoporum insulae
BOOBIALLA
MATURE SIZE: 5 X 2 M
GROWTH HABIT: MEDIUM / TALL OPEN SHRUB



Grevillea crithmifolia 'Little Crith'
LITTLE CRITH
MATURE SIZE: 1 X 1M
GROWTH HABIT: COMPACT SHRUB



Acacia lasiocarpa
DUNE MOSES
MATURE SIZE: 1 X 2 M
GROWTH HABIT: SMALL SHRUB, MOUND SHAPED



Conostylis candicans
GREY COTTONHEADS
MATURE SIZE: 0.3 X 0.5 M
GROWTH HABIT: COMPACT - CLUMPING



Westringia dampieri
COASTAL ROSEMARY
MATURE SIZE: 1.5 X 1 M
GROWTH HABIT: COMPACT MEDIUM SHRUB



Olearia axillaris
COASTAL DAISYBUSH
MATURE SIZE: 1 X 2 M
GROWTH HABIT: DENSE MEDIUM SHRUB



Lepidosperma gladiatum
COAST SWORD SEDGE
MATURE SIZE: 1 X 1 M
GROWTH HABIT: CLUMPING SEDGE



Trachymene coerulea
ROTTNEEST ISLAND DAISY
MATURE SIZE: 1 X 1 M
GROWTH HABIT: LOW GROWING ANNUAL



Enchylanea tomentosa
RUBY SALT BUSH
MATURE SIZE: 1 X 1 M
GROWTH HABIT: SMALL SHRUB



Grevillea preissii
SPIDER-NET GREVILLEA
MATURE SIZE: 1 X 2 M
GROWTH HABIT: SMALL SHRUB



Rhagodia baccata
BERRY SALT BUSH
MATURE SIZE: 1 X 2 M
GROWTH HABIT: ROBUST, LOW-SPREADING SHRUB



Pimelea ferruginea
COAST BANJINE
MATURE SIZE: 0.7 X 0.7 M
GROWTH HABIT: SMALL DENSE SHRUB



GRASSES / STRAPPY LEAF



FEATURE PLANTS

