






**Proposed road excision and closures affecting Reserve 24258 Torndirrup National Park  
Frenchman Bay Road & Quaranup Road**



This map has been produced by the City of Albany using data from a range of agencies. The City bears no responsibility for the accuracy of this information and accepts no liability for its use by other parties.

Reproduced by permission of Western Australian Land Information Authority, Copyright Licence SLIP 1028-2017-1. [www.landgate.wa.gov.au](http://www.landgate.wa.gov.au)

**LEGEND**

- Proposed land excision 
- Proposed road closures 
- Reserve 24258 Torndirrup National Park 



**Proposed road excision and closures affecting Reserve 24258 Torndirrup National Park  
Frenchman Bay Road  
between Quaranup Road & The Gap Road**

SCALE @ A4: Date Printed: 17/11/2022



This map has been produced by the City of Albany using data from a range of agencies. The City bears no responsibility for the accuracy of this information and accepts no liability for its use by other parties.

Reproduced by permission of Western Australian Land Information Authority, Copyright Licence SLIP 1028-2017-1. [www.landgate.wa.gov.au](http://www.landgate.wa.gov.au)



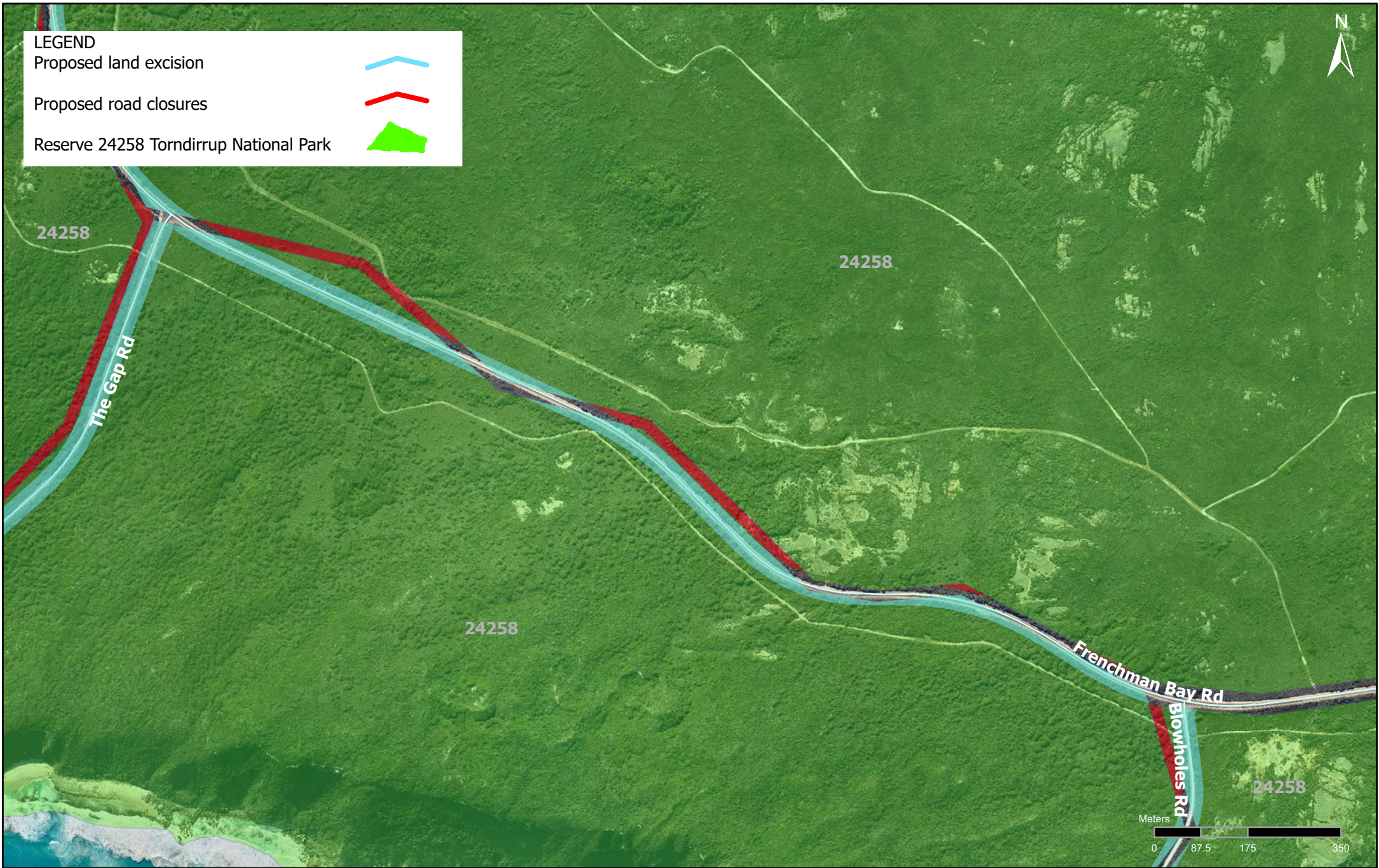
**Proposed road excision and closures affecting Reserve 24258 Torndirrup National Park**  
**Salmon Hole Road**

SCALE @ A4: Date Printed: 13/12/2022



This map has been produced by the City of Albany using data from a range of agencies. The City bears no responsibility for the accuracy of this information and accepts no liability for its use by other parties.

Reproduced by permission of Western Australian Land Information Authority, Copyright Licence SLIP 1028-2017-1. [www.landgate.wa.gov.au](http://www.landgate.wa.gov.au)



**Proposed road excision and closures affecting Reserve 24258 Torndirrup National Park  
Frenchman Bay Road  
between The Gap Road & Blowholes Road**

SCALE @ A4: Date Printed: 17/11/2022



This map has been produced by the City of Albany using data from a range of agencies. The City bears no responsibility for the accuracy of this information and accepts no liability for its use by other parties.

Reproduced by permission of Western Australian Land Information Authority, Copyright Licence SLIP 1028-2017-1. [www.landgate.wa.gov.au](http://www.landgate.wa.gov.au)



**Proposed road excision and closures affecting Reserve 24258 Torndirrup National Park  
Blowholes Road**

SCALE @ A4: Date Printed: 17/11/2022



This map has been produced by the City of Albany using data from a range of agencies. The City bears no responsibility for the accuracy of this information and accepts no liability for its use by other parties.

Reproduced by permission of Western Australian Land Information Authority, Copyright Licence SLIP 1028-2017-1. [www.landgate.wa.gov.au](http://www.landgate.wa.gov.au)



**Proposed road excision and closures affecting Reserve 24258 Torndirrup National Park**  
**Salmon Hole Road**

SCALE @ A4: Date Printed: 17/11/2022



This map has been produced by the City of Albany using data from a range of agencies. The City bears no responsibility for the accuracy of this information and accepts no liability for its use by other parties.

Reproduced by permission of Western Australian Land Information Authority, Copyright Licence SLIP 1028-2017-1. [www.landgate.wa.gov.au](http://www.landgate.wa.gov.au)