



ATTACHMENTS

Development and Infrastructure Services Committee Meeting

15 July 2020

6.00pm

City of Albany Council Chambers

TABLE OF CONTENTS

Attachment	Report No.	Description	Page Nos.
B		Development & Infrastructure Services Committee	
	DIS217	CITIES POWER PARTNERSHIP FLYER	1
	DIS218	ARIAL IMAGE PLAN OF SUBJECT AREA	21 22
	DIS219	SCHEDULE OF SUBMISSIONS LOCAL HERITAGE SURVEY LIST SCHEME HERITAGE LIST COMMUNITY UPDATE (APRIL 2020)	23 33 46 58



**CITIES POWER
PARTNERSHIP**

Since 2009 renewable
become the preferred
electricity generation



CITIES POWER PARTNERSHIP

2019 Information for councils



**CLIMATE
COUNCIL**



climatecouncil.org.au

Cities Power Partnership

cpp@climatecouncil.org.au
citiespowerpartnership.org.au

© 2019 Climate Council



A National Program for 2019

Contents

1

Executive Summary

2

The Climate Council

3

The Challenge

3

Local Champions

5

A Snapshot of the
Cities Power Partnership

6

How the Cities Power
Partnership works

6

Become a Power Partner

7

Power Up

7

Power On

8

What Does Success Look Like?

9

Frequently Asked Questions

10

Appendix A

13

Appendix B

15

References

Executive Summary

Australia is on the frontline of climate change and its impacts.

We continue to swelter through record breaking heat, lengthening bushfire seasons, worsening coastal flooding and supercharged storms. Meanwhile, the national energy debate is reaching fever pitch, with renewable energy lambasted by our nation's political and industry leaders as unreliable and unaffordable, whilst "clean coal" technology and gas expansion is being promoted as Australia's future energy solution. As climate impacts worsen and government action stagnates, the window of opportunity to limit the warming of the planet is rapidly closing.

Throughout all of these challenges, local heroes have quietly been getting on with the job. Cities and towns across Australia are surging ahead with emissions reduction plans, switching to cleaner energy and building greener, efficient and more resilient communities. The Cities Power Partnership (CPP) elevates and accelerates this action across the country. We know that transforming the way cities use and generate energy alone has the potential to deliver 70% of the total emissions reductions needed to stay on track for the 2 degrees limit set under the Paris Agreement.

The CPP engages with towns and cities, via local councils, throughout Australia and incentivises councils to increase renewable energy and energy efficiency, improve transport and engage in advocacy. Members are also given access to a national knowledge hub and a project assesment and tracking tool. They are buddied with other cities to knowledge share, visited by domestic and international experts, connected with community energy groups and celebrated at events with other local leaders. We also showcase the incredible achievements of cities in national, local and social media to millions and share their successes with our community of over 200,000 members and supporters.

"Cities and towns across Australia are surging ahead with emissions reduction plans"

The Climate Council

\$102m

**worth of
media.**

448m

**cumulative
audience.**

112

reports.

The Climate Council is Australia's leading climate communications organisation. To date the Climate Council has produced 112 reports on climate impacts and solutions and was the number one organisation communicating on climate change nationally in 2018.

The Climate Council brings a unique set of skills that enable us to build and deliver the Cities Power Partnership program and ensure that it differs from existing programs for local councils. The Climate Council has significant media reach, generating nearly \$102 million worth of media, reaching a cumulative audience of 448 million. This media reach is a key incentive for cities to join the program as well as working to strengthen public support across the country for climate action at the local level.

In addition, the Climate Council hosts a wealth of leading experts in climate impacts and renewable energy solutions whose technical knowledge is key to helping local councils to implement emissions reduction measures.

The Climate Council also uses its national status and the credibility of its Climate Councillors to connect councils across the country with community energy groups and local organisations who can help councils to implement energy efficiency and renewable energy measures quickly and effectively, as well as assist with accessing funding and incentives for councils to act.

The Challenge

Global heat records have been broken again, with the past four years being the hottest years on record. In Australia, 2018 was the third hottest year on record, and nine of the ten hottest years on record have occurred since 2005. Australians continues to swelter through record breaking heat, lengthening bushfire seasons, worsening coastal flooding and supercharged storms.

The emission of greenhouse gases from the burning of fossil fuels like coal, oil and gas, are driving these dramatic changes of the climate system and need to be drastically reduced. However, the window of opportunity to limit the warming of the planet and its catastrophic impacts is rapidly closing and governments are struggling to meet this challenge at the pace required.

Local Champions

In the face of these challenges local champions have emerged.

Around the world and across Australia, towns and cities of all shapes and sizes are getting on with the job. They are surging ahead with emissions reduction plans, switching to cleaner energy and building greener, efficient and more resilient communities. From booming urban centres to small rural townships, local governments and groups of determined residents have been energy and climate trailblazers in many ways. Towns and cities can shape how land is used, investments are made and millions of dollars worth of renewable energy is rolled out. They can influence how new homes and businesses are built, determine the ways in which hundreds of thousands of residents will travel each day and band together to lobby for much needed state and federal policy change. Transforming the way cities use and generate energy alone has the potential to deliver 70% of the total emissions reductions needed to stay on track for the 2 degrees limit set under the Paris Agreement (IEA 2016).

"Local governments and groups of determined residents have been energy and climate trailblazers in many ways."



A Snapshot of the Cities Power Partnership

100

Member
councils &
growing.

300+

Towns
and cities
represented.

10m

Australians
represented.

The Climate Council's Cities Power Partnership (CPP) seeks to celebrate and accelerate the emission reduction and clean energy successes of Australian towns and cities to date. We are calling on Mayors, Councilors and communities to take the next step towards a sustainable, non-polluting energy future by joining the CPP.

The CPP launched mid 2017, along with a Climate Council cities report authored by some of Australia's leading experts, a brand new CPP website and a media campaign featuring the 35 trailblazing councils who joined the partnership in round 1.

A round 2 launch in January 2018 saw us grow to 70 members, representing 8 million Australians and making us the largest climate action program for local government in the country. Round 3 launched in late 2018 and brought the CPP up to 100 local government areas. We now represent more than 300 towns and cities and rural shires across all Australian states and territories. See Appendix C for member list.

The CPP launch broke Climate Council media coverage records

The CPP media launch was held at the Mt Majura Solar Farm in the ACT and featured Climate Councilor Professor Tim Flannery, Climate Council CEO Amanda McKenzie, ACT Environment Minister Shane Rattenbury MLC and Lane Crockett, Head of Renewable Infrastructure, Impact Investment Group.

A record breaking coverage of 8 front pages, 250+ broadcast media items and 210+ print & online items. Each of the attending Mayors and Councillors and council communications teams received a comprehensive media kit including:

- › Tailored media hits report,
- › Certificate ceremony photos with Professor Tim Flannery,
- › Mayoral test drive photos of the CPP branded Tesla electric cars,
- › Individual interviews to camera explaining reasons for joining the Cities Power Partnership and what Council hopes to achieve,
- › Drone footage of the Mt Majura solar farm tour,
- › Parliament house media stop video footage

Participating councils who join the partnership have 6 months to select 5 key actions from the partnership pledge ranging from renewable energy, efficiency, transport and advocacy (see Appendix A for full pledge list and Appendix B for pledge examples).

Future applications

Please contact us at cpp@climatecouncil.org.au to find out how your council can join the program

How the Cities Power Partnership Works



Become a Power Partner

Act:

Councils sign up to be a Power Partner.

Knowledge:

Partners get exclusive access to the extensive online knowledge hub, webinars and Power Analytics tool.

Connect:

Each Power Partner is buddied with other local councils to knowledge share throughout the year.

Profile:

Power partners are profiled in national and local media, online and to our 200,000 members and supporters.

2

Power Up

Act:

Partners have 6 months to select 5 key actions from the partnership pledges ranging from renewable energy, efficiency, transport and advocacy. They must identify a point of contact within council who will liaise with the Climate Council and work to implement their actions. Pledges are submitted by each partner and profiled online.

Knowledge:

Partners will have ongoing access to the knowledge hub, reporting tool, webinars with domestic and international experts as well as communications and advocacy training where required.

Connect:

Power Partners will be buddied within & across state borders to deepen knowledge sharing across joint project areas of interest. Councils can also be connected with their local community energy group and relevant local organisations who can help with implementation of emission reduction actions. Councils who are already leading will play an important knowledge sharing role with other partners.

Incentives:

Power Partners will be assisted with applications for project funding, third party grants and renewable energy incentives as they become available.

Profile:

Power partners and their local success stories will be profiled in the media by our dedicated CPP team Media Advisors working with Council communications teams. Climate Councillors will travel to a range of communities across Australia to engage in community events and talk to councils.

3

Power On

Act:

Partners report on progress against key actions in a 6 monthly survey, following the submission of their 5 pledge items.

Knowledge:

Partners access local and international knowledge and inspiration at various Roundtables.

Connect:

Partners are brought together to celebrate the high achieving towns and cities at the Power Partners Summit.

Profile:

Success stories are continually celebrated in the media. The CPP annual awards, recognise & celebrate best practice project outcomes, collaborations and individual contributions. Climate Councillors travel to a range of Australian communities, as more towns and cities become Power Partners and lead the switch to non-polluting energy across the country.

What Does Success Look Like?

By the end of 2018, the Cities Power Partnership generated more than 2100 media items and at 100 members and growing, is now the largest climate action program for local government in the country.

The Power Partners are supported to implement their pledge items through webinars with topic experts, access to shared project data via the knowledge hub and networking with their peers through the CPP buddying program.



Frequently Asked Questions

When did the Cities Power Partnership launch?

It launched in July 2017. This launch included the launch of the CPP website, the Local Government Action research report, a media and stakeholder launch which showcased the 35 towns and cities who had already pledged and a national media campaign.

A round 2 launch was held in January 2018 to welcome a further 30 councils joining in the latter half of 2018, bringing the total to 100 councils in every state and territory.

Can the broader community nominate their town or city to be part of the Cities Power Partnership?

Yes. Nominations can easily be made through the website at citiespowerpartnership.org.au/nominate/. Tell us why you think your council or any other would be a good fit and if you have recommended points of contact within councils, either staff or elected representatives, we're all ears.

How do community energy organisations get involved?

We are actively reaching out to community energy organisations across the country to get involved. The Cities Power Partnership wants to profile and connect community energy groups with councils involved in the partnership. There is an action pledge under "Work Together and Influence" for councils to strive to "support community energy groups with their community energy initiatives". This connection is vital to help councils achieve success as community energy groups and the community more broadly can provide on the ground support, including workshops and modelling, to help councils achieve their energy and sustainability commitments.

What if a town or city is already leading in renewable energy and sustainability, what does their city get out of joining the partnership?

Cities leading the way play an essential role in the partnership. They share their knowledge with other cities, their successes are celebrated to an audience of millions to inspire others and they will have access to resources and incentives to help them to continue to lead.

Many trailblazing cities who are already leading will have some of their existing initiatives counted towards their power partnership pledge.

Appendix

Appendix A: The Partnership Action Pledges

Participating councils who join the partnership will have 6 months to select 5 key actions from the options below.

Renewable Energy



1. Develop supportive planning laws to encourage residents and industry to adopt renewable energy.



2. Use council resources to support the uptake of renewable energy



3. Install renewable energy (solar PV and battery storage) on council buildings.



4. Support community facilities to access renewable energy through incentives, support or grants.



5. Power council operations by renewable energy, and set targets to increase the level of renewable power for council operations over time.



6. Provide incentives and/or remove barriers to encourage local businesses to take up solar power and battery storage.



7. Support local community renewable energy projects, and encourage investment in community energy.

Energy Efficiency



- 8.** Opening up unused council managed land for renewable energy.



- 9.** Facilitate large energy users collectively tendering and purchasing renewable energy at a low cost.



- 10.** Set minimum renewable energy benchmarks for new developments.



- 11.** Electrify public transport systems and fleet vehicles and power these by 100% renewable energy.



- 12.** Lobby electricity providers and state government to address barriers to local renewable energy uptake.



- 13.** Identify opportunities to turn organic waste into electricity.



- 14.** Implement landfill gas methane flaring or capture for electricity generation.



- 15.** Create a revolving green energy fund to finance renewable energy projects.



- 1.** Set minimum energy efficiency benchmarks for all planning applications.



- 2.** Adopt best practice energy efficiency measures across all council buildings, and support community facilities to adopt these measures.



- 3.** Roll out energy efficient lighting across the municipality.



- 4.** Provide incentives for energy efficient developments and upgrades to existing buildings.



- 5.** Incentivise use of energy efficient heating and cooling technologies.



- 6.** Create a green revolving energy fund to finance energy efficiency projects

Sustainable Transport



1. Ensure Council fleet purchases meet strict greenhouse gas emissions requirements and support the uptake of electric vehicles.



2. Provide fast-charging infrastructure throughout the city at key locations for electric vehicles.



3. Encourage sustainable transport use such as public transport, walking and cycling through council transport planning and design.



4. Ensure that new developments are designed to maximize public and active transport use, and support electric vehicle uptake.



5. Support cycling through provision of adequate cycle lanes, bike parking and end-of-ride facilities.



6. Reduce or remove minimum car parking requirements for new housing and commercial developments where suitable public transport alternatives exist.



7. Lobby state and federal governments to increase sustainable transport options



8. Create disincentives for driving high emitting vehicles.



9. Convert council waste collection fleet to hydrogen or electric power.

Work Together and Influence



1. Set city-level renewable energy or emissions reduction targets.



2. Lobby state and federal government to address barriers to the take up of renewable energy, energy efficiency and/or sustainable transport.



3. Set up meetings and attend events to work with other cities on tackling climate change.



4. Develop education and behaviour-change programs to support local residents and businesses to tackle climate change through clean energy, energy efficiency and sustainable transport.



5. Lobby for state and federal support for a just transition away from coal-driven industry for local workers and the community.



6. Develop procurement policy to ensure that the practices of contractors and financiers align with council's renewable energy, energy efficiency and sustainable transport goals.



7. Support the local community to develop capacity and skills to tackle climate change.



8. Support local community energy groups with their community energy initiatives.



9. Achieve 100% divestment from fossil fuel aligned investments at the earliest possible date.

Appendix

Appendix B: Pledge Examples

Renewable energy

Action	Examples	Link
Install renewable energy (solar PV and battery storage) on council buildings	Bathurst Council installed solar systems across nine council buildings	https://www.bathurst.nsw.gov.au/environment/energy-sustainability/solar-power-on-council-buildings.html
Facilitate large energy users collectively tendering and purchasing renewable energy at a low cost.	The Melbourne Renewable Energy Project involves bringing together a number of large energy users to collectively tender for renewable energy.	https://www.melbourne.vic.gov.au/business/sustainable-business/mrep/Pages/melbourne-renewable-energy-project.aspx

Energy efficiency

Action	Examples	Link
Roll out energy efficient lighting across the municipality.	Wingecarribee Shire Council – participation in Lighting the Way Streetlighting upgrade	http://media.wsc.nsw.gov.au/council-and-endeavour-energy-roll-out-street-light-upgrade/
Create a green revolving energy fund to finance energy efficiency projects	Penrith City Council Sustainability Revolving fund has supported 42 projects to the value of more than \$1.5 million. Combined these projects result in savings of almost \$600,000 each year, along with abatement of more than 3,100 tonnes of CO ₂ e.	https://www.penrithcity.nsw.gov.au/Documents/Waste-and-Environment/Sustainability-Revolving-Fund-Guidelines/

Sustainable transport

Action	Examples	Link
Ensure Council fleet purchases meet strict greenhouse gas emissions requirements and support the uptake of electric vehicles.	Charge Together initiative	https://www.chargetogether.com/about-the-program
Provide fast-charging infrastructure throughout the city at key locations for electric vehicles.	Regional 3 Council Program Waverley, Woollahra & Randwick Councils	http://www.waverley.nsw.gov.au/top_link_pages/news_and_media/council_news/news/a_nsw_first_for_electric_vehicle_owners

Work together and influence

Action	Examples	Link
Set city-level renewable energy or emissions reduction targets.	Darebin has set a target of zero net carbon emissions across Darebin by 2020 and released the first ever Climate Emergency Plan.	https://www.bathurst.nsw.gov.au/environment/energy-sustainability/solar-power-on-council-buildings.html
Support the local community to develop capacity and skills to tackle climate change	Hepburn Shire and ZNet Hepburn Shire created the 10 year Community Transition Plan	https://z-net.org.au/hepburn/

References

- Alinta Energy (2014) Port Augusta Solar Thermal Generation Feasibility Study Stage 1 – Pre-feasibility Study Options Study Report. Accessed at <https://alintaenergy.com.au/Alinta/media/Documents/2263503A-POW-RPT-001-RevD-Options-Study-Report.pdf>
- Bathurst Regional Council (2016) Solar Power on Council Buildings. Accessed at <https://www.bathurst.nsw.gov.au/environment/energy-sustainability/solar-power-on-council-buildings.html>
- City of Adelaide (2014) Tindo – The World’s First Solar Electric Bus. Accessed at http://www.cityofadelaide.com.au/assets/acc/Environment/energy/docs/tindo_fact_sheet.pdf
- City of Adelaide (2017) Sustainability Incentives Scheme. Accessed at <http://www.cityofadelaide.com.au/your-council/funding/sustainable-city-incentives-scheme/>
- City of Greater Geelong (2016) Sustainable Council Buildings. Accessed at <http://www.geelongaustralia.com.au/environment/article/item/8ce78d636c74b86.aspx>
- City of Moonee Valley (2017) Solar Bulk Buy. Accessed at <http://www.mvcc.vic.gov.au/for-residents/environment-programs/my-home/solar-bulk-buy.aspx>
- Cockburn (2017) Renewable Energy in Cockburn. Accessed at http://www.cockburn.wa.gov.au/Council_Services/Environment/Renewable_Energy/
- Energy Matters (2014) Solar Saver Program. Accessed at <http://www.energymatters.com.au/images/news/2014/solar-saver-bulkbuy.pdf>
- Farming the Sun (2017) Solar Farm Business Model. Accessed at <http://farmingthesun.net/lismore/business-model/>
- IEA (2016) Energy Technology Perspectives 2016. Towards Sustainable Urban Energy Systems. Accessed at https://www.iea.org/publications/freepublications/publication/EnergyTechnologyPerspectives2016_ExecutiveSummary_EnglishVersion.pdf
- Inner West Council – Leichhardt (2016) Council Solar Panels. Accessed at <http://www.leichhardt.nsw.gov.au/Environment--Sustainability/Projects-and-Programs/Council-Solar-Panels>
- IPWEA (2016) Case study: North Sydney Council electric bike fleet. Accessed at <http://www.ipwea.org/victoria/communities/communityblogs/blogviewer?BlogKey=ad5a330e-17df-4eec-a55b-a4a7b25c98ac>
- IRENA (2016) Renewable Energy in Cities. Accessed at http://www.irena.org/DocumentDownloads/Publications/IRENA_Renewable_Energy_in_Cities_2016.pdf
- Jay Weatherill (2016) ZEN Energy to install \$1m battery storage on Government-owned buildings. Accessed at <http://www.premier.sa.gov.au/index.php/tom-koutsantonis-news-releases/896-zen-energy-to-install-1m-battery-storage-on-government-owned-buildings>
- KMH Environmental (2014) Project: Bathurst Regional Council Energy Audits. Accessed at <http://www.kmh.com.au/projects/bathurst-energy-audits/>
- Moreland City Council (2017) Electric vehicles. Accessed at <http://www.moreland.vic.gov.au/parking-roads/transport/electric-vehicles/>
- Wangaratta Chronicle (2016) \$40M farm a goer. Accessed at <http://wangarattachronicle.com.au/2016/11/23/40m-farm-a-goer/>

Cities Power Partnership

cpp@climatecouncil.org.au
citiespowerpartnership.org.au

© 2019 Climate Council

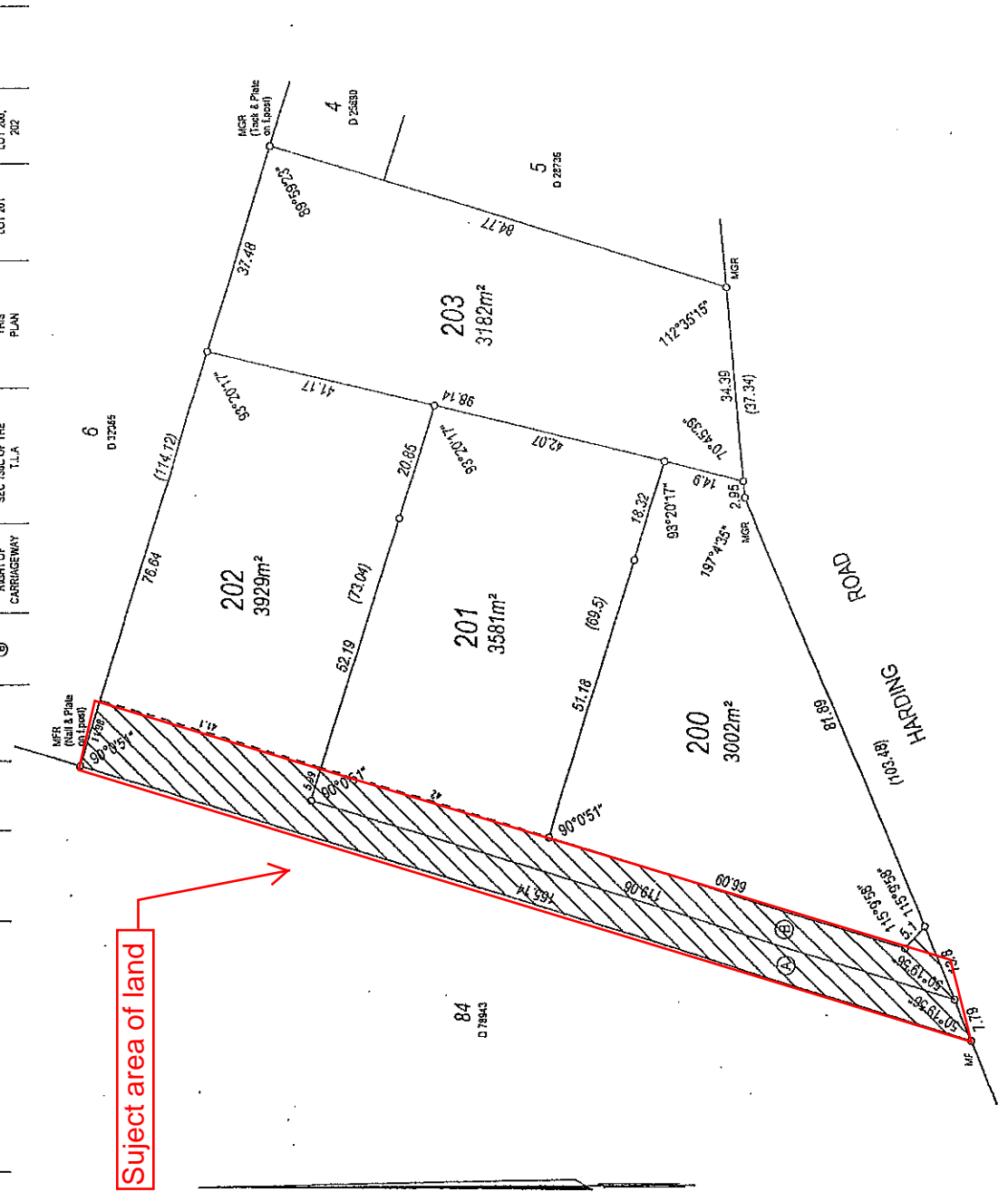


EDWER	AMENDMENT	BY	DATE

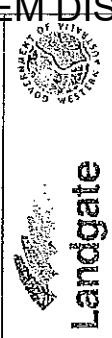
INTERESTS AND NOTIFICATIONS				
SUBJECT	PURPOSE	STATUTORY REFERENCE	ORIGIN	LAND BURDENED
(A)	RIGHT OF CARRIAGEWAY	SEC 136C OF THE T.L.A.	THIS PLAN	LOT 200, 201
(B)	RIGHT OF CARRIAGEWAY	SEC 136C OF THE T.L.A.	THIS PLAN	LOT 200, 201, 202

COMMENTS	
LOT 200, 201	
LOT 200, 201, 202	

Subject area of land



TYPE	FREEHOLD
PURPOSE	SUBDIVISION
PLAN OF	LOTS 201-203 & EASEMENTS
DISTRICT	PLANTAGENET
TOWNSITE	FILE
LOCAL AUTHORITY	CITY OF ALBANY
LOCALITY	ROBINSON
FORMER TENURE	ON
LOT 80 ON PLAN 3570 C/T 1306/584	INDEX EK25 (2) 09.03
SCALE (AT A2)	1:800
ALL DISTANCES ARE IN METRES	0 10 20 30 40
SURVEYOR'S CERTIFICATE - Real 54	J. KINNEAR
hereby certify that this plan is a correct representation of the land shown on the plan and that the measurements taken for the purpose of this plan and that it complies with the relevant provisions of the Survey Act 1988 and the relevant provisions of the Survey Regulations 1988.	hereby certify that this completed plan is a correct and accurate representation of the land shown on the plan and that the measurements taken for the purpose of this plan and that it complies with the relevant provisions of the Survey Act 1988 and the relevant provisions of the Survey Regulations 1988.
DATE	DATE
LOGGED	DATE
TYPE OF VALIDATION	DATE
PULL ADT	DATE
LEGAL COMPONENT	DATE
DOCKET	DATE
CERTIFIED CORRECT	DATE
1:5 C	DATE
F 5 C	DATE
SUBJECT TO	DATE
IN ORDER FOR DEALINGS	DATE
FOR INSPECTOR OF PLANS & SURVEYS	DATE
AUTHORIZED LAND OFFICER	DATE
APPROVED	DATE
INSPECTOR OF PLANS & SURVEYS	DATE
AUTHORIZED LAND OFFICER	DATE
DEPOSITED PLAN	DATE
SHEET 1 OF 1	VERSION 1



Western Australian Land Information Authority

JOHN KINNEAR & ASSOCIATES
Consulting Surveyors
224 STIRLING TERRACE
ALBANY WA 6171
PHONE (08) 9542 3553 FAX (08) 9542 1570
JKA REF 8666ANG

**Public Advertising of the Heritage Survey and Heritage List
Summary of Submissions**

	Heritage Property	Submission details	Comments	Recommendation
1	63 – 73 Spencer Street, Albany	<ul style="list-style-type: none"> State that they are disappointed that Council has cut down wooden guideposts and replaced it with modern thin steel versions. State that the street trees are not suitable for the historic nature of the street being foreign and cause daily nuisance. Don't support the new raw Zincalume roof being placed on the Town Hall. 	<ul style="list-style-type: none"> No comments on the place record form 	No changes required to the place record form.
2	96 Brunswick Road, Port Albany	<ul style="list-style-type: none"> A renovation has occurred (as per a planning approval) which is not reflected in the place record form. The REIWA advertisement is not a true record. Since then the rear of the house was demolished and a new bathroom/laundry are and alfresco added. My historic research shows that McKail was the owners prior to Frank Johnson rather than the Moir family. I would be interested to follow up. Research concluded that it was not a place of significance as there are no photo's in any historic publications. A harbour master 	<ul style="list-style-type: none"> Update place record form in line with building approval. Undertake further research on ownership and significance in sea trade and port affairs. 	Update place record form.

REPORT ITEM DIS219 REFERS

	Heritage Property	Submission details	Comments	Recommendation
		<p>rented the property for a period of time but there is no evidence that it was significant in sea trade and port affairs.</p> <ul style="list-style-type: none"> • Intent to maintain the heritage integrity of the home while making minor internal improvements. • Interested in further historic clarification. 		
3	208 Grey Street West, Albany	<ul style="list-style-type: none"> • The glassed in lower level is no longer used for accommodation but a workshop and storage area. As a dwelling, the house is effectively a single storey. 	<ul style="list-style-type: none"> • Update place record form by referring to a single storey with an undercroft under Use of Place. 	Update place record form.
4	Albany Golf Club, Golf Links Road	<ul style="list-style-type: none"> • Provide correct information on historical notes. 	<ul style="list-style-type: none"> • Update place record form with these corrections. 	Update place record form.
5	6 Finlay Street, Albany	<ul style="list-style-type: none"> • The residence is single storey at the front and has been extensively added to at the rear including another storey encompassing 2 bedrooms and a bathroom. 	<ul style="list-style-type: none"> • Update place record form by referring to a two storey residence under Use of Place. 	Update place record form.
6	61-63 Aberdeen Street, Albany	<ul style="list-style-type: none"> • History of building very interesting. • Correct present use of building. It has been the site of Steer Optometrist for many years, firstly Geoffrey Steer and now his daughter Alison Steer. 	<ul style="list-style-type: none"> • Update place record form by referring to optometrist. 	Update place record form.
7	Eyre and Wiley Monument, Allambie Park Cemetery, Walmsley	<ul style="list-style-type: none"> • The monument in Allambie Park is one of five that commemorate Edward John Eyre, Baxter and Wylie trek across Australia in 1841. 	<ul style="list-style-type: none"> • Update place record form with these additional historic notes. 	Update place record form.

REPORT ITEM DIS219 REFERS

	Heritage Property	Submission details	Comments	Recommendation
		<ul style="list-style-type: none"> Mention should be made in the historical notes relating to the Allambie Park monument that it is one of five monuments that trace Eyre and Wylie's trek across Western Australia. 		
8	Aboriginal Heritage Sites	<ul style="list-style-type: none"> Propose that additional heritage sites be added to the City's Heritage List. A four-year oral history project with Lynnette Knapp and her family members have revealed several culturally significant sites not currently listed. Some of these sites are vulnerable to accidental destruction and listing of these sites might afford improved protection and custodianship by the City of Albany. 	<ul style="list-style-type: none"> Adding additional Aboriginal Heritage Sites to the Heritage Survey and List are supported in principle. However, this will result in significant additional work and consultation processes. 	It is recommended that following the adoption of the Heritage Survey and Heritage List in its current form, the possibility to expand the survey and list to include more sites of Aboriginal significance be explored.
9	66 Brunswick Road, Albany	<ul style="list-style-type: none"> Wish to provide additional information on the place record form. 	<ul style="list-style-type: none"> Follow up email sent to request additional information prior to Council meeting. No response received. 	No action
10	Lot 1583 Princess Royal Drive, <i>Old Town Jetty</i>	<ul style="list-style-type: none"> Acknowledge the inclusion of the jetty in the Local Heritage Survey and that it has met the threshold for inclusion on the Heritage List. The jetty in place is not the original structure nor is it one of three later extensions built in late 1800's, 	<ul style="list-style-type: none"> Update place record form with correct information in regards to the extent of original fabric retained. 	<ul style="list-style-type: none"> Update place record form.

REPORT ITEM DIS219 REFERS

	Heritage Property	Submission details	Comments	Recommendation
		<p>although a number of piles remain in situ beneath it.</p> <ul style="list-style-type: none"> Constructed of new materials and timber, the jetty is only representative of the original structure and the City is requested to review the Place Record Form to ensure this is made clear in the interest of historical accuracy to avoid any confusion in the future, such as when jetty maintenance or repairs are required. Recognise that the jetty and seabed collectively have great heritage value and should be preserved. 		
11	14 Parade Street, Albany	<ul style="list-style-type: none"> Provide additional information for the place record form. Supports Heritage Listing and see themselves as custodians of the building. 	<ul style="list-style-type: none"> Update place record form with additional information as provided in the place record form. 	Update place record form.
12	250 Middleton Road, Mira Mar <i>Matthew Cull's House</i>	<ul style="list-style-type: none"> Support the property being included in the Heritage List. Provide additional information and corrections for the place record form. 	<ul style="list-style-type: none"> Update place record form with additional information/corrections. 	Update place record form.
13	10 Finlay Street, Albany	<ul style="list-style-type: none"> Pleased to hear that the property has met the threshold for the Heritage List. Provide corrections to the information contained in the place 	<ul style="list-style-type: none"> Update place record form with corrections provided. 	Update place record form.

REPORT ITEM DIS219 REFERS

	Heritage Property	Submission details	Comments	Recommendation
		record form in regard to the balustrading and bracketing of the front verandah.		
14	1596 Millbrook Road, King River <i>Millbrook House</i>	<ul style="list-style-type: none"> • Provide corrections to the physical description on the house. • Provide additional historic information. 	<ul style="list-style-type: none"> • Update place record form with corrections and historic information provided. 	Update place record form.
15	170 Middleton Road, Middleton Beach <i>Strawberry Hill</i>	<ul style="list-style-type: none"> • Provide correction to the place record form and updated photo's 	<ul style="list-style-type: none"> • Update place record form with corrections provided. 	Update place record form.
16	52 Frederick Street, Albany	<ul style="list-style-type: none"> • Object to the property being placed on the Heritage List • Wish for decisions to be placed on hold until further information is received on the structural integrity of the west wall of this heritage building. 	<ul style="list-style-type: none"> • Update place record form with additional data received. • The place is on the Heritage Survey 2000. • The place is on the current Heritage List under LPS1. 	<ul style="list-style-type: none"> • Update place record form: Adjust 'Rating and Assessment' table with regards to condition; add recent photo's; and include additional information in historical notes. • Retain on the Heritage List for the following reasons: <ul style="list-style-type: none"> ○ The place currently affords statutory heritage protection by its inclusion on the LPS1 Heritage List. ○ The heritage significance has been reassessed based on the additional information received and remains at 'Considerable'; ○ It meets the threshold to be included in the Heritage List; and ○ It is located near to other significant places and adjacent

REPORT ITEM DIS219 REFERS

	Heritage Property	Submission details	Comments	Recommendation
				to the Albany Co-operative Building which is on the State Register.
17	54-60 Duke Street, Albany	<ul style="list-style-type: none"> Provide correction and additional information to the place record form 	<ul style="list-style-type: none"> Update place record form with correction and additional information provided 	Update place record form
18	27 Rowley Street, Albany	<ul style="list-style-type: none"> Provide correction and additional information to the place record form 	<ul style="list-style-type: none"> Update place record form with correction and additional information provided 	Update place record form
19	18 Finlay Street, Albany	<ul style="list-style-type: none"> Correct address is 18B Finlay Street Provide corrections to the place record form Question 'rating and assessment table' of the house, particularly the condition and integrity scores The property when built had stumps that were put straight into the ground or on top of natural rock. The front portion of the house and front veranda have lean on them due to the age of the house. The front balustrade had deteriorated, and main support posts suffer with timber rot. There is a bathroom which is only 300mm from the boundary line. It is their intention to demolish the house and build a new house in the same position. 	<ul style="list-style-type: none"> Update place record form with additional information Re-assess significance and inclusion in the Heritage List Heritage Significance assessed as 'Considerable' and therefore met the threshold to be included in the Heritage List. The place is on the current Heritage Survey 2000 The place is not on the current Heritage List under LPS1. 	<ul style="list-style-type: none"> Update place record form Retain on Heritage List for the following reasons: <ul style="list-style-type: none"> The heritage significance is 'considerable' and the additional information provided in the submission has not altered the level of significance. The place has a relationship to both Rowley and Finlay Street. Places of Heritage Significance which are also on the Heritage List are located within close proximity to this property. Heritage Listing will allow Council more control on the character and form of any new development that may occur and ensure that sensitive redevelopment occurs.

REPORT ITEM DIS219 REFERS

	Heritage Property	Submission details	Comments	Recommendation
		<ul style="list-style-type: none"> Support inclusion on the Heritage Survey but object to it being placed on the Heritage List. 		
20	46 Rowley Street, Albany	<ul style="list-style-type: none"> Correct address is 18 Finlay Street. Provide corrections to the place record form. Question the 'rating and assessment table'. Its condition is average at best and integrity is not high. The front room of the house has foundations that are of local rock made with old style mortar (pre 1940) which will necessitate at some stage rebuilding. Support inclusion on the Heritage Survey but object to it being placed on the Heritage List. 	<ul style="list-style-type: none"> Undertake corrections to the place record form Heritage Significance assessed as 'Some/Moderate' and was included on the Heritage List due to its location within an area of Rowley and Finlay Street of which there are many places of heritage significance protected on the Heritage List. Given that the significance of the places is some/moderate, the place can be removed from the Heritage List. The place is on the current Heritage Survey 2000. The place is not on the current Heritage List under LPS1. 	<ul style="list-style-type: none"> Update place record form; Delete from Heritage List for the following reasons: <ul style="list-style-type: none"> It's heritage significance is 'some/moderate'; and The place is at the end of Rowley street heritage streetscape.
21	1207 Nanarup Road, Nanarup <i>Springmount</i>	<ul style="list-style-type: none"> Provide corrections in regards to reference to a guesthouse, hostel and tea room; reference to the tennis court and the name by which the property is known. Object to heritage listing based on owners' desire to continue farming on the property. The house is currently vacant and has 	<ul style="list-style-type: none"> Update place record form with information received. The place is on the current Heritage Survey 2000. The place is not on the current Heritage List under LPS1. 	<ul style="list-style-type: none"> Update place record form with correct historical information. Retain on the Heritage List for the following reasons: <ul style="list-style-type: none"> The place is a uniquely designed Federation Queen Anne homestead dwelling and was places on the Heritage Council WA Assessment Program in 2004.

REPORT ITEM DIS219 REFERS

	Heritage Property	Submission details	Comments	Recommendation
		deteriorated and not save to live in.		<ul style="list-style-type: none"> ○ The place has already been subject to planning requirements owing to its heritage values identified in the MHI 2000 and there is no change to its status. ○ Heritage Listing would not impact on the farming activities. ○ There is no change to the heritage significance.
22	86 Aberdeen Street, Albany	<ul style="list-style-type: none"> • Objects to heritage listing of the property as it has an adverse effect on the sale of the property. 	<ul style="list-style-type: none"> • The heritage significance of the place is 'some/moderate'. • Although 'some/moderate' significance does not meet the threshold for inclusion in the Heritage List, it was included as it forms part of a group of historic houses/buildings in Aberdeen Street built from 1880's to 1900's that have heritage value both individually and as part of a streetscape, comprising a complimentary mix of residential and institutional buildings. • There could be reconsideration of this place being included on the Heritage List as it has been assessed as Some/Moderate significance which is a borderline category. However, inclusion in the list was mainly in response to all 	<ul style="list-style-type: none"> • Retain on the Heritage List for the following reasons: <ul style="list-style-type: none"> ○ All places on Aberdeen Street are included on the Heritage List to guide future development and protect the Aberdeen Street heritage environment.

REPORT ITEM DIS219 REFERS

	Heritage Property	Submission details	Comments	Recommendation
			<p>places in Aberdeen Street being included in the list to guide future development and protect its heritage environment. The removal from the list cannot wholly be based on an economic argument raised by the owner.</p> <ul style="list-style-type: none"> • The place is on the current Heritage Survey 2000 • The place is not on the current Heritage List under LPS1 	
23	11 Parade Street, Albany	<ul style="list-style-type: none"> • Objects to heritage listing of the property on spiritual grounds due the passing away of a family member in the house. The listing of the house would have a severe impact on memories and future family visits. 	<ul style="list-style-type: none"> • The spiritual value of the place to owner is acknowledged and respected. • Heritage listing does not breach privacy, interfere in personal affairs or attachments to the house. Not interfere with spiritual connection and not disrespecting it. Heritage listing does not impact on the spiritual connection. • The heritage significance of the place is 'Considerable' and therefore meets the threshold for inclusion in the Heritage List. • The place is on the current Heritage Survey 2000. • The place is not on the current Heritage List under LPS1. 	<ul style="list-style-type: none"> • Retain on the Heritage List for the following reasons: <ul style="list-style-type: none"> ○ The place is a fine and well executed simple Federation bungalow residence that has maintained a high level authenticity. ○ It is one of the earliest extant houses in this southern end of Parade Street. ○ It is one of a group of houses/buildings in the historically important Parade Street that have heritage value both individually and as part of a streetscape.

REPORT ITEM DIS219 REFERS

	Heritage Property	Submission details	Comments	Recommendation
24	14 Rowley Street, Albany	<ul style="list-style-type: none"> • Suggest that the value of their home is more in regard to it being part of a cluster of similar buildings, and therefore the significance level would be 'some/moderate' rather than 'significant'. • It's value as a precinct is to some degree protected under a planning policy, which at some stage included guidelines in the area for development (old and new buildings) that to conserve the streetscape character of the precinct. • They are disappointed in the past that the guidelines were relaxed and development which were out of character with the street approved. • Protecting the value of old timber house relies on the City protecting the wider streetscape value and character, not just the 'listed' properties. They look forward to the City managing these issues for the benefit of the community's cultural assets. 	<ul style="list-style-type: none"> • Based on information contained in the place record for, the level of significance can be noted as 'some/moderate'. • Note comment on the protection of the wider streetscape value. The City is reviewing its planning policies and this will be considered during the review process. 	<ul style="list-style-type: none"> • Adjust heritage significance to 'some/moderate' and retain on the Heritage List as part of Rowley Street precinct.

Street Name	Street No/Loc	Locality	Assess No.	Name of Place	Level of Significance	Significant Interior	New listing
Aberdeen St	15-21	Albany	A149296	House	Considerable	tbc	Yes
Aberdeen St	23-33	Albany	A149179	Albany Club	Exceptional - Registered	Yes	
Aberdeen St	24	Albany	A149462	House	Considerable	Yes	Yes
Aberdeen St	43	Albany	A149034	House	Some/Moderate	No	Yes
Aberdeen St	47	Albany	A148983	House	Some/Moderate	No	Yes
Aberdeen St	61-63	Albany	A148870	House	Some/Moderate	No	Yes
Aberdeen St	65-67	Albany	A148816	House	Some/Moderate	No	Yes
Aberdeen St	78-84	Albany	A149525	House	Considerable	Yes	Yes
Aberdeen St	80-86	Albany	A149575	House	Some/Moderate	No	Yes
Aberdeen St	96	Albany	A149719	<i>Wheeldon's Cottage</i>	Considerable	Yes	
Aberdeen St	99 -101	Albany	A148618	<i>Oddfellows Hall</i>	Considerable	Yes	Yes
Aberdeen St	120-160	Albany	A74174	St Joseph's Catholic Church Group	Exceptional - Registered	Yes	
Aberdeen St	146	Albany	A74110	St Joseph's Convent (Refer St Joseph's Catholic Church Group)	Exceptional - Registered	Yes	
Aberdeen St	154-160	Albany	A74075	St Joseph's Lodge (Refer St Joseph's Catholic Church Group)	Exceptional - Registered	Yes	
Albany Hwy	35615	Drome	A64802	'Sigint' (Signals intelligence radio monitoring system)	Considerable	Yes	Yes
Albany Hwy	Lot 6981	Drome	A185426	RAAF Operation and Power Bunker	Considerable	Yes	Yes
Albany Hwy	51	Albany	A	House	Some/Moderate	tbc	Yes
Albany Hwy	55	Albany	A85137	House	Some/Moderate	tbc	Yes
Albany Hwy	70-88	Centennial Park	A239231	Albany Primary School	Exceptional - Registered	Yes	Yes
Albany Hwy	75	Mt Melville	A85321	House	Considerable	Yes	
Albany Hwy	77	Mt Melville	A85349	House	Considerable	tbc - P	
Albany Hwy	81	Mt Melville	A85371	House	Considerable	tbc - P	
Albany Hwy	85-87	Mt Melville	A85399	House	Considerable	tbc - P	Yes
Albany Hwy	135	Mt Melville	A85632	House	Some/Moderate	tbc	Yes
Albany Hwy	137	Mt Melville	A85682	House	Some/Moderate	tbc	Yes

Street Name	Street No/Loc	Locality	Assess No.	Name of Place	Level of Significance	Significant Interior	New listing
Alexander St	10	Centennial Park	A89991	<i>The Castle</i>	Considerable	No	
Alexander St	11	Centennial Park	A89595	<i>Avrilton</i>	Considerable	tbc - P	Yes
Apex Dve	Res 27116	Mt Clarence	A81797 A139613 A234033	Mt Clarence WWI Monuments	Exceptional - Registered	n/a	
Barameda Rd	Res 28277 & 50506	Oyster Harbour	A238239	Oyster Harbour Fish Traps	Exceptional	n/a	Yes
Breaksea Island		King George Sound		Breaksea Island and Lighthouse	Exceptional - Registered	Yes	Yes
Brunswick Rd	36-38	Albany	A133972	Police Inspectors Quarters	Considerable	Yes	Yes
Brunswick Rd	66	Port Albany	A134514	<i>Austin House</i>	Some/Moderate	No	Yes
Brunswick Rd	68-70	Port Albany	A134582	<i>Brackenhurst</i>	Considerable	Yes	
Brunswick Rd	78-80	Port Albany	A134758	House	Considerable	tbc - P	
Brunswick Rd	96	Albany	A135057	House	Considerable	Yes	Yes
Brunswick Rd	120	Albany	A135859	<i>Lawley House</i>	Considerable	Yes	Yes
Brunswick Rd	133	Albany	A74368	Lawley Park and Lawley Park Tennis Courts and Spencer Memorial	Considerable	n/a	
Brunswick Rd	136	Albany	A136324	<i>Parkville</i>	Considerable	Yes	Yes
Brunswick Rd	137	Albany	A162624	House	Considerable	tbc	Yes
Brunswick Rd	138	Albany	A136374	<i>Ivanhoe</i>	Considerable	Yes	Yes
Brunswick Rd	Lot 1575	Port Albany	A220565	Mass Rocks	Considerable	n/a	Yes
Burgoyne Rd	46-92	Albany	A139730	Balston Gardens	Some/Moderate	n/a	
Burgoyne Rd	57-59	Port Albany	A139023	Lookout Rocks	Considerable	n/a	Yes
Burgoyne Rd	120	Albany	A140216	<i>Whispering Pines</i>	Some/Moderate	tbc - P	
Burgoyne Rd	140	Albany	A140464	House	Considerable	tbc - P	
Burt St	55-59	Mt Clarence	A126232	<i>The Priory (Refer Old Surrey)</i>	Exceptional	Yes	Yes
Campbell Rd	1	Mt Clarence	A234768	Albany Senior High School	Exceptional	Yes	Yes
Cliff Way	6	Albany	A105286	Hillside	Exceptional - Registered	Yes	

Street Name	Street No/Loc	Locality	Assess No.	Name of Place	Level of Significance	Significant Interior	New listing
Collie St	1	Albany	A97142	Lockup & Keeper's Quarters (Refer Old Courthouse)	Exceptional - Registered	Yes	Yes
Collie St	37-39	Albany	A107082	<i>Kia Ora</i>	Considerable	tbc - P	Yes
Collie St	41-47	Albany	A231712	House	Considerable	No	Yes
Collie St	49-51	Albany	A106981	<i>Gilbert's Cottage</i>	Considerable	tbc - P	Yes
Collie St	71	Albany	A	Albany Fire Station and Officer's House	Exceptional - Registered	Yes	Yes
Collie St	120	Albany		Headmaster's Quarters (Refer Albany State School)	Exceptional - Registered	Yes	
Crossman St	37	Mt Melville	A89644	House	Considerable	tbc	Yes
Cuthbert St		Albany		Cuthbert Street Precinct	Considerable	n/a	Yes
Cuthbert St	5	Albany	A107375	House	Considerable	tbc	Yes
Cuthbert St	7 to 9	Albany	A107393	Semi-detached Houses	Considerable	tbc	Yes
Cuthbert St	21	Albany	A107325	House	Considerable	tbc	Yes
Cuthbert St	23	Albany	A107280	House	Considerable	tbc	Yes
Cuthbert St	26	Albany	A107163	House	Considerable	tbc	Yes
Cuthbert St	27	Albany	A107262	House	Considerable	tbc	Yes
Cuthbert St	28-32	Albany	A107195	House	Considerable	tbc	Yes
Davies Rd	61	Kalgan	A67222	<i>Gomm Cottage</i>	Considerable	tbc	Yes
Drew St	24-32	Albany	A	Oak Trees	Considerable	n/a	
Duke St	1	Albany	A186676	Sergeant's Quarters (Refer Old Courthouse)	Exceptional - Registered	Yes	Yes
Duke St	10	Albany	A107096	<i>Sherratt House</i>	Considerable	Yes	Yes
Duke St	12 to 40	Albany	A100010	Wesley Church, Hall and Manse	Exceptional - Registered	Yes	
Duke St	33-37	Albany	A97093	Patrick Taylor Cottage	Exceptional - Registered	Yes	
Duke St	54-60	Albany	A99948	Wollaston House	Exceptional - Registered	Yes	
Earl St	35	Albany	A140937	Seventh Day Adventist Church	Considerable	Yes	Yes
Earl St	50-60	Albany	A142751	Earl of Spencer Inn	Exceptional	Yes	
Elleker-Grasmere Rd	546	Elleker	A52932	<i>Burleigh</i>	Considerable	Yes	Yes

Street Name	Street No/Loc	Locality	Assess No.	Name of Place	Level of Significance	Significant Interior	New listing
Elleker-Grasmere Rd	217	Elleker	A9440	House	Considerable	tbc - P	Yes
Festing St	10	Albany	A140022	<i>Lavender Cottage</i>	Considerable	Yes	Yes
Festing St	14	Albany	A99461	House	Considerable	tbc	Yes
Festing St	84-98	Mt Melville	A81585	Albany Fish Ponds	Exceptional - Registered	n/a	Yes
Finlay St	6	Albany	A156657	House	Considerable	tbc - P	Yes
Finlay St	10	Albany	A207042	<i>Dunrossness Cottage</i>	Considerable	tbc - P	Yes
Finlay St	16	Albany	A156819	House	Some/Moderate	No	Yes
Finlay St	18	Albany	A154158	House	Considerable	tbc	Yes
Flinders Pde	Res 26149	Middleton Beach	A136932	Ellen Cove Jetty and Norfolk Island Pine Trees	Considerable	n/a	Yes
Flinders Pde	37	Middleton Beach	A90382	CWA Seaside Flats	Considerable	Yes	Yes
Forts Rd	106	Mt Clarence	A	The Albany Forts (Mt Adelaide)	Exceptional - Registered	Yes	
Frederick St	27	Albany	A136635	<i>Mongup</i>	Some/Moderate	tbc - P	Yes
Frederick St	30	Albany	A200642	House	Some/Moderate	No	Yes
Frederick St	32	Albany	A200638	House	Some/Moderate	No	Yes
Frederick St	34	Albany	A137542	<i>Oakview Cottage</i>	Some/Moderate	tbc	Yes
Frederick St	36	Albany	A143636	National Australia Bank fmr	Considerable	Yes	
Frederick St	44	Albany	A137623	Albany Co-operative Society Building	Exceptional - Registered	Yes	Yes
Frederick St	52	Albany	A137704	House	Considerable	No	Yes
Frederick St	58-62	Albany	A137740	House	Considerable	tbc	Yes
Frederick St	61	Albany	A158728	Moir Warehouse	Considerable	Yes	
Frenchman Bay Rd		Albany		Frenchman Bay Whaling Station ruin	Exceptional - Registered	n/a	Yes
Vancouver St	Res 21337	Frenchman Bay	A234493	Vancouver Spring and Dam (Refer Frenchman Bay Whaling Station ruin)	Exceptional - Registered	n/a	Yes
Golflinks Rd		Albany	A145757	Albany Golf Course	Exceptional - Registered	n/a	Yes
Green Island	A24808	Oyster Harbour	A237336	Green Island	Considerable	n/a	

Street Name	Street No/Loc	Locality	Assess No.	Name of Place	Level of Significance	Significant Interior	New listing
Grey St	60	Albany	A145707	House	Considerable	tbc	
Grey St	66	Albany	A145743	Salvation Army Hall	Considerable	Yes	Yes
Grey St	122	Albany	A104446	Peruvian Pepper tree	Considerable	n/a	Yes
Grey St	148	Albany	A104347	House	Considerable	tbc	
Grey St	153	Albany	A102145	House	Some/Moderate	tbc	
Grey St	170	Albany	A104086	House	Considerable	Yes	
Grey St	172	Albany	A104036	House	Considerable	tbc	
Grey St	176	Albany	A103999	House	Considerable	tbc	
Grey St	178	Albany	A103953	House	Considerable	tbc	Yes
Grey St	183	Albany	A102474	House	Considerable	tbc - P	Yes
Grey St	184	Albany	A103917	The Rocks	Exceptional - Registered	Yes	
Grey St	194	Albany	A103822	House	Considerable	tbc	Yes
Grey St	198	Albany	A103787	<i>McKenzie House</i>	Considerable	tbc -P	
Grey St	206	Albany	A103737	House	Exceptional - Registered	Yes	Yes
Grey St	208	Albany	A103705	House	Considerable	tbc	Yes
Hanrahan Rd	76 & 877	Mt Melville	A226729	World WarII U.S. Navy Fuel Tanks	Considerable	n/a	Yes
Hare St	162	Albany	A85781	Albany Snake Run	Exceptional - Registered	n/a	Yes
Wheeldon Rd	Lot 6981	Upper Kalgan	A3858	<i>Maitland</i>	Considerable	Yes	Yes
Homestead Rd	681	Manypeaks	A4175	<i>The Homestead</i>	Considerable	tbc	Yes
Hotchin Ave	5 to 9	Albany	A110071	Melville House	Exceptional - Registered	Yes	
Hunwick Sth Rd	Lot 244	Torbay	A66446	Torbay Hall	Considerable	tbc - P	Yes
Lake Seppings Dve	Res 22058, 1299, 29187, 23775	Seppings		Lake Seppings	Exceptional	n/a	
Lower Denmark Rd	Loc 7474	Bornholm	A65214	Bornholm-Kronkup District Hall	Considerable	tbc - P	Yes
Lower King Rd	241 (Loc 5659)	Walmsley	A14807	Eyre and Wylie Memorial - Allambie Park Cemetery	Considerable	n/a	Yes
Melville St	41	Albany	A109630	House	Considerable	tbc	
Mermaid Ave	20	Emu Point	A153746	House	Considerable	No	Yes
Middleton Rd	165 (13)	Mt Clarence	A142616	<i>The Gums</i>	Considerable	tbc	Yes

Street Name	Street No/Loc	Locality	Assess No.	Name of Place	Level of Significance	Significant Interior	New listing
Middleton Rd	168-170	Mira Mar	A136784 A136829 A136851 A50821	Strawberry Hill Farm (Barmup)	Exceptional - Registered	Yes	
Middleton Rd	176	Mira Mar	A136900	Tree	Considerable	n/a	Yes
Middleton Rd	215	Mt Clarence	A97502	House	Considerable	tbc - P	Yes
Middleton Rd	250	Mira Mar	A97958	Matthew Cull's House	Exceptional - Registered	Yes	
Middleton Rd	263-275	Mt Clarence	A158449	Memorial Park Cemetery	Exceptional - Registered	n/a	Yes
Middleton Rd	277-291	Mt Clarence	A158403	Bob Thomson Gardens	Considerable	n/a	
Middleton Rd	298	Centennial Park	A98621	Dog Rock	Exceptional	n/a	
Mill St	5	Albany	A215225	House (Refer Worsted and Woollen Mills)	Considerable	Yes	Yes
Mill St	9	Albany	A215225	House (Refer Worsted and Woollen Mills)	Considerable	Yes	Yes
Mill St	11 to 13	Albany	A215225	Worsted and Woollen Mills	Exceptional	n/a	Yes
Millbrook Rd	1454	King River	A50942	<i>Greendale</i>	Considerable	tbc	Yes
Millbrook Rd	1520	King River	A6037	King River Hall	Exceptional - Registered	Yes	Yes
Millbrook Rd	1596	King River	A5604	<i>Happy Days</i>	Exceptional	tbc	Yes
Mount St	4 to 6	Port Albany	A157451	House	Considerable	tbc	
Myola Dve	39	Kalgan	A235693	<i>Douglas House</i>	Considerable	No	Yes
Nambucca Rise	PT 522	Lower Kalgan		Scarred Tree - Oyster Harbour	Exceptional	n/a	Yes
Nanarup Rd	Lot 1 Loc 3942	Nanarup	A2662	<i>Springmount</i>	Exceptional	tbc - P	Yes
Nanarup Rd	Lot 184	Kalgan	A63012	<i>Rainscourt</i>	Considerable	tbc	Yes
Nanarup Rd		Kalgan		Lower Kalgan River Bridge/Jetty Group	Exceptional - Registered	n/a	Yes
North Rd	Lot 23	Elleker	A11572	House	Considerable	tbc	Yes
Norwood Rd	Loc 482, 2356	King River	A4800	<i>Balgownie</i>	Considerable	tbc	Yes
Parade St	adj no. 11	Albany		Central Datum Point and Military Station Flagstaff	Exceptional	n/a	Yes

Street Name	Street No/Loc	Locality	Assess No.	Name of Place	Level of Significance	Significant Interior	New listing
Parade St	1	Albany	A108688	Mouchemore's Cottage and Net Shed	Exceptional - Registered	Yes	Yes
Parade St (Residency Rd)	2 to 4	Albany	A96366	Residency Museum	Exceptional - Registered	Yes	
Parade St	4	Albany	A96384	Old Albany Gaol	Exceptional - Registered	Yes	
Parade St	9	Albany	A108606	<i>Roseneath</i>	Considerable	tbc	Yes
Parade St	11	Albany	A108561	House	Considerable	tbc	Yes
Parade St	14	Albany	A107474	House	Considerable	Yes	Yes
Parade St	15	Albany	A108507	House	Some/Moderate	tbc	Yes
Parade St	23-35	Albany	A161523	Foundation Park	Exceptional	n/a	Yes
Parade St	28	Albany	A107569	House	Some/Moderate	tbc	Yes
Parker St	Res 25382	Lockyer	A124337	Apex Park - Lake Weerlara	Exceptional	n/a	
Peels Pl	2 to 14	Albany	A136441 A136504	Moirs Buildings	Considerable	Yes	Yes
Peels Pl	Lot 831	Albany	A234461	Fallen Soldiers' Memorial	Considerable	n/a	Yes
Point King	Res 27068	Mt Clarence	A136928	Point King Lighthouse	Exceptional - Registered	Yes	Yes
Nanarup Rd	19	Lower King	A170578	<i>Prideaux Cottage</i>	Considerable	Yes	Yes
Princess Royal Dve	Res 40635	Albany	A130471	Albany Town Jetty (incl. Deepwater Jetty)	Exceptional - Registered	n/a	Yes
Princess Royal Dve	Pt Lot 1576	Albany	A175154	Albany Pilot Station	Exceptional - Registered	Yes	Yes
Proudlove Pde	45-77	Albany	A140428	Railway Station and Bond Store	Exceptional - Registered	Yes	Yes
Proudlove Pde	50-54	Albany	A140315	RSL Memorial Gardens	Exceptional	n/a	Yes
Proudlove Pde	22-32	Albany	A157447	Dalgety's Wool Warehouse	Considerable	Yes	Yes
Quaranup Rd	Loc 7150	Frenchman Bay	A65309	Whaling Cove ruins	Exceptional - Registered	n/a	Yes
Quaranup Rd	Loc 7150	Frenchman Bay	A65309	Quaranup Complex	Exceptional - Registered	Yes	Yes
Rowley St	2	Albany	A153124	House	Considerable	tbc -P	Yes
Rowley St	4	Albany	A153174	House	Considerable	tbc	Yes
Rowley St	10	Albany	A	House	Considerable	tbc	Yes
Rowley St	12	Albany	A153485	House	Considerable	tbc	Yes
Rowley St	14	Albany	A	House	Considerable	tbc	Yes

Street Name	Street No/Loc	Locality	Assess No.	Name of Place	Level of Significance	Significant Interior	New listing
Rowley St	25	Albany	A152695	House	Exceptional - Registered	Yes	
Rowley St	27	Albany	A152631	House	Considerable	Yes	Yes
Rowley St	33	Albany	A152528	House	Considerable	tbc - P	
Rowley St	37	Albany	A	House	Some/Moderate	tbc	Yes
Rowley St	39	Albany	A152348	House	Some/Moderate	tbc	
Rowley St	41	Albany	A	<i>Merri Fields</i>	Considerable	tbc	Yes
Rowley St	46	Albany	A154158	House	Some/Moderate	No	Yes
Serpentine Rd East	Res 27460	Albany		Waggon Rock	Some/Moderate	n/a	
Serpentine Rd	106-116	Albany	A81981	<i>Pymont House</i>	Exceptional - Registered	Yes	
Serpentine Rd	117-121	Albany	A106599	Albany State School Group	Exceptional - Registered	Yes	
Serpentine Rd	142	Albany	A160107	<i>Merfield House</i>	Considerable	tbc - P	
Serpentine Rd	148-150	Albany	A82294	<i>Somerville</i>	Considerable	Yes	Yes
Serpentine Rd	154	Mt Melville	A82410	House	Considerable	Yes	Yes
Serpentine Rd	172	Mt Melville	A82618	<i>Camfield House</i>	Exceptional - Registered	Yes	
Serpentine Rd	176	Mt Melville	A89351	House	Some/Moderate	No	
Serpentine Rd	197	Mt Melville	A113059	House	Cosiderable	Yes	
Serpentine and Hanrahan Rd		Mt Melville		Mt Melville (incl. Mokare Park and Lion St Reserve)	Exceptional	n/a	
Seymour St	24-26	Mira Mar	A142602	<i>Hawthorndene</i>	Exceptional - Registered	Yes	
Seymour St	43 Res 23769	Mira Mar	A143983	Sir Richard and Lady Spencer's Grave	Exceptional - Registered	n/a	
Spencer St	28	Albany	A150669	House (incl. Stirling Tce Precinct)	Exceptional - Registered (Little)	No	Yes
Spencer St	32	Albany	A150718	House (incl. Stirling Tce Precinct)	Exceptional - Registered (Little)	No	Yes
Spencer St	36-40	Albany	A239899 A239902 A239885	Reeves Timber Yard and Hardware	Considerable	Yes	Yes
Spencer St	58-60	Albany	A151134	Albany Masonic Hall	Exceptional - Registered	Yes	
Spencer St	62	Albany	A151198	House	Considerable	tbc - P	

Street Name	Street No/Loc	Locality	Assess No.	Name of Place	Level of Significance	Significant Interior	New listing
Spencer St	64	Albany	A151265	House	Exceptional	Yes	
Spencer St	63-73	Albany	A150411	Houses	Considerable	Yes	
Spencer St	88	Albany	A151986	House	Considerable	tbc	Yes
Spencer St	89	Albany	A163842	<i>Cossie's Cottage</i>	Considerable	tbc	Yes
Spencer St	93	Albany	A150308	House	Considerable	tbc	Yes
Spencer St	96-106	Albany	A152154	Former Army Drill Hall	Considerable	Yes	Yes
Station St	29	Young's Siding	A	Young's Siding Hall	Considerable	tbc-P	Yes
Stirling Tce	22	Albany	A158368 A158336	House	Considerable	tbc - P	
Stirling Tce	24	Albany	A158417	<i>Kent House</i>	Some/Moderate	tbc	
Stirling Tce	26	Albany	A158453	<i>Belburne</i>	Some/Moderate	tbc	
Stirling Tce	28-30	Albany	A158499	Norman House and Magnolia Tree	Considerable	Yes	Yes
Stirling Tce (rear)	28-30	Albany	A158499	Cheyne's Stable, Outbuilding & Oak Tree	Exceptional	Yes	
Stirling Tce (portion Spencer St)	32-190 (28-32)	Albany		Stirling Terrace Precinct	Exceptional - Registered	Yes	
Stirling Tce	32	Albany	A	House (incl. Stirling Tce Precinct)	Exceptional - Registered (Little)	No	Yes
Stirling Tce	33-39	Albany	A157659 A157695 A157730 A157762 A157807 A157843	Old Albany Post Office	Exceptional - Registered (Considerable)	Yes	
Stirling Tce	34-50	Albany	A158601	Everett's Corner	Exceptional - Registered (Some/Moderate)	Yes	
Stirling Tce	34-50, 42, 46 and 48	Albany	A158601	Argyle House	Exceptional - Registered (Some/Moderate)	Yes	
Stirling Tce	52-58	Albany	A158796	Edinburgh House	Exceptional - Registered (Considerable)	Yes	
Stirling Tce	52-58	Albany	A158796	Glasgow House	Exceptional - Registered (Considerable)	Yes	

Street Name	Street No/Loc	Locality	Assess No.	Name of Place	Level of Significance	Significant Interior	New listing
Stirling Tce	60-70	Albany	A158728	Royal George Hotel	Exceptional - Registered (Considerable)	Yes	
Stirling Tce	53-143	Albany	A157609	Queen's Jubilee Park and Rotunda	Exceptional - Registered (Considerable)	n/a	
Stirling Tce	72-80	Albany	A152564	White Star Hotel	Exceptional - Registered (Some/Moderate)	Yes	
Stirling Tce	82-84	Albany	A158912	J McKail & Co.	Exceptional - Registered (Considerable)	Yes	
Stirling Tce	86-94	Albany	A158976	National Bank	Exceptional - Registered (Considerable)	Yes	
Stirling Tce	96-102	Albany	A159027	Edward Barnett & Co. Building	Exceptional - Registered (Some/Moderate)	Yes	
Stirling Tce	104-106	Albany	A159077	Norman Brothers	Exceptional - Registered (Considerable)	Yes	
Stirling Tce	108-110	Albany	A159144	Sandover & Co.	Exceptional - Registered (Considerable)	Yes	
Stirling Tce	112-140	Albany	A74057	Drew Robinson & Co.	Exceptional - Registered (Considerable)	Yes	
Stirling Tce	144	Albany	A74138	The Western Australian Bank	Exceptional - Registered (Considerable)	Yes	
Stirling Tce	146-152	Albany	A74192	Empire Building	Exceptional - Registered (Considerable)	Yes	
Stirling Tce	160-162	Albany	A97287	London Hotel	Exceptional - Registered (Considerable)	Yes	
Stirling Tce	Res 19464	Albany	A97368	Taxi Rank and Women's Rest Rooms	Exceptional - Registered (Considerable)	Yes	
Stirling Tce	164-166	Albany	A163824	Commercial Building	Exceptional - Registered (Some/Moderate)	No	Yes
Stirling Tce	168-180	Albany	A163838	R.Bell and Co	Exceptional - Registered (Considerable)	Yes	Yes
Stirling Tce	184-190	Albany	A97237	Albany Court House Complex	Exceptional - Registered (Considerable)	Yes	
Stirling Tce	204-208	Albany	A97142	Kookas	Exceptional - Registered	Yes	Yes
Stirling Tce	244	Albany	A96974	Albany Roads Board Building	Some/Moderate	Yes	Yes
Symers St	4	Mira Mar	A95661	House	Considerable	tbc	Yes

Street Name	Street No/Loc	Locality	Assess No.	Name of Place	Level of Significance	Significant Interior	New listing
Tassell St	Res 24409	Mira Mar	A	Bluff Rock	Considerable	n/a	
Thomas St	5 to 11	Mt Clarence	A153881	<i>Old Surrey House and The Priory Group</i>	Exceptional	Yes	Yes
Vancouver St	4	Albany	A176007	Fire Officer's House	Exceptional - Registered	Yes	Yes
Vancouver St	6	Albany	A101981	House	Considerable	tbc	Yes
Vancouver St	8	Albany		House	Considerable	tbc	Yes
Vancouver St	10	Albany	A101927	House	Considerable	tbc	
Vancouver St	12	Albany	A101882	House	Considerable	tbc	Yes
Vancouver St	24-26	Albany	A101864	House	Considerable	tbc	Yes
Vancouver St	27	Albany	A100092	House	Considerable	tbc	Yes
Vancouver St	28	Albany	A101814	<i>Aldersyde</i>	Considerable	tbc - P	
Vancouver St	36	Albany	A101729	<i>Bangor House</i>	Exceptional	Yes	
Vancouver St	42	Albany	A101701	Garryowen	Exceptional - Registered	Yes	
Vancouver St	65	Albany	A	Berryman's Store	Considerable	Yes	Yes
Vancouver St	68	Albany	A100795	House	Considerable	tbc	Yes
Vancouver St	72	Albany	A	House	Some/Moderate	No	Yes
Vancouver St	74	Albany	A100745	House	Some/Moderate	tbc	Yes
Vancouver St	76	Albany	A	<i>Celurca</i>	Considerable	tbc	Yes
Vancouver St	77-87	Albany	A100402	Albany Cottage Hospital (VAC)	Exceptional - Registered	Yes	
Vancouver St	80	Albany	A100664	House	Some/Moderate	tbc	Yes
Vancouver St	82	Albany	A100632	<i>Stratford Villa</i>	Considerable	tbc - P	
Cheyne Rd	Lot 7705	Cheyne	A239029	Sealers' Oven	Exceptional - Registered	n/a	Yes
Whaling Station Rd	Loc 7620	Frenchman Bay	A162430	Cheyne Beach Whaling Station	Exceptional - Registered	Yes	Yes
Wheeldon Rd		Kalgan	S00400	Fishtraps – Kalgan River	Exceptional	n/a	Yes
Willyung Rd	Loc 401 Lot 6	King River	A168838	<i>Pendeen Homestead</i>	Considerable	Yes	Yes
Willyung Rd	Lot 13	Willyung	A5456	Willyung Cottage and stables	Exceptional	Yes	Yes
Pony Club Rd	50	Willyung	A176192	Ballymena	Exceptional - Registered	Yes	Yes
Wylie Cres	1	Middleton Beach	A89252	<i>The White House</i>	Considerable	Yes	Yes
York St		Albany	A	Hordern's Monument	Considerable	n/a	Yes

Street Name	Street No/Loc	Locality	Assess No.	Name of Place	Level of Significance	Significant Interior	New listing
York St	119-125	Albany	A106111	Albany House	Exceptional - Registered	Yes	
York St	130-132	Albany	A148442	St Albans Buildings	Considerable	Yes	Yes
York St	135	Albany	A164010	Law Offices	Exceptional - Registered	Yes	
York St	137-139	Albany	A106161	Treasure's Building	Considerable	Yes	
York St	146	Albany	A148145	The Spot Cash Draper	Considerable	Yes	Yes
York St (Rear)	148-154	Albany	A148082	<i>Baesjou Cottage</i>	Considerable	Yes	Yes
York St	149-163	Albany	A106238	St John's Church Group	Exceptional - Registered	Yes	
York St	165	Albany	A106323	Albany Advertiser and Printing Works	Considerable	Yes	Yes
York St	168-174	Albany	A147846	Scots Church	Exceptional - Registered	Yes	
York St	194-208	Albany	A143898	Premier Hotel	Considerable	tbc	Yes
York St	217	Albany	A106490	Albany Town Hall	Exceptional - Registered	Yes	
York St	239-259	Albany	A106616	Alison Hartman Gardens/Significant Trees <i>(Refer Albany State School)</i>	Exceptional - Registered	n/a	Yes
York St	244-248	Albany	A146763	Albany Hotel	Considerable	Yes	Yes

Street Name	Street No/Loc	Locality	Assess No.	Name of Place	Date of Construction	Level of Significance	New Entry
Aberdeen St	15-21	Albany	A149296	House	c1886	Considerable	Yes
Aberdeen St	23-33	Albany	A149179	Albany Club	1894	Exceptional-Registered	
Aberdeen St	24	Albany	A149462	House	c1888	Considerable	
Aberdeen St	43	Albany	A149034	House	c1890	Considerable	
Aberdeen St	47	Albany	A148983	House	c1890	Some/Moderate	
Aberdeen St	61-63	Albany	A148870	House	c1890s	Considerable	
Aberdeen St	65-67	Albany	A148816	House	c1890s	Considerable	
Aberdeen St	78-84	Albany	A149525	House	c1890s	Considerable	
Aberdeen St	80-86	Albany	A149575	House	c1880s-90s	Some/Moderate	Yes
Aberdeen St	96	Albany	A149719	<i>Wheeldon's Cottage</i>	c1890s	Considerable	
Aberdeen St	99 -101	Albany	A148618	<i>Independent Order of Oddfellows Hall</i>	1891	Considerable	
Aberdeen St	120-160	Albany	A74174 A74110 A74075	St Joseph's Catholic Church Group	1877-1939	Exceptional-Registered	
Aberdeen St	146	Albany	A74110	St Joseph's Convent (Refer St Joseph's Catholic Church Group)	1881/1898	Exceptional-Registered	
Aberdeen St	154-160	Albany	A74075	St Joseph's Lodge (Refer St Joseph's Catholic Church Group)	c1894/1919	Exceptional-Registered	
Albany Hwy	35615	Drome	A64802	'Sigint' (Signals intelligence radio monitoring system)	c1942	Considerable	
Albany Hwy	Lot 6981	Drome	A185426	RAAF Operation and Power Bunker	c1940	Considerable	Yes
Albany Hwy	51	Albany	A	House	c1910	Some/Moderate	Yes
Albany Hwy	55	Albany	A85137	House	c1900	Some/Moderate	
Albany Hwy	70-88	Centennial Park	A239231	Albany Primary School	1915	Exceptional-Registered	
Albany Hwy	75	Mt Melville	A85321	House	c1900	Considerable	
Albany Hwy	77	Mt Melville	A85349	House	c1900	Considerable	
Albany Hwy	81	Mt Melville	A85371	House	c1900	Considerable	
Albany Hwy	85-87	Mt Melville	A85399	House	c1900	Considerable	
Albany Hwy	135	Mt Melville	A85632	House	c1880	Some/Moderate	

Street Name	Street No/Loc	Locality	Assess No.	Name of Place	Date of Construction	Level of Significance	New Entry
Albany Hwy	137	Mt Melville	A85682	House	c1880	Some/Moderate	
Albany Hwy	139	Mt Melville	A	House	c1910	Some/Moderate	Yes
Alexander St	10	Centennial Park	A89991	<i>The Castle</i>	c1870s	Considerable	
Alexander St	11	Centennial Park	A89595	<i>Avrilton</i>	c1890	Considerable	
Apex Dve	Res 27116	Mt Clarence	A81797 A139613 A234033	Mt Clarence WWI Monuments	1932/1964	Exceptional-Registered	
Barameda Rd	Res 28277 & 50506	Oyster Harbour	A238239	Oyster Harbour Fish Traps		Exceptional	
Brassey St	19-21	Elleker	A66347	Elleker Hall	1920	Some/Moderate	
Breaksea Island	Res 271614	King George Sound		Breaksea Island and Lighthouse	1858-1902	Exceptional-Registered	Yes
Bridges St	14	Albany	A156972	House	-	Little	Yes
Bridges St	16	Albany	A157019	House	-	Some/Moderate	Yes
Brunswick Rd	36-38	Albany	A133972	Police Inspectors Quarters	c1885	Considerable	Yes
Brunswick Rd	66	Port Albany	A134514	<i>Austin House</i>	c1921	Some/Moderate	
Brunswick Rd	68-70	Port Albany	A134582	<i>Brackenhurst</i>	1881	Considerable	
Brunswick Rd	78-80	Port Albany	A134758	House	c1870s	Considerable	
Brunswick Rd	96	Albany	A135057	House	c1890	Considerable	Yes
Brunswick Rd	118	Albany	A159522	<i>Dunmoylen</i>	1889	Some/Moderate	Yes
Brunswick Rd	120	Albany	A135859	<i>Lawley House</i>	1903	Considerable	
Brunswick Rd	133	Albany	A74368	Lawley Park and Lawley Park Tennis Courts and Spencer Memorial	1901	Considerable	
Brunswick Rd	135-137	Albany	A162624	Douglas's House	c1881	Considerable	
Brunswick Rd	136	Albany	A136324	<i>Parkville</i>	c1850	Considerable	
Brunswick Rd	138	Albany	A136374	<i>Ivanhoe</i>	c1898	Considerable	
Brunswick Rd	Lot 1575	Port Albany	A220565	Mass Rocks	1838	Considerable	
Burgoyne Rd	46-92	Albany	A139730	Balston Gardens	1946	Some/Moderate	
Burgoyne Rd	57-59	Port Albany	A139023	Lookout Rocks	1860s	Considerable	
Burgoyne Rd	120-122	Albany	A140216	<i>Whispering Pines</i>	c1898	Some/Moderate	
Burgoyne Rd	140	Albany	A140464	<i>Como</i>	c1890	Considerable	
Burt St	55-59	Mt Clarence	A126232	<i>The Priory</i> (Refer Old Surrey)	c1891	Exceptional	

Street Name	Street No/Loc	Locality	Assess No.	Name of Place	Date of Construction	Level of Significance	New Entry
Campbell Rd	1	Mt Clarence	A234768	Albany Senior High School	1925	Exceptional	
Chester Pass Rd	779	Willyung	A171944	Dymesbury Park - Stables	c1890s	Some/Moderate	
Chester Pass Rd	2151	Napier	A64898	Napier Hall	1954	Some/Moderate	
Cheyne Rd	Lot 7705	Cheyne's Waychinnicup Inlet	A239029	Sealers' Oven	1800	Exceptional-Registered	
Cliff St	8	Albany	A106080	House	c1840-c1890	Some/Moderate	
Cliff St	28-30	Albany	A105858	House	c1890-c1915	Some/Moderate	
Cliff St	36	Albany	A105745	<i>Luxmoore</i>	1898	Some/Moderate	Yes
Cliff St	38	Albany	A105745	House	1898	Some/Moderate	Yes
Cliff St	40-42	Albany	A105696	House	c1890-c1915	Some/Moderate	
Cliff Way	6	Albany	A105286	Hillside	1886	Exceptional-Registered	
Collie St	1	Albany	A97142	Lockup & Keeper's Quarters (Refer Old Courthouse)	1908	Exceptional-Registered	
Collie St	37-39	Albany	A107082	<i>Kia Ora</i>	c1870s	Considerable	
Collie St	41-47	Albany	A231712	House	c1870s	Considerable	
Collie St	49-51	Albany	A106981	<i>Gilbert's Cottage</i>	c1870s	Considerable	
Collie St	71-77	Albany	A176011 A176007	Albany Fire Station and Officer's House	1938	Exceptional-Registered	Yes
Collie St	120	Albany		Headmaster's Quarters (Refer Albany State School Group)	c1880	Exceptional-Registered	
Crossman St	37	Mt Melville	A89644	House	c1880s	Considerable	
Cunningham St	16	Emu Point	A154356	House	c1915-c1940	Considerable	Yes
Cuthbert St		Albany		Cuthbert Street Precinct	c1880-c1930	Considerable	Yes
Cuthbert St	5	Albany	A107375	House	c1890	Considerable	
Cuthbert St	7 to 9	Albany	A107393	Semi-detached Houses	c1890	Considerable	
Cuthbert St	13-17	Albany	A107339	House	c1895	Considerable	Yes
Cuthbert St	21	Albany	A107325	House	c1895	Considerable	
Cuthbert St	23	Albany	A107280	House	c1880s	Considerable	
Cuthbert St	26	Albany	A107163	House	c1915	Considerable	
Cuthbert St	27	Albany	A107262	House	c1888	Considerable	
Cuthbert St	28-32	Albany	A107195	House	c1915	Considerable	
Davies Rd	61	Kalgan	A67222	<i>Gomm Cottage</i>	c1904-1910	Considerable	

Street Name	Street No/Loc	Locality	Assess No.	Name of Place	Date of Construction	Level of Significance	New Entry
Drew St	24-32	Albany	A	Oak Trees	c1880s	Considerable	Yes
Duke St	1	Albany	A186676	Sergeant's Quarters (Refer Old Courthouse)	1909	Exceptional-Registered	
Duke St	10	Albany	A107096	<i>Sherratt House</i>	c1880s	Considerable	
Duke St	12 to 40	Albany	A100010	Wesley Church Group	1891/1903	Exceptional-Registered	
Duke St	33-37	Albany	A97093	Patrick Taylor Cottage	1832	Exceptional-Registered	
Duke St	49-53	Albany	A99885	<i>Bay View House</i>	c1900	Considerable	
Duke St	54-60	Albany	A99948	Wollaston House	c1840/1850	Exceptional-Registered	
Duke St	61-63	Albany	A99754	<i>Conelma</i>	c1895	Considerable	Yes
Earl St	35	Albany	A140937	Seventh Day Adventist Church	1924	Considerable	
Earl St	50-60	Albany	A142751	Earl of Spencer Inn	c1850s	Exceptional	
Eastbank Rd	42	Kalgan	A2874	<i>Windy Hill</i>	c1890s	Considerable	
Eastbank Rd	56	Kalgan	A233883	<i>Stranmore</i>	c1914	Considerable	
Elleker-Grasmere Rd	217	Elleker	A9440	House	c1900	Considerable	
Elleker-Grasmere Rd	546	Elleker	A52932	<i>Burleigh</i>	1924	Considerable	
Festing St	10	Albany	A140022	<i>Lavender Cottage</i>	c1883	Considerable	
Festing St	14	Albany	A99461	House	c1889	Considerable	
Festing St	27	Albany	A97584	House	c1890-c1915	Some/Moderate	
Festing St	84-98	Mt Melville	A81585	Albany Fish Ponds	1870-1907	Exceptional-Registered	
Finlay St	6	Albany	A156657	House	c1890-c1895	Considerable	Yes
Finlay St	10	Albany	A207042	<i>Dunrossness Cottage</i>	c1885	Considerable	Yes
Finlay St	14	Albany	A172009	House	c1890-c1915	Some/Moderate	Yes
Finlay St	16	Albany	A156819	House	c1890-c1915	Some/Moderate	
Finlay St	18	Albany	A154158	House	c1890-c1915	Considerable	
Flinders Pde	2 & 10	Middleton Beach	A223660 A232746	Ellen Cove Jetty and Norfolk Island Pine Trees	c1899	Considerable	
Flinders Pde	37	Middleton Beach	A90382	CWA Seaside Flats	1938	Considerable	
Forts Rd	106	Mt Clarence	A	The Albany Forts	1891-1893	Exceptional-Registered	
Frederick St	27	Albany	A136635	<i>Mongup</i>	c1900	Some/Moderate	
Frederick St	30	Albany	A200642	House	1898	Some/Moderate	
Frederick St	32	Albany	A200638	House	1898	Some/Moderate	

Street Name	Street No/Loc	Locality	Assess No.	Name of Place	Date of Construction	Level of Significance	New Entry
Frederick St	34	Albany	A137542	<i>Dalacelil</i>	1870	Some/Moderate	
Frederick St	36	Albany	A143636	National Australia Bank	c1870s	Considerable	
Frederick St	44	Albany	A137623	Albany Co-operative Society Building	1870	Exceptional-Registered	
Frederick St	52	Albany	A137704	House	c1883	Considerable	
Frederick St	58-62	Albany	A137740	House	c1880	Considerable	
Frederick St	61	Albany	A158728	Moir Wharehouse	c1888	Considerable	
Golflinks Rd	18B	Middleton Beach	A161933	House		Little	
Golflinks Rd	Res 27629	Albany	A145757	Albany Golf Course	1898	Exceptional-Registered	Yes
Green Island	Res A24808	Oyster Harbour	A237336	Green Island		Considerable	
Grey St East	12	Albany	A145022	House	c1840-c1890	Some/Moderate	
Grey St	60	Albany	A145707	House	c1865	Considerable	
Grey St	66	Albany	A136572	Salvation Army Hall	1911	Considerable	
Grey St	122	Albany	A104446	Peruvian Pepper tree	1886	Considerable	
Grey St	148	Albany	A104347	House	c1880s	Considerable	
Grey St	153	Albany	A102145	House	c1890	Some/Moderate	
Grey St	160	Albany	A104234	House	c1900	Some/Moderate	
Grey St	170	Albany	A104086	House	c1880s	Exceptional	
Grey St	172	Albany	A104036	House	c1880s	Considerable	
Grey St	176	Albany	A103999	House	c1926	Considerable	
Grey St	178	Albany	A103953	House	c1900	Considerable	
Grey St	183	Albany	A102474	House	c1880s	Considerable	
Grey St	184	Albany	A103917	The Rocks	1882	Exceptional-Registered	
Grey St	194	Albany	A103822	House	1921	Considerable	
Grey St	198	Albany	A103787	<i>McKenzie House</i>	c1880s	Exceptional	
Grey St	206	Albany	A103737	House	1914	Exceptional-Registered	
Grey St	208	Albany	A206400	House	1886	Considerable	
Hanrahan Rd	76 & 877	Mt Melville	A226729	World WarII U.S. Navy Fuel Tanks	1942	Considerable	Yes
Hare St	162	Albany	A85781	Albany Snake Run Skateboard Park	1976	Exceptional-Registered	Yes
Homestead Rd	681	Manypeaks	A4175	<i>The Homestead</i>	1929	Considerable	
Hotchin Ave	5 to 9	Albany	A110071	Melville House	c1873	Exceptional-Registered	
Hotchin Ave	11	Albany	A104252	House	c1890s	Some/Moderate	

Street Name	Street No/Loc	Locality	Assess No.	Name of Place	Date of Construction	Level of Significance	New Entry
Hunton Rd	669	Kalgan	A3664	<i>Sunnyside Homestead</i>		Some/Moderate	
Hunwick Sth Rd	Lot 244	Torbay	A66446	Torbay Hall	1912	Considerable	
John St	29	Mt Clarence	A96415	House	c1900s	Some/Moderate	
Lake Seppings Dve	Res 22058, 1299, 29187, 23775	Seppings		Lake Seppings		Exceptional	Yes
Lower Denmark Rd	891	Cuthbert	A7072	Cuthbert Post Office and Telephone Exchange	c1925	Some/Moderate	
Lower Denmark Rd	1240	Elleker	A8187	Station Master's House	c1890-c1915	Some/Moderate	
Lower Denmark Rd	2749	Bornholm	A65214	Bornholm-Kronkup District Hall	1923	Considerable	
Lower King Rd	241 (Loc 5659)	Walmsley	A14807	Eyre and Wylie Memorial - Allambie Park Cemetery	1965	Considerable	
Lower Stirling Tce	176	Albany	A97368	Taxi Rank and Women's Rest Rooms	1909/1926	Exceptional-Registered (Considerable)	
Lower Stirling Tce	255-267	Albany	A96893	Old Albany Gaol	1852/1873	Exceptional-Registered	
Melville St	34	Albany	A179968	House	c1900s	Some/Moderate	
Melville St	41	Albany	A109630	House	c1890s	Considerable	
Mermaid Ave	20	Emu Point	A153746	House	c1921	Considerable	Yes
Middleton Rd	89	Middleton Beach	A132835	House	c1890-c1915	Some/Moderate	
Middleton Rd	165 (13)	Mt Clarence	A142616	<i>The Gums</i>	c1890	Considerable	
Middleton Rd	168-170	Mira Mar	A136784 A136829 A136851 A50821	Strawberry Hill Farm (Barmup)	1836/1890	Exceptional-Registered	
Middleton Rd	176	Mira Mar	A136900	Tree	c1830s	Considerable	
Middleton Rd	195	Mt Clarence	A130764	House	c1920	Some/Moderate	
Middleton Rd	215	Mt Clarence	A97502	House	c1885	Considerable	
Middleton Rd	216	Mira Mar	A137443	<i>Oakview Cottage</i>	c1890-c1915	Some/Moderate	
Middleton Rd	218	Albany	A126985	House	c1890-c1915	Some/Moderate	Yes
Middleton Rd	226	Mira Mar	A137641	House	c1890-c1915	Some/Moderate	
Middleton Rd	250	Mira Mar	A97958	Matthew Cull's House	1872	Exceptional-Registered	
Middleton Rd	263-275	Mt Clarence	A158449	Memorial Park Cemetery	1840-1959	Exceptional-Registered	
Middleton Rd	277-291	Mt Clarence	A158403	Bob Thomson Gardens	c1960s	Considerable	

Street Name	Street No/Loc	Locality	Assess No.	Name of Place	Date of Construction	Level of Significance	New Entry
Middleton Rd	298	Centennial Park	A98621	Dog Rock (<i>Yakka</i>)	-	Exceptional	
Mill St	5	Albany	A215225	House (<i>Refer Worsted and Woollen Mills</i>)	c1920s	Considerable	
Mill St	9	Albany	A215225	House (<i>Refer Worsted and Woollen Mills</i>)	c1920s	Considerable	
Mill St	11 to 13	Albany	A215225	Worsted and Woollen Mills	1924	Considerable	
Millbrook Rd	1454	King River	A50942	<i>Greendale</i>	1912/13	Considerable	
Millbrook Rd	1520	King River	A6037	King River Hall	1900	Exceptional-Registered	
Millbrook Rd	1596	King River	A5604	<i>Happy Days</i>	1896	Exceptional	
Mokare Rd	Res 28725	Spencer Park	A	Spencer Park Wildflower Reserve	c1960	Little	
Mount St	4 to 6	Port Albany	A157451	House	c1860s	Considerable	
Myola Dve	39	Kalgan	A235693	<i>Douglas House</i>	1898	Considerable	Yes
Nambucca Rise	Lot 8054	Lower Kalgan	A163004	Scarred Tree	-	Exceptional	
Nanarup Rd	19	Lower King	A1750578	<i>Prideaux Cottage</i>	c1894	Considerable	
Nanarup Rd	334	Kalgan	A63012	<i>Rainscourt</i>	1907	Considerable	
Nanarup Rd	516	Kalgan	A69406	Lower Kalgan Hall	1954	Little	
Nanarup Rd	1207	Nanarup	A232061	<i>Springmount</i>	c1894	Exceptional	
Nanarup Rd		Kalgan		Lower Kalgan River Bridge/Jetty Group	1904/1958	Exceptional-Registered	
North Rd	107	Elleker	A11572	House	c1900	Considerable	
Norwood Rd	312	King River	A4800	<i>Balgownie</i>	c1891	Considerable	
Parade St	1	Albany	A108688	Mouchemore's Cottage and Net Shed	c1890s	Exceptional-Registered	
Parade St	2 to 4	Albany		Residency Group	1826/1854/ 1873	Exceptional-Registered	
Parade St	9	Albany	A108606	<i>Roseneath</i>	c1890s	Considerable	
Parade St	11	Albany	A108561	House	1891	Considerable	
Parade St	14	Albany	A107474	House	c1897	Considerable	
Parade St	15	Albany	A108507	House	c1880s	Some/Moderate	
Parade St	23-35	Albany	A161523	Foundation Park	1827	Exceptional	Yes
Parade St	28	Albany	A107569	House	c1888	Considerable	
Parade St	adj no. 11	Albany		Central Datum Point and Military Station Flagstaff	1827	Exceptional	Yes
Parker St	1 to 15	Lockyer	A124337	Apex Park - Lake Weerlara	1953	Exceptional	

Street Name	Street No/Loc	Locality	Assess No.	Name of Place	Date of Construction	Level of Significance	New Entry
Peels Pl	2 to 14	Albany	A136441 A136504	Moirs Buildings	c1895	Considerable	
Peels Pl	55-57	Albany	A99691	<i>Lavender Cottage</i>	c1910	Some/Moderate	
Peels Pl	Lot 830	Albany	A234457	Nesbitt Gardens and Palm tree	1951	Little	
Peels Pl	Lot 831	Albany	A234461	Fallen Soldiers' Memorial	1921	Considerable	Yes
Point King	Lot 1005	Mt Clarence	A136928	Point King Lighthouse	1858	Exceptional-Registered	
Pony Club Rd	50	Willyung	A176192	Ballymena	c1910	Exceptional-Registered	
Princess Royal Dve	Lot 1576	Port Albany	A175154	Albany Pilot Station	1884-1902	Exceptional-Registered	
Princess Royal Dve	Lot 514	Albany	A239574	Millars' Sawdust Kiln	c1888	Some/Moderate	
Princess Royal Dve	Lot 1584	Albany	A233932	Albany Town Jetty (incl. Deepwater Jetty)	1862-1900	Exceptional-Registered	
Proudlove Pde	22-32	Albany	A157447	Dalgety's Wool Warehouse	1918	Considerable	
Proudlove Pde	45-77	Albany	A140428	Railway Station and Bond Store	1888	Exceptional-Registered	
Proudlove Pde		Albany	A157609	Queen's Jubilee Park and Rotunda	1897/1898	Exceptional-Registered (Considerable)	
Proudlove Pde	Lot 511	Albany	A239669	RSL Memorial Gardens	1935-37	Exceptional	
Quaranup Rd	743	Vancouver Peninsula	A65309	Quaranup Complex	1874-1903	Exceptional-Registered	
Quaranup Rd	Lot 8168	Frenchman Bay	A237980	Whaling Cove ruins	c1835/1849	Exceptional-Registered	
Rowley St	2	Albany	A153124	House	1890/1892	Considerable	
Rowley St	4	Albany	A153174	House	1890/1892	Considerable	
Rowley St	10	Albany	A153417	House	c1890-c1915	Considerable	Yes
Rowley St	12	Albany	A153485	House	c1890-c1915	Considerable	
Rowley St	14	Albany	A153534	House	c1890-c1915	Considerable	Yes
Rowley St	25	Albany	A152695	House	c1891	Exceptional-Registered	
Rowley St	27	Albany	A152631	House	1891	Considerable	
Rowley St	33	Albany	A152528	House	1881	Considerable	
Rowley St	37	Albany	A152398	House	c1890-c1915	Some/Moderate	Yes
Rowley St	39	Albany	A152348	House	c1890s	Some/Moderate	
Rowley St	41	Albany	A153534	<i>Merri Fields</i>	1897	Some/Moderate	
Rowley St	46	Albany	A154158	House	c1890-c1915	Some/Moderate	

Street Name	Street No/Loc	Locality	Assess No.	Name of Place	Date of Construction	Level of Significance	New Entry
Serpentine Rd East	24-28	Albany	A157726	Waggon Rock	-	Some/Moderate	Yes
Serpentine Rd	34	Albany	A157811	House	1900	Some/Moderate	
Serpentine Rd	106-116	Albany	A81981	Pymont	c1870s	Exceptional-Registered	
Serpentine Rd	117-121	Albany	A106599	Albany State School Group	1880-1897	Exceptional-Registered	
Serpentine Rd	142	Albany	A160107	<i>Merfield House</i>	1912	Considerable	
Serpentine Rd	148-150	Albany	A82294	<i>Somerville</i>	c1920	Considerable	
Serpentine Rd	152-154	Mt Melville	A82410	House	c1880-1890	Considerable	
Serpentine Rd	172	Mt Melville	A82618	Camfield House	1858/1910	Exceptional-Registered	
Serpentine Rd	176	Mt Melville	A89351	House	c1880s	Some/Moderate	
Serpentine Rd	197	Mt Melville	A113059	House	c1920s	Considerable	
Serpentine and Hanrahan Rd		Mt Melville		Mt Melville (incl. Mokare Park and Lion St Reserve)	-	Exceptional	Yes
Seymour St	24-26	Mira Mar	A231532	Hawthorndene	1892	Exceptional-Registered	
Seymour St	39	Mira Mar	A143983	Sir Richard and Lady Spencer's Grave	1839/41/55	Exceptional-Registered	
Spencer St	32-34	Albany	A150718	House (incl. Stirling Tce Precinct)	c1890	Exceptional-Registered	
Spencer St	36-40	Albany	A239899 A239902 A239885	Reeves Timber Yard and Hardware	c1948	Considerable	Yes
Spencer St	60	Albany	A151134	Albany Masonic Hall	1903	Exceptional-Registered	Yes
Spencer St	61	Albany	A	House	c1890	Some/Moderate	Yes
Spencer St	62	Albany	A151198	House	1897	Considerable	
Spencer St	64	Albany	A151265	House	c1890s	Exceptional	Yes
Spencer St	63-73	Albany	A150411	Houses	1880s (1887)	Exceptional	
Spencer St	66	Albany	A	House	c1890	Some/Moderate	
Spencer St	84	Albany	A	House	c1900	Little	
Spencer St	86	Albany	A	House	c1900	Some/Moderate	Yes
Spencer St	87	Albany	A150362	<i>Cossie's Cottage</i>	c1880	Considerable	Yes
Spencer St	88	Albany	A151986	House	c1870s	Considerable	Yes
Spencer St	93	Albany	A150308	House	c1880s	Considerable	
Spencer St	96-106	Albany	A152154	Army Drill Hall	1893/1920s	Considerable	

Street Name	Street No/Loc	Locality	Assess No.	Name of Place	Date of Construction	Level of Significance	New Entry
Spencer St	97	Albany	A150178	<i>Pickwick House</i>	c1890	Some/Moderate	
Station St	29	Young's Siding	A	Young's Siding Hall	1923	Considerable	
Stead Rd	34-36	Centennial Park	A88804	<i>Smith's Cottage</i>	c1890	Considerable	
Stead Rd	86	Centennial Park	A89315	House	c1880s	Some/Moderate	Yes
Stirling Tce	22	Albany	A158368 A158336	House	c1900	Considerable	
Stirling Tce	24	Albany	A158417	<i>Kent House</i>	c1885	Considerable	
Stirling Tce	26	Albany	A158453	<i>Belburne</i>	c1890	Considerable	
Stirling Tce	28-30	Albany	A158499	Norman House and Magnolia Tree	c1858	Considerable	
Stirling Tce (rear)	28-30	Albany	A158499	Cheyne's Stable, Outbuilding & Oak Tree	c1840	Exceptional	
Stirling Tce (portion Spencer St)	32-190 (28-32)	Albany		Stirling Terrace Precinct	c1867-c1915	Exceptional-Registered	
Stirling Tce	32	Albany	A158566	House (incl. Stirling Tce Precinct)	c1915-c1940	Exceptional-Registered (Little)	
Stirling Tce	33-39	Albany	A157659 A157695 A157730 A157762 A157807 A157843	Old Albany Post Office	1868/1896	Exceptional-Registered	Yes
Stirling Tce	34-50	Albany	A158601	Everett's Corner	1908/1912	Exceptional-Registered (Some/Moderate)	
Stirling Tce	34-50, 42, 46 and 48	Albany	A158601	Argyle House	1880s	Exceptional-Registered (Some/Moderate)	
Stirling Tce	52-58	Albany	A200070	Edinburgh House	1882	Exceptional-Registered (Considerable)	
Stirling Tce	52-58	Albany	A200070	Glasgow House	1882/1911	Exceptional-Registered (Considerable)	
Stirling Tce	60-70	Albany	A200070	Royal George Hotel	c1880s/1910	Exceptional-Registered (Considerable)	
Stirling Tce	72-80	Albany	A152564	White Star Hotel	1910	Exceptional-Registered (Some/Moderate)	

Street Name	Street No/Loc	Locality	Assess No.	Name of Place	Date of Construction	Level of Significance	New Entry
Stirling Tce	82-84	Albany	A158912	J McKail & Co.	1880	Exceptional-Registered (Considerable)	
Stirling Tce	86-94	Albany	A158976	National Bank	1881	Exceptional-Registered (Considerable)	
Stirling Tce	96-102	Albany	A159027	Edward Barnett & Co. Building	1906/1911	Exceptional-Registered (Some/Moderate)	
Stirling Tce	104-106	Albany	A159077	Norman Brothers	c1910	Exceptional-Registered (Considerable)	
Stirling Tce	108-110	Albany	A159144	Sandover & Co.	c1891	Exceptional-Registered (Considerable)	
Stirling Tce	112-140	Albany	A74057	Drew Robinson & Co.	1891	Exceptional-Registered (Considerable)	
Stirling Tce	144	Albany	A74138	The West Australian Bank	1891	Exceptional-Registered (Considerable)	
Stirling Tce	146-152	Albany	A74192	Empire Building	1912	Exceptional-Registered (Considerable)	
Stirling Tce	160-162	Albany	A97287	London Hotel	1909	Exceptional-Registered (Considerable)	
Stirling Tce	164-166	Albany	A163824	Commercial Building	c1910	Exceptional-Registered (Some/Moderate)	
Stirling Tce	168-180	Albany	A163838	R. Bell and Co	1887/1903	Exceptional-Registered (Considerable)	
Stirling Tce	184-190	Albany	A97142 A186676	Albany Court House Complex	1897/1908-09	Exceptional-Registered (Considerable)	
Stirling Tce	204-208	Albany	A97142	Kookas	1845	Exceptional-Registered	
Stirling Tce	244	Albany	A96974	Albany Road Board Building	1926	Some/Moderate	
Symers St	4	Mira Mar	A95661	House	c1880	Considerable	
Tassell St	Res 24409	Mira Mar	A	Bluff Rock	-	Considerable	
Thomas St	5 to 11	Mt Clarence	A153881	Old Surrey House and The Priory Group	c1841	Exceptional	

Street Name	Street No/Loc	Locality	Assess No.	Name of Place	Date of Construction	Level of Significance	New Entry
Two Peoples Bay Rd	Lot 5368	Nanarup	A235003	Fisherman's Shack	c1950	Some/Moderate	Yes
Vancouver Rd	Lot 300 & 301	Frenchman Bay	A234493 A238473	Frenchman Bay Whaling Station ruin	1914	Exceptional-Registered	
Vancouver Rd	Res 21337	Frenchman Bay	A234493	Vancouver Spring and Dam (Refer Frenchman Bay Whaling Station ruin)	1791/1851/ 1902	Exceptional-Registered	
Vancouver St	4	Albany	A176007	Fire Officer's House (Refer Albany Fire Station and Fire Officer's House)	1938	Exceptional-Registered	Yes
Vancouver St	6	Albany	A101981	House	c1880s	Considerable	
Vancouver St	8	Albany	A	House	c1880s	Considerable	
Vancouver St	10	Albany	A101927	House	c1880s	Considerable	
Vancouver St	12	Albany	A101882	House	c1880s	Considerable	Yes
Vancouver St	24-26	Albany	A101864	<i>Dalkeith</i>	1880-1885	Considerable	
Vancouver St	27-29	Albany	A100092	House	c1919	Considerable	
Vancouver St	28	Albany	A101814	<i>Aldersyde</i>	c1880s	Considerable	
Vancouver St	36	Albany	A101729	<i>Bangor House</i>	1881	Exceptional	
Vancouver St	42	Albany	A101701	Garryowen	1908	Exceptional-Registered	
Vancouver St	54	Albany	A100939	House	c1890-1900	Some/Moderate	
Vancouver St	58	Albany	A100876	House	c1890-c1915	Some/Moderate	
Vancouver St	62	Albany	A100826	House	c1900s	Some/Moderate	
Vancouver St	65	Albany	A100268	Berryman's Store	1934	Considerable	
Vancouver St	68	Albany	A100795	House	c1861	Considerable	
Vancouver St	72	Albany	A100777	House	1880s	Some/Moderate	Yes
Vancouver St	74	Albany	A100745	House	1890	Some/Moderate	
Vancouver St	76	Albany	A100709	<i>Celurca</i>	1910	Considerable	Yes
Vancouver St	77-87	Albany	A100402	Albany Cottage Hospital	1887-1896	Exceptional-Registered	
Vancouver St	80	Albany	A100664	House	1870s-1880s	Considerable	Yes
Vancouver St	82	Albany	A177491	<i>Stratford Villa</i>	c1860s	Considerable	
Whaling Station Rd	Loc 7620	Frenchman Bay	A162430	Cheynes Beach Whaling Station	1952	Exceptional-Registered	

Street Name	Street No/Loc	Locality	Assess No.	Name of Place	Date of Construction	Level of Significance	New Entry
Wheeldon Rd		Kalgan	S00400	Kaglan River Fishtraps	-	Exceptional	
Wheeldon Rd	6	Upper Kalgan	A3858	<i>Maitland</i>	1915/1916	Considerable	
Wheeldon Rd	29	Kalgan	A65836	Kalgan Hall (Upper)	1912	Some/Moderate	
Willyung Rd	102	Willyung	A6561	<i>Sherwood</i>	1957	Some/Moderate	
Willyung Rd	183	Willyung	A5456	Willyung Cottage and stables	1893	Exceptional	
Willyung Rd	203	King River	A179152	<i>Pendeen Homestead</i>	1898/1899	Considerable	
Wylie Cres	1	Middleton Beach	A89252	<i>The White House</i>	c1836	Exceptional	
York St		Albany	A	Hordern Monument	1890	Considerable	
York St	119-125	Albany	A106111	Albany House	1884	Exceptional-Registered	
York St	130-132	Albany	A148442 A148492	St Albans Buildings	1909	Considerable	
York St	135	Albany	A164010	Law Offices	1894	Exceptional-Registered	
York St	137-139	Albany	A106161	<i>Treasure's Building</i>	1882	Considerable	Yes
York St	146	Albany	A148145	The Spot Cash Draper	1909	Considerable	
York St (Rear)	148-154	Albany	A148082	<i>Baesjou Cottage</i>	c1860	Considerable	
York St	149-163	Albany	A106238	St John's Church Group	1841-1875	Exceptional-Registered	
York St	165	Albany	A106323	Albany Advertiser and Printing Works	c1894	Considerable	
York St	168-174	Albany	A147846	Scots Church	1892	Exceptional-Registered	
York St	194-208	Albany	A143898	Premier Hotel	1891/1913	Considerable	Yes
York St	217	Albany	A106490	Albany Town Hall	1888	Exceptional-Registered	
York St	239-259	Albany	A106616	Alison Hartman Gardens/Significant Trees <i>(Refer Albany State School)</i>	1902/1979	Exceptional-Registered	
York St	244-248	Albany	A146763	Albany Hotel	1852/1908	Considerable	



REVIEW OF THE CITY'S HERITAGE SURVEY AND HERITAGE LIST

The Heritage Survey and Heritage List are important tools to honour Albany's heritage and protect places of heritage value for future generations to enjoy.



COMMUNITY UPDATE

APRIL 2020

WHAT IS A HERITAGE SURVEY AND A HERITAGE LIST?

Heritage surveys are compiled to "tell the stories" of their districts – it provides an understanding of the history and development of the local government area, identify the key themes and storylines that have shaped it and the places that reflect or encapsulate this. It is in essence a stock-take of a community's heritage places.

Being included on a Heritage Survey is an acknowledgement of a place's heritage value and there are no additional statutory implications imposed. Owners are free to develop their properties in accordance with the normal planning requirement which apply to all properties in the City. Inclusion in the Heritage Survey does not mean that your property is 'heritage listed'.

The Heritage List is different. This list is part of the City's Local Planning Scheme and it comprises the best of places in the Heritage Survey. Properties on the Heritage List have significant heritage value and are protected under the Local Planning Scheme. A wide range of development options remains possible under the Heritage List such as additions, alterations and improvements.

The City is the custodian of many heritage buildings and places on the Heritage Survey and/or the Heritage List and has an annual budget dedicated to the maintenance and upkeep of these places. The City is proud of its commitment to preserving Albany's heritage.

BACKGROUND TO THE HERITAGE SURVEY

The City recently completed a comprehensive review of its MHI 2000 and updated it into what is now referred to as the City of Albany Heritage Survey.

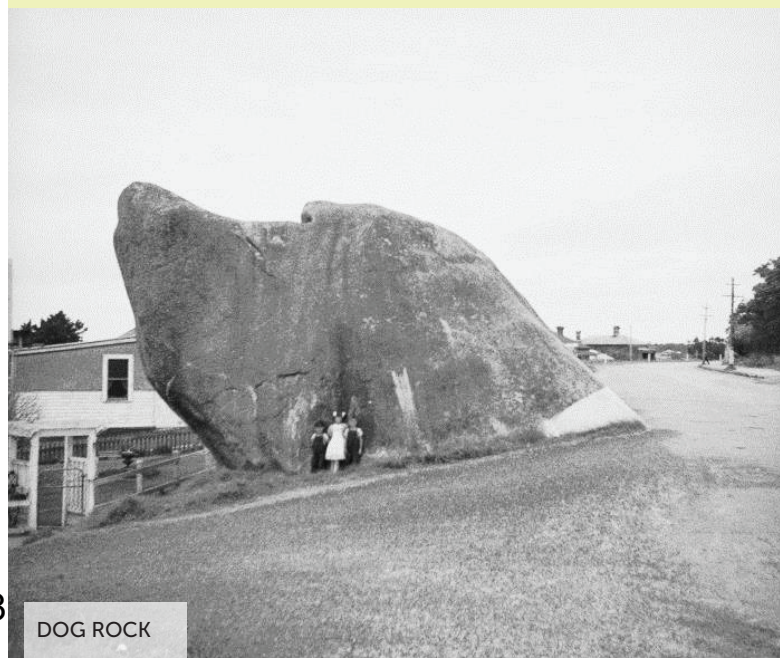
Those places that were included in the original MHI were all automatically transferred across into the new Heritage Survey. The review process has been an opportunity to update the information on all places in the original MHI; to reconsider the significance of places in light of further analysis and information forthcoming, and to also consider additional

What is meant by a heritage place?

Heritage places are those places from the past which we want to pass on to future generations because they are reminders of, and contribute to, the story of the history and development of a community and its people.

Heritage places does not just refer to "built heritage" but other kinds of sites and elements – such as trees and gardens, jetties and bridges, mine sites, wells and dams, as well as places of importance to Aboriginal people including those that pre-date British settlement (such as fishtraps and scar trees). In some instances, even a place that no longer has any tangible evidence remaining is still important to record and recognise for its contribution to the story.

Some heritage places can at first glance seem humble and understated but by understanding its history, can be pivotal to the way a community has evolved and developed and represent spiritual or social connections.



DOG ROCK

places of heritage value that may have been previously omitted and since been identified and nominated. The draft Heritage Survey now contains over 330 places; being a mix of individual places as well as groups of related heritage places and heritage precincts.

HOW DOES A PLACE GET ADDED TO THE HERITAGE SURVEY?

Once all the research and evidence has been gathered for a place, an assessment of heritage value is made and if a place has been identified as having one or more heritage values then it will be recommended to be included, endorsed by Council and owners advised of this recommendation.

The decision-making around including a place in a Heritage Survey hinges on the historical and physical evidence of the place.

In addition to this, a place may be included because of a strong connection to or relationship with other places included in the Heritage Survey. This relationship or connection can be physical (e.g. in the same street) or because they are one of a group of places that are linked thematically (e.g. the local agricultural halls along the Albany-Denmark railway line).

The history of each place is carefully researched. You may find out some interesting things about your property!

Once a place has been identified and assessed as having heritage significance, and therefore worthy of inclusion in the Heritage Survey, it is then allocated a Level of Significance. These levels are based on the standard criteria endorsed by the Heritage Council of WA.

The Levels of Significance used in the Heritage Survey are explained below:

Level of Significance	Description
Exceptional significance	Essential to the heritage of the locality. Rare or outstanding example. Exceptional – Registered identifies those places that have been entered on the State Register of Heritage Places.
Considerable significance	Very important to the heritage of the locality. High degree of integrity/ authenticity.
Some/Moderate significance	Contributes to the heritage of the locality. Has some altered or modified elements, not necessarily detracting from the overall significance of the place.
Little significance	Has elements or values worth noting for community interest but otherwise makes little contribution.

WHAT PLACES ARE INCLUDED IN A HERITAGE LIST?

A Heritage List is about identifying and capturing the most significant heritage places in a local government area for which it is important to apply sound and responsible planning for their future conservation and protection.

Heritage Surveys provide the foundation information for identifying those places that may be recommended for inclusion in the City's Heritage List. Only places in the Heritage Survey can be included in the Heritage List.

What is heritage value? REPORT ITEM DS219 REFERS

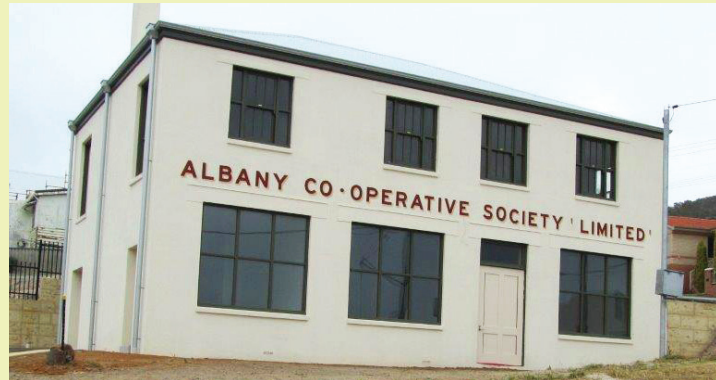
The heritage value of a place is not determined by age – by how old it is - but relates to how and why it is important and to who. Identifying the heritage values of a place is not determined by or to be confused with development potential or economic factors.

Heritage value is defined by the notions of aesthetic, historic, research, social and spiritual values. A place may represent one or all of these heritage values, and even one value would be sufficient for it to be regarded as a “heritage place”. In some situations, a place may be of value not at an individual level but because of its contribution and/or relationship to other places or because it is within a precinct.

A heritage assessment for a place also looks at the rarity of a place and what distinctive qualities and characteristics it may represent, as well as issues such as integrity (e.g. still used for the purpose it was built), authenticity (e.g. how much original fabric and detailing still exists) and condition. The “condition” of a place however is not a primary determining factor, in that some places even in very poor condition can have heritage value, including ruins and places that are no more than an archaeological site. That is where a place may have “research” value.

In the case of buildings, heritage value is not necessarily just applied to the exterior or even just the façade, but in some cases also to interiors as well as other aspects such as its setting (e.g. landscaped grounds, gardens, trees) and to ancillary structures (e.g. outside laundries, garages, wells).

A place may have significance to the broader community or have more specific significance to groups within that community – such as religious groups, social groups, migrants or people associated with particularly industries and trades.



Generally, places that will be considered for the Heritage List will be those of Exceptional and Considerable Significance in the Heritage Survey. However, in some cases places of Some/Moderate Significance may be included depending on case by case basis and its inherent heritage values and relationship to other heritage places (i.e. if a place is within a heritage precinct or area).

It is also important to consider that these places are not only important to the City of Albany but also to Western Australia's historic heritage and the broader community more generally.



CAN I OBJECT TO MY PLACE BEING INCLUDED IN THE HERITAGE SURVEY AND/OR HERITAGE LIST?

Owners can object to the inclusion of their place if they believe that the information on the Place Record Form is incorrect or has been misinterpreted. However, as there are no statutory implications associated with being included in Heritage Survey, owners should have no cause for concern for their place being included.

Being included on a Heritage List is about whether a place has heritage significance. Given that there is sound evidence that heritage listing has no negative impact on property values and that appropriate, sympathetic and well-thought out changes and additions can be carried out, owners should have no cause for concern for their place being added on the Heritage List.

Many places are subject to change in ownership, inclusion on the Heritage Survey and/or the Heritage List should not be determined by ownership.

CAN I STILL MAKE CHANGES AND IMPROVEMENTS TO MY PROPERTY IF IT IS IN THE HERITAGE SURVEY?

Being included in the Heritage Survey does not impose any additional building or planning approval requirements beyond what is normally required for any property owner.

Significant works or changes such as additions, modifications or subdivision can be made to places included in the Heritage Survey however, they are still subject to the same planning approval requirements under the City's Local Planning Scheme.

Although there are no additional statutory requirements over and above that which is normally required for any property, the City encourages owners of places in the Heritage Survey to discuss their plans for major changes as part of the normal process of seeking building and/or planning approval. Sensitive development and new compatible uses of heritage places are the best way of ensuring the elements that are significant are retained and its heritage values are preserved and even enhanced through development.

This can include changing the external colour scheme of your house or even wanting to paint or render original

face-brick or stone as the colour scheme. Building fabric and general aesthetics of your house can be an important element of its heritage significance as well as important to its future conservation. In addition, the City can provide advice on appropriate products to be used on heritage fabric.

General maintenance and minor remedial works can be carried out without any need for approval.

CAN I STILL MAKE CHANGES AND IMPROVEMENTS TO MY PROPERTY IF IT IS IN THE HERITAGE LIST?

Inclusion on the Heritage List will result in certain additional protection and planning controls being applied as outlined in the Albany Local Planning Scheme but that does not imply that appropriate and well-designed changes and additions will not be considered nor able to be carried out.

Sensitive development and new compatible uses of heritage places are the best way of ensuring the elements that are significant are retained and its heritage values are preserved and even enhanced through development.

The City encourages owners of places on the Heritage List to discuss their plans for major changes and additions prior to seeking planning approval or lodging an application. This can curtail any potential issues before an owner expends time and money on fully developing proposals and designs.

In most situations, a Heritage Impact Statement will be required as part of an application for planning approval. However, this requirement depends on the nature and extent of the works.

General maintenance and minor remedial works can be carried out without any need for approval.

	Heritage Survey	Heritage List
Need for formal development application	Not beyond normal requirements	Yes for some works
Funding/subsidies	No	Cost of development application will be waived by Council. This does not apply to a Building Licence.
Free development advice from heritage specialist	Yes	Yes

DOES INCLUSION IN THE HERITAGE SURVEY AND/OR HERITAGE LIST AFFECT THE VALUE OF MY PROPERTY?

Places included in the Heritage Survey still remain the property of the owner and, like with any property, maintaining your property to a good standard will ensure it maintains its value.

There is no reason if your place is included in the Heritage Survey that it will negatively affect property value because there are no statutory implications from being included. In some cases, the fact that a place has been identified as having "heritage value" can even be highlighted as a key feature or used as a key selling point.

If your property is on the Heritage List, it is subject to additional planning requirements. Even for those places entered on the State

Heritage Register and protected under the Heritage of Western Australia Act 2018, studies around Australia and overseas have found that generally heritage listing has no negative impact on property values and some studies have found that heritage listing can improve a property's value, particularly in areas that have a high concentration of heritage places because of the special and unique ambiance and character the individual places contribute as a whole and the security in development that listing provides when there is a group of heritage places together.

HOW DO I GET TO KNOW MORE ABOUT THE HERITAGE SURVEY AND HERITAGE LIST

The consultation period commences on Monday 9th of March and concludes on Friday 3 April 2020.

Should you wish to meet with the City's Heritage Advisor, appointments are available on Tuesday 10 March during business hours and after hours and on Wednesday 11 March during business hours. Appointments are also available on Mondays, Tuesdays and Wednesdays with the City's Heritage Officer during the consultation period.

Contact the City on 6820 3040 should you wish to make an appointment.

You can check to see if your property is on the Heritage Survey and/or Heritage List by visiting the City website at www.albany.wa.gov.au/consultations

HOW DO I MAKE A SUBMISSION

If you would like to make a submission or submit additional or revised information on your place please email the City at planning@albany.wa.gov.au or send it to the City of Albany, PO Box 484, Albany WA 6330 before 3 April 2020.

WHAT'S NEXT?

Following conclusion of the advertising period, Council will consider any submission received on the Heritage Survey and/or Heritage List and recommendations made by staff to adopt the Heritage Survey and Heritage List with or without changes.

If you have made a submission you will be notified of the Council meeting.

