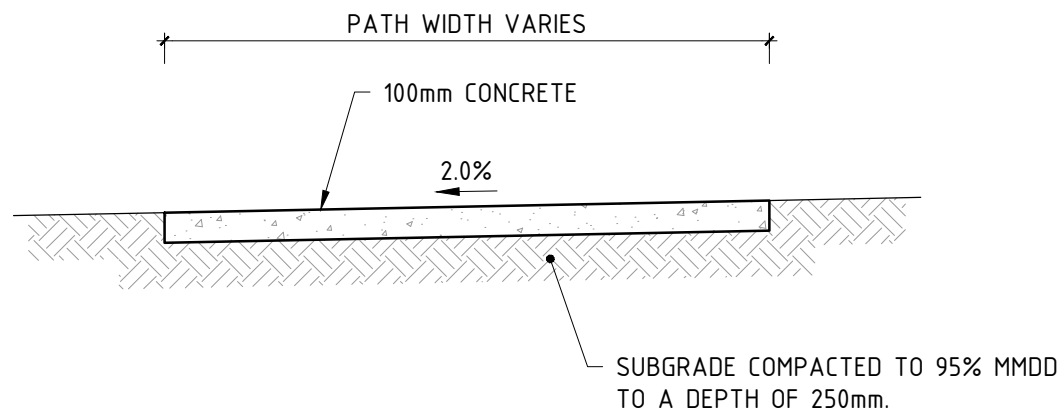


# CITY OF ALBANY ENGINEERING SERVICES

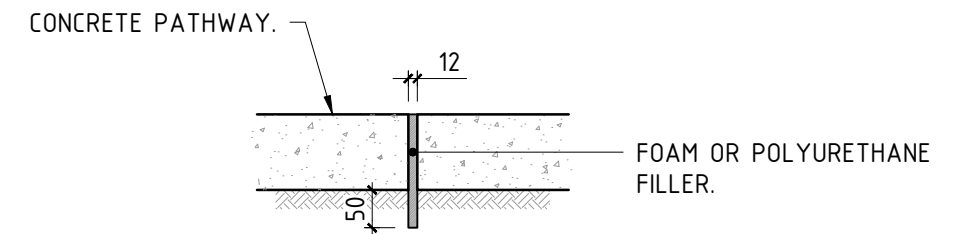
## STANDARD CONSTRUCTION DRAWINGS

| <u>CATEGORY</u> | <u>DRAWING No.</u> | <u>DRAWING TITLE</u>          | <u>REVISION</u> |
|-----------------|--------------------|-------------------------------|-----------------|
| DRAINAGE        | STD-01-01          | TYPICAL MANHOLE               | REV 0           |
|                 | STD-01-02          | UNIVERSAL SIDE ENTRY PIT      | REV 0           |
|                 | STD-01-03          | COMBINATION SIDE ENTRY PIT    | REV 0           |
|                 | STD-01-04          | GRATED GULLY PIT              | REV 0           |
|                 | STD-01-05          | HOUSE CONNECTION PIT          | REV 0           |
|                 | STD-01-06          | UNDERGROUND STORAGE PIT       | REV 0           |
|                 | STD-01-07          | KERB OUTLET                   | REV 0           |
| KERBING         | STD-02-01          | TYPE 1 KERB PROFILES          | REV 0           |
|                 | STD-02-02          | TYPE 2 KERB PROFILES          | REV 0           |
|                 | STD-02-03          | TYPE 3 KERB PROFILES          | REV 0           |
|                 | STD-02-04          | CONCRETE APRON                | REV 0           |
| PATHWAYS        | STD-03-01          | CONCRETE PATHWAY DETAILS      | REV 0           |
|                 | STD-03-02          | ASPHALT PATHWAY DETAILS       | REV 0           |
|                 | STD-03-03          | PEDESTRIAN RAMP - TYPE 1      | REV 0           |
|                 | STD-03-04          | PEDESTRIAN RAMP - TYPE 2      | REV 0           |
| SIGNS           | STD-04-01          | STREET NAME SIGNS             | REV 0           |
| CROSSOVERS      | STD-05-01          | STANDARD CROSSOVER - CONCRETE | REV 0           |
|                 | STD-05-02          | STANDARD CROSSOVER - ASPHALT  | REV 0           |
|                 | STD-05-03          | STANDARD CROSSOVER - PAVED    | REV 0           |



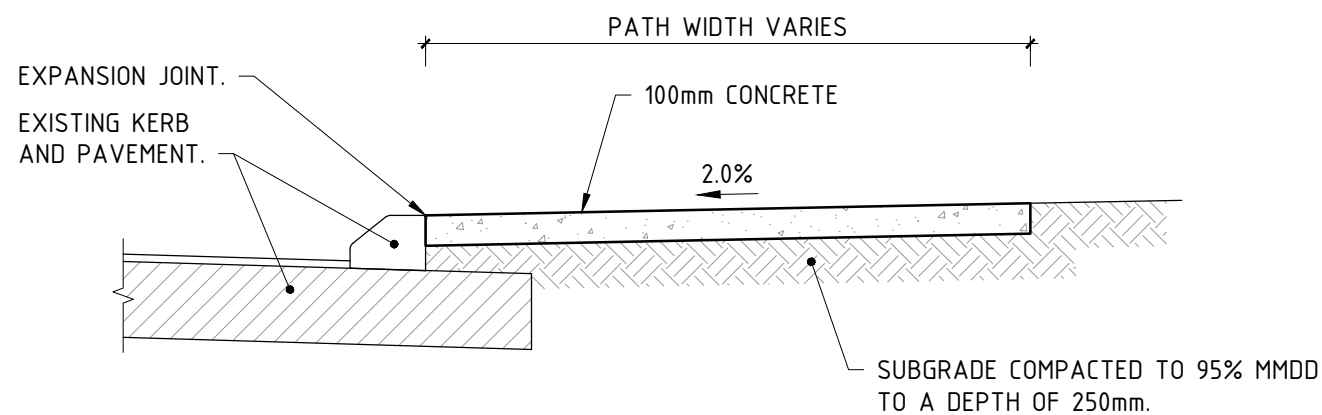
### TYPICAL CONCRETE PATHWAY

SCALE: 1:25



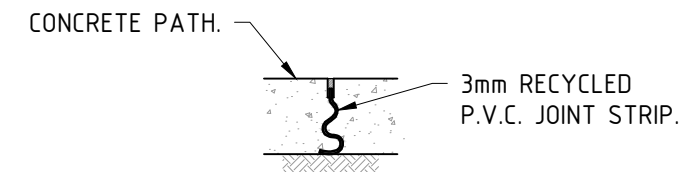
### PATHWAY EXPANSION JOINT DETAIL

SCALE: 1:10



### TYPICAL CONCRETE PATHWAY TO BACK OF KERB

SCALE: 1:25



### LOCK JOINT DETAIL

SCALE: 1:10

#### NOTES:

1. CONCRETE STRENGTH TO 25Mpa COMPRESSIVE STRENGTH AT 28 DAYS. MAXIMUM AGGREGATE SIZE 14mm AND MAX SLUMP OF 75mm.
2. PATHWAY TO HAVE A DEEP BROOM FINISH (2mm) WITH A SMOOTH EDGE APPROX 75mm WIDE AT EDGES AND EXPANSION JOINTS. THERE IS TO BE NO SMOOTH EDGE AT LOCK JOINTS.
3. LOCK JOINT SPACING NOT TO EXCEED 1.5 x PATHWAY WIDTH.
4. EXPANSION JOINTS TO BE INSTALLED AT 50m SPACING ON STRAIGHTS, AT THE START AND END OF CURVES, WHERE PATH CONNECTS ANOTHER PATH OR KERB, BETWEEN BACK OF KERB AND EDGE OF PATH, AND WHERE PATH ABUTS A BUILDING OR IN-GROUND INFRASTRUCTURE.
5. PATHWAY EXPANSION JOINTS TO ALIGN WITH KERB EXPANSION JOINTS.
6. EXPANSION JOINT PACKING MATERIAL TO EXTEND 50mm BELOW BASE OF PATH AND 10mm OUT OF SIDES TO ENSURE COMPLETE SEPARATION OF PANELS.

| REV | DESCRIPTION | APPROVED | DATE     |
|-----|-------------|----------|----------|
| 0   | APPROVED    | DK       | 26/06/18 |

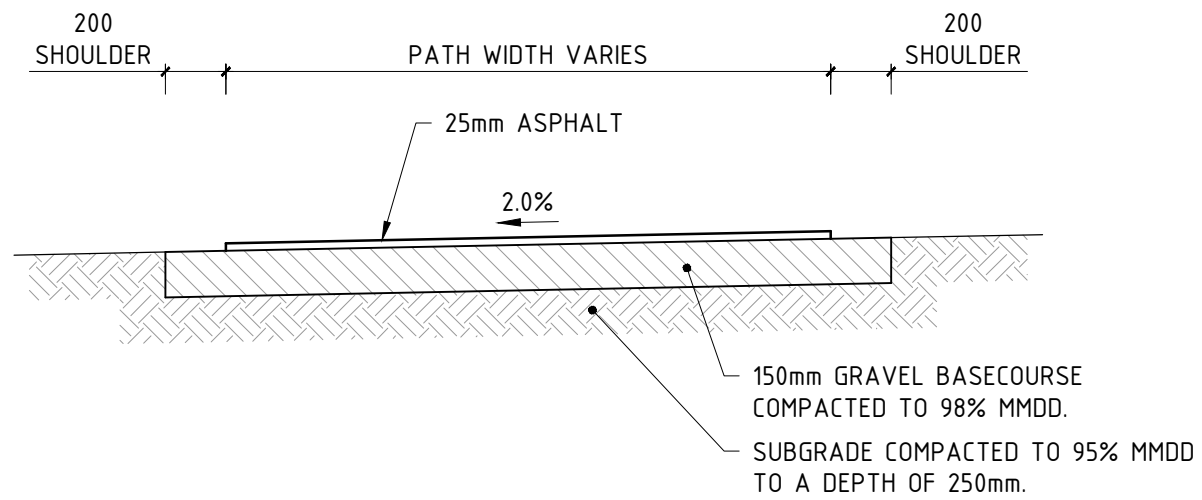


102 NORTH ROAD, YAKAMIA WA 6330  
 PO BOX 484 ALBANY WA 6331  
 Tel: (08) 9841 9333  
 Fax: (08) 9841 4099  
 Email: cityassets@albany.wa.gov.au  
 Website: www.albany.wa.gov.au

# APPROVED

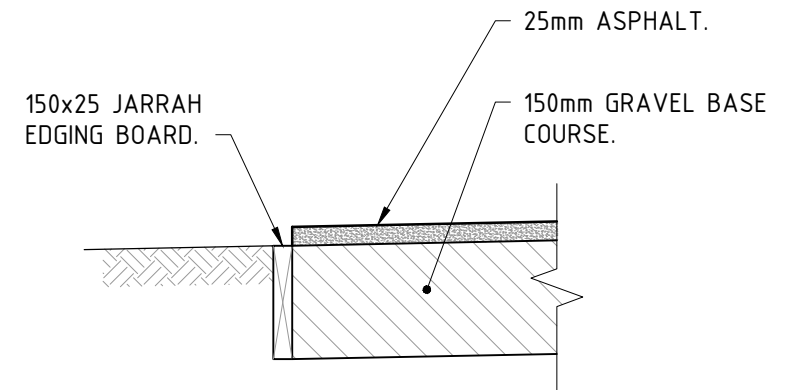
THIS DRAWING IS NOT TO BE USED FOR CONSTRUCTION UNLESS SIGNED AS APPROVED

| PROJECT  |          |        |           |           |     |
|--|----------|--------|-----------|-----------|-----|
| CITY OF ALBANY ENGINEERING SERVICES STANDARD CONSTRUCTION DRAWINGS |          |        |           |           |     |
| DRAWING NAME   |          |        |           |           |     |
| CONCRETE PATHWAY DETAILS   |          |        |           |           |     |
| DRAWING No   | FILE REF | JOB No | SCALE     | SHEET No  | REV |
| -  | -        | -      | 1:25 @ A3 | STD-03-01 | 0   |



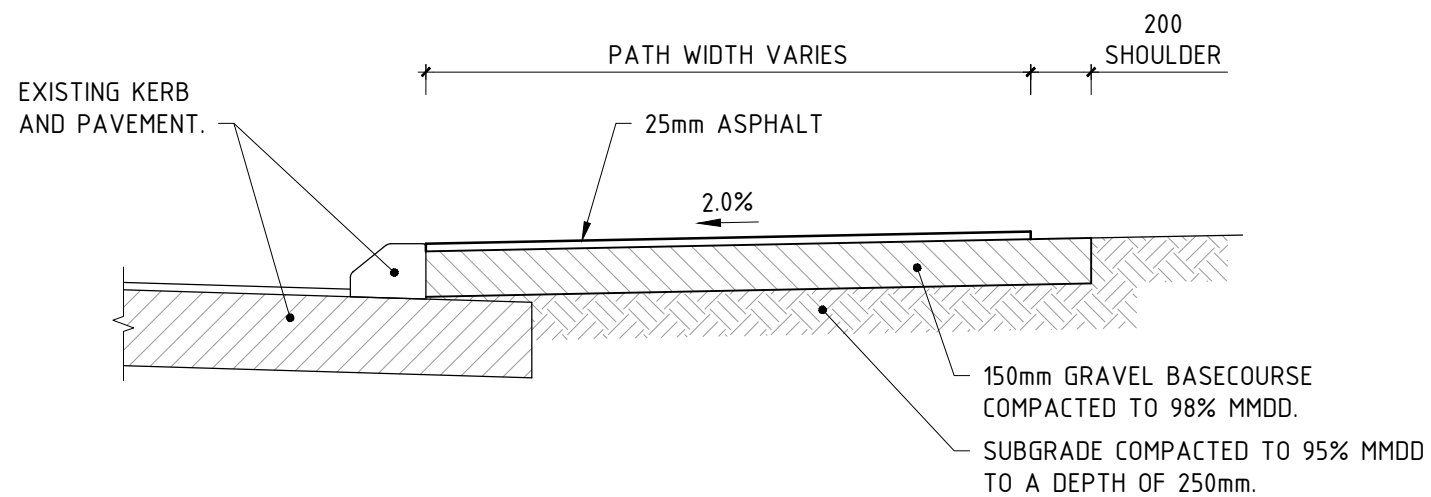
**TYPICAL ASPHALT PATHWAY**

SCALE: 1:25



**TIMBER EDGING DETAIL**

SCALE: 1:10



**TYPICAL ASPHALT PATHWAY  
TO BACK OF KERB**

SCALE: 1:25

**NOTES:**

- ALL BITUMEN PRODUCTS SHALL COMPLY WITH THE FOLLOWING RELEVANT STANDARDS
  - AS2008-1997 RESIDUAL BITUMEN FOR PAVEMENTS.
  - AS2150-2005 HOT MIX ASPHALT - A GUIDE TO GOOD PRACTICE.
  - AS1160-1996 BITUMEN EMULSIONS FOR THE CONSTRUCTION AND MAINTENANCE OF PAVEMENTS.

| REV | DESCRIPTION | APPROVED | DATE     |
|-----|-------------|----------|----------|
| 0   | APPROVED    | DK       | 26/06/18 |



102 NORTH ROAD, YAKAMIA WA 6330  
 PO BOX 484 ALBANY WA 6331  
 Tel: (08) 9841 9333  
 Fax: (08) 9841 4099  
 Email: cityassets@albany.wa.gov.au  
 Website: www.albany.wa.gov.au

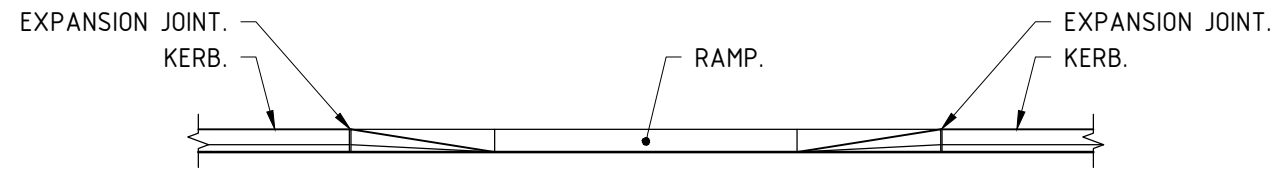
**APPROVED**

AUTHORISED DESIGNED DRAWN

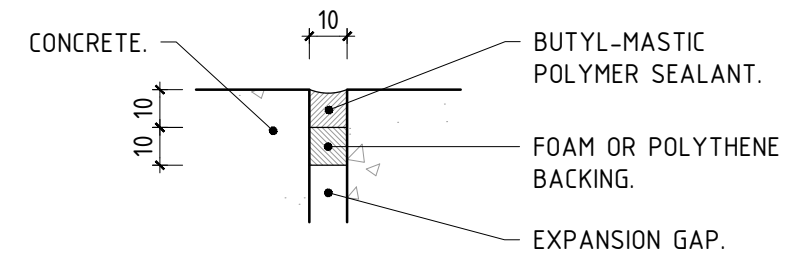
JLP

THIS DRAWING IS NOT TO BE  
 USED FOR CONSTRUCTION  
 UNLESS SIGNED AS APPROVED

| PROJECT   |          |        |           |           |     |
|---|----------|--------|-----------|-----------|-----|
| CITY OF ALBANY ENGINEERING SERVICES<br>STANDARD CONSTRUCTION DRAWINGS |          |        |           |           |     |
| DRAWING NAME  |          |        |           |           |     |
| CONCRETE PATHWAY DETAILS  |          |        |           |           |     |
| DRAWING No  | FILE REF | JOB No | SCALE     | SHEET No  | REV |
| -   | -        | -      | 1:25 @ A3 | STD-03-01 | 0   |



**ELEVATION**

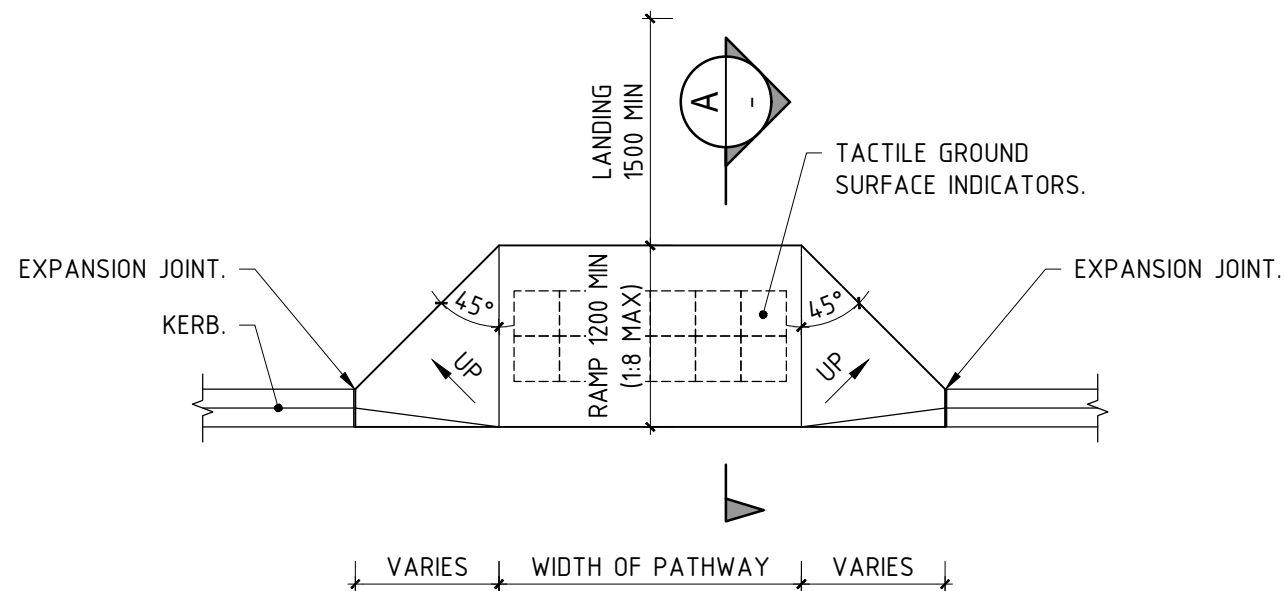


**EXPANSION JOINT DETAIL**

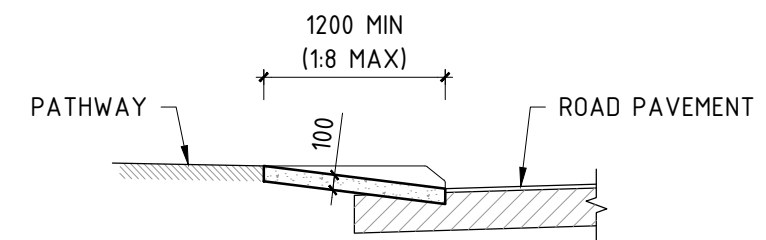
SCALE: 1:2

**NOTES:**

1. THE KERB RAMP SHOULD BE ALIGNED IN THE DIRECTION OF TRAVEL.
2. EDGE OF RAMP SHALL BE FLUSH WITH ROAD PAVEMENT (ASPHALT OR SEAL).
3. CONCRETE STRENGTH TO BE 25MPa COMPRESSIVE STRENGTH AT 28 DAYS. MAXIMUM AGGREGATE SIZE 14mm AND SLUMP OF 75mm.
4. ALL CONCRETE SHALL BE BROOM FINISHED ACROSS THE DIRECTION OF PEDESTRIAN TRAFFIC TO PROVIDE A NON-SLIP FINISH.
5. TACTILE GROUND SURFACE INDICATORS SHOULD BE PROVIDED AND INSTALLED AS PER AS 1428.4.



**PLAN**



**SECTION A**

**PEDESTRIAN RAMP - TYPE 1**

SCALE: 1:50

| REV | DESCRIPTION | APPROVED | DATE     |
|-----|-------------|----------|----------|
| 0   | APPROVED    | DK       | 26/06/18 |

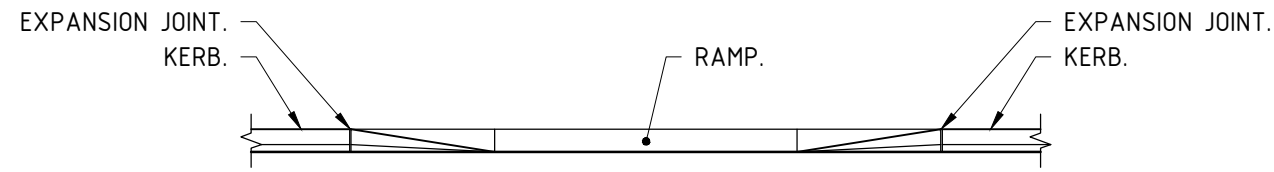


102 NORTH ROAD, YAKAMIA WA 6330  
 PO BOX 484 ALBANY WA 6331  
 Tel: (08) 9841 9333  
 Fax: (08) 9841 4099  
 Email: cityassets@albany.wa.gov.au  
 Website: www.albany.wa.gov.au

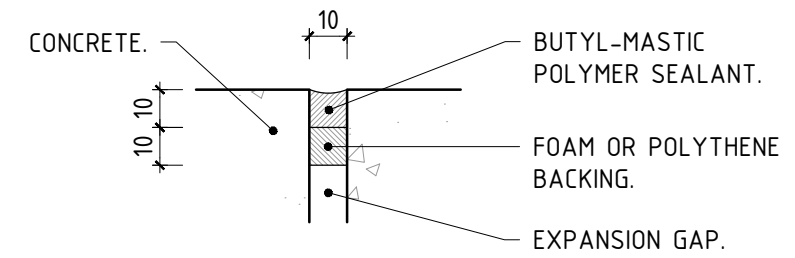
**APPROVED**

AUTHORISED DESIGNED DRAWN  
 JLP  
 THIS DRAWING IS NOT TO BE USED FOR CONSTRUCTION UNLESS SIGNED AS APPROVED

| PROJECT  |          |        |           |           |     |
|--|----------|--------|-----------|-----------|-----|
| CITY OF ALBANY ENGINEERING SERVICES STANDARD CONSTRUCTION DRAWINGS |          |        |           |           |     |
| DRAWING NAME   |          |        |           |           |     |
| PEDESTRIAN RAMP - TYPE 1   |          |        |           |           |     |
| DRAWING No   | FILE REF | JOB No | SCALE     | SHEET No  | REV |
| -  | -        | -      | 1:50 @ A3 | STD-03-03 | 0   |



**ELEVATION**

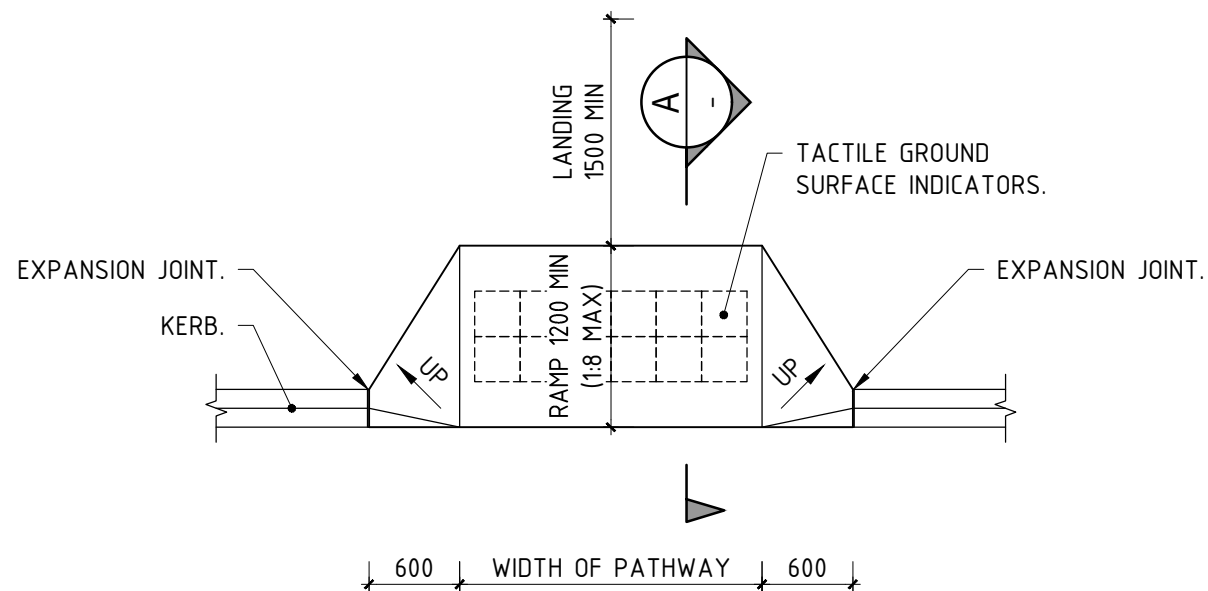


**EXPANSION JOINT DETAIL**

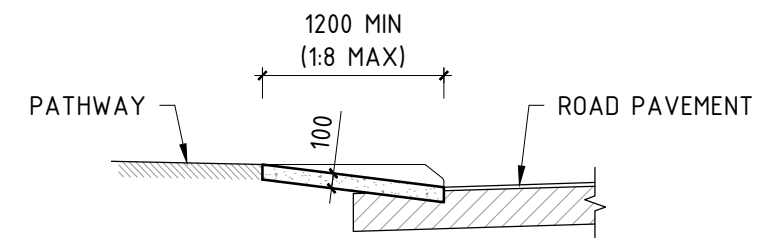
SCALE: 1:2

NOTES:

1. THE KERB RAMP SHOULD BE ALIGNED IN THE DIRECTION OF TRAVEL.
2. EDGE OF RAMP SHALL BE FLUSH WITH ROAD PAVEMENT (ASPHALT OR SEAL).
3. CONCRETE STRENGTH TO BE 25MPa COMPRESSIVE STRENGTH AT 28 DAYS. MAXIMUM AGGREGATE SIZE 14mm AND SLUMP OF 75mm.
4. ALL CONCRETE SHALL BE BROOM FINISHED ACROSS THE DIRECTION OF PEDESTRIAN TRAFFIC TO PROVIDE A NON-SLIP FINISH.
5. TACTILE GROUND SURFACE INDICATORS SHOULD BE PROVIDED AND INSTALLED AS PER AS 1428.4.



**PLAN**



**SECTION A**

**PEDESTRIAN RAMP - TYPE 2**

SCALE: 1:50

| REV | DESCRIPTION | APPROVED | DATE     |
|-----|-------------|----------|----------|
| 0   | APPROVED    | DK       | 26/06/18 |



102 NORTH ROAD, YAKAMIA WA 6330  
 PO BOX 484 ALBANY WA 6331  
 Tel: (08) 9841 9333  
 Fax: (08) 9841 4099  
 Email: cityassets@albany.wa.gov.au  
 Website: www.albany.wa.gov.au

**APPROVED**

AUTHORISED

DESIGNED

DRAWN  
JLP

THIS DRAWING IS NOT TO BE  
 USED FOR CONSTRUCTION  
 UNLESS SIGNED AS APPROVED

| PROJECT   |          |        |           |           |     |
|---|----------|--------|-----------|-----------|-----|
| CITY OF ALBANY ENGINEERING SERVICES<br>STANDARD CONSTRUCTION DRAWINGS |          |        |           |           |     |
| DRAWING NAME  |          |        |           |           |     |
| PEDESTRIAN RAMP - TYPE 2  |          |        |           |           |     |
| DRAWING No  | FILE REF | JOB No | SCALE     | SHEET No  | REV |
| -   | -        | -      | 1:50 @ A3 | STD-03-04 | 0   |