

# City of Albany Rural Waste Services Guide



Let's work  
together to divert  
60% of our waste  
from landfill by  
2030

[www.albany.wa.gov.au/waste](http://www.albany.wa.gov.au/waste)

# Let's sort what goes where

This is your guide to the City of Albany's waste services for rural households.

You'll find information here on how to sort your waste, how to use Rural Transfer Stations, and what you can drop off at Fossicker's Tip Shop.

We can all help look after our beautiful Albany community by reducing the waste we generate and sorting our waste correctly.

Together, we can achieve our goal of diverting 60% of our waste from landfill by 2030.



## Rural Resident Waste Passes

The City of Albany provides complimentary waste passes to households outside of the kerbside bin collection area.

Residents in these areas can use these passes to dispose of their household waste at the City's Rural Waste Transfer Stations or Waste Facilities.

Rural transfer stations provide a domestic waste service for rural ratepayers within the City of Albany.

Each financial year, rural ratepayers receive:

- 40 tokens - for disposal of a 140L bin (or equivalent) of general waste per token; and
- 1 ute/trailer pass - for disposal of larger items, up to 300kg.

Additional passes can be purchased from the City of Albany Administration Office on North Road. Information on fees for additional passes is available on the City of Albany website.

### Please note:

It is a condition of using your Rural Residents Waste Pass that waste is separated correctly, including removing recyclables and hazardous waste items from general waste.

# Rural Transfer Stations

## Using Transfer Stations

- Please arrive at least 15 minutes prior to closing to allow time for unloading.
- Present pass to Transfer Station attendant on arrival who will record your address and vehicle registration. One token will be redeemed for the equivalent of a 140L bin of general waste. Larger loads will require more than one token.
- Deposit your household recycling in the recycling bins provided.
- Move your vehicle to the General Waste unloading ramp to deposit your waste into the large skip bin.
- Some items cannot be accepted at transfer stations. This includes hazardous waste and items that have a fee attached at waste facilities, such as mattresses, asbestos and tyres.

## Safety notes

- Vehicle ignition must be switched off while unloading waste.
- Please ensure you are able to safely unload your own waste and bring someone to assist if needed. The facilities are not designed for tipping wheelie bins into the skip bins. It may be easier to have your general waste contained in bags.
- Children and pets should remain in vehicles at all times.
- Be aware of other vehicles moving around the site.
- Wear enclosed footwear.



### Kronkup

2392 Lower Denmark Road (1.5 km past Cosy Corner Rd).

Opening times:

Tuesday 8.30am - 12.30pm

Wednesday 8.30am - 12.30pm

Thursday 12.30pm - 4.30pm

Saturday 8.30am - 4.30pm (closed 12.30pm-1pm)

Sunday 12.30pm - 4.30pm

### Manypeaks

Lot 51 South Coast Highway (opposite Howie Rd).

Opening times:

Tuesday 8.30am - 11.30am

Thursday 8.30am - 12.00pm

Sunday 8.30am - 11.30am

### Bakers Junction\*

1206 Chester Pass Road.

Opening times:

Tuesday 8.30am - 12.30pm

Saturday 8.30am - 4.15pm (closed 12.30pm-1pm)

### Redmond

Lot 50 Redmond Hay River Road (just before Redmond townsite).

Opening times:

Monday 12.30pm - 4.30pm

Wednesday 8.30am - 11.30am

Saturday 1.30pm - 4.30pm

### South Stirling

Lot 324 South Stirling Road (opposite Pfeiffer Rd).

Opening times:

Thursday 1.00pm - 4.00pm

Saturday 9.00am - 11.30am

### Wellstead

Bover Street (off South Coast Hwy).

Opening times:

Monday 9.15am - 11.45am

Wednesday 1.00pm - 3.45pm

Saturday 1.00pm - 3.45pm

### Hanrahan Road Waste Facility\*

Opening times:

Monday - Sunday 8.30am - 4.15pm

Make sure your load  
is covered and secure  
to prevent littering  
during transport!

Closed Good Friday, Christmas Day and New Years Day. Opening times are subject to change. Please visit [www.albany.wa.gov.au](http://www.albany.wa.gov.au) or phone (08) 6820 3000 to confirm.

\*Facility supports option to pay by card.

# What can go into transfer station recycling bins?

Items dropped off for recycling are sorted, baled and transported to be turned into new products.

## THREE EASY RECYCLING RULES

- Rinsed
- Loose in bin
- Lids off

## IMPORTANT INFORMATION

- No soft plastics
- No batteries or hazardous waste
- No clothing or rope
- No dirty containers

Remember: It is a condition of using your Rural Residents Waste Pass that recycling is separated from general waste.



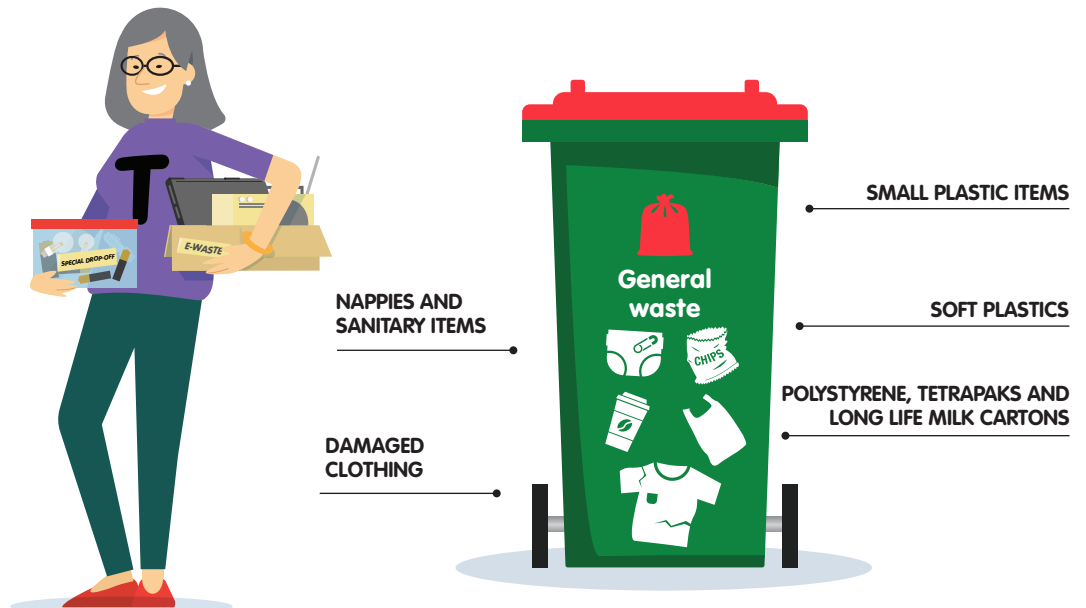
# What can go into transfer stations general waste bins?

General waste items are sent to landfill.

## IMPORTANT INFORMATION

Do not place batteries, electronic waste, lightglobes, chemicals, paint and flammable items in transfer station bins.

These items can be hazardous and should be dropped at Fossicker's Tip Shop instead (household quantities only, maximum 20l/kg).



# Options for home organics recycling

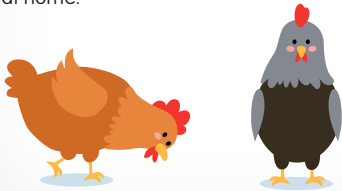
Turn your food scraps and garden waste into compost.

## COMPOST IS NATURE'S WAY OF RECYCLING

Join the backyard revolution of people composting at home to recycle your food and garden waste.

You could use traditional composting, worm farming, bokashi, or you might prefer some chickens!

Visit the Waste Sorted website for a beginners guide to recycling your organics at home.



### GARDEN WASTE

Grass cuttings, leaves and small prunings

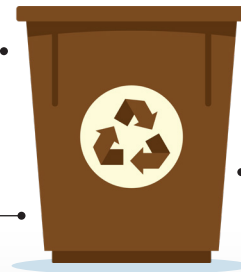
### FOOD WASTE

Check recommendations for your chosen method - you may need to leave some things out



### USED PAPER PRODUCTS

Including paper towel, tissues, shredded paper and cardboard (such as pizza boxes)



## Disposing of bulky items

### Using your ute / trailer pass

Rural residents receive one ute/trailer pass each year, which residents can use to drop off larger items (up to 300kg) at Transfer Stations or waste facilities.

Bulk garden waste can be taken to Soil Solutions on John Street, Milpara for a fee (rural passes not accepted).

### Items accepted at Hanrahan Road

Some larger items are only accepted at the Hanrahan Road Waste Facility for a fee. These include tyres, mattresses, fridges/freezers and asbestos.

Please check the City of Albany website for more information.

### Items in good condition?

Larger items in good condition may be accepted at Fossicker's Tip Shop or local charities, subject to their requirements.

You could also try selling or giving away items on local buy and sell pages or websites.





FOSSICKER'S TIP SHOP:

Sunday, Monday, Wednesday and Friday  
8.30am - 4.15pm

FOSSICKER'S DROP OFF:

Daily from 8.30am - 4.15pm

## HANRAHAN ROAD WASTE FACILITY

CNR HANRAHAN RD & CUMING RD, MT MELVILLE

(08) 6820 3915

### WE ACCEPT & SELL:

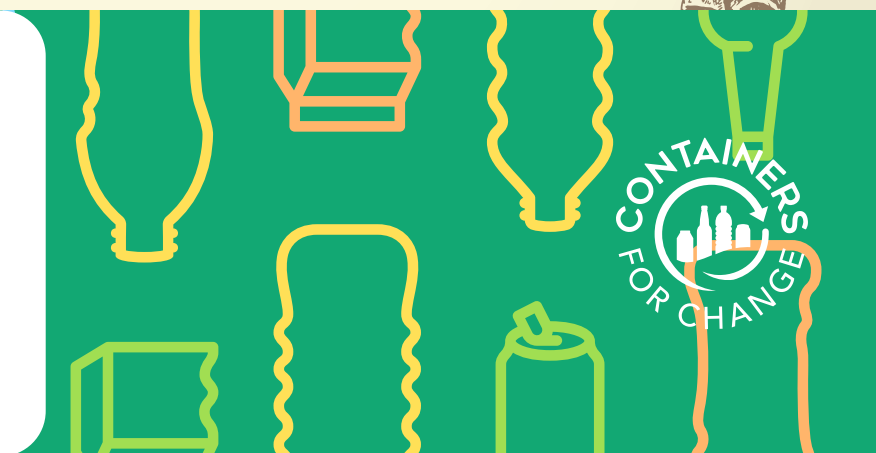
- FURNITURE AND HOUSEHOLD ITEMS
- HOMEWARES, BOOKS, BRIC-A-BRAC
- SOME ELECTRICAL GOODS
- TOYS, OUTDOOR & GARDEN ITEMS
- DIY AND RENOVATION GOODS



# CONTAINERS FOR CHANGE

Containers for Change is WA's state-wide container deposit scheme that lets you cash in eligible containers for 10 cents each. You can also choose to donate your refund to your local sporting club or community group. For more information on eligible containers and local refund points, visit

[www.containersforchange.com.au/wa](http://www.containersforchange.com.au/wa)



## FREE household hazardous waste drop off

Household hazardous waste (HHW) includes any unwanted products that are corrosive, flammable, toxic or reactive. They're often things that are harmful to you, your family, your pets or the environment, and should not go in any transfer station bins.

You can drop off household quantities (up to 20l/kg) of these items at Fossicker's Tip Shop at the Hanrahan Road Waste Facility for no charge. These items will be recycled or safely disposed of.

For a full list of HHW items visit

[www.wastenet.net.au/household-hazardous-waste-program.aspx](http://www.wastenet.net.au/household-hazardous-waste-program.aspx)

In addition to these items, Fossicker's Tip Shop also accepts the following for recycling or safe disposal:

- Mobile phones and accessories
- Electronic waste - computers, monitors, TVs, printers, cables
- Ink cartridges
- Needles & syringes
- Household cooking oil

For more information visit [www.albany.wa.gov.au/waste](http://www.albany.wa.gov.au/waste)

These things **MUST NOT** go in any transfer station bins.



Acids



Aerosol cans



Batteries



Chemicals



Fire extinguishers



Gas bottles



Flammables



Poisons



Smoke alarms



Flares



Light globes



Paint

**Did you know?**  
drumMUSTER is the recycling pathway for empty farming chemical containers. Eligible containers can be dropped off at the Hanrahan Road Waste Facility or Kronkup Transfer Station. Visit [www.drummuster.org.au](http://www.drummuster.org.au) for more information.

### Please note:

Fossicker's Tip Shop **DOES NOT** accept farm chemicals.

Register with ChemClear for safe disposal of these items at [www.chemclear.org.au](http://www.chemclear.org.au)

## Transfer Stations & Drop Off Facilities

This Rural Waste Services Guide was printed on recycled paper.  
It can be recycled after use by removing the magnet.

**Waste enquiries:**

**T: (08) 6820 3000**

**E: [fossickers@albany.wa.gov.au](mailto:fossickers@albany.wa.gov.au)**

Want to know more about waste and recycling?  
Visit our website **[www.albany.wa.gov.au](http://www.albany.wa.gov.au)**

FOLLOW US   [www.albany.wa.gov.au/waste](http://www.albany.wa.gov.au/waste)