

Consolidated Local Law - City of Albany Parking and Parking Facilities Local Law Local Law 2009

Gazettal Date / Details:	Gazette Date: 12/02/2010, No. 22, Special Page Number: 611–26 Amendment: Parking and Parking Facilities Amendment Local Law 2012 Gazette Date: 26/04/2013, Page 1662.
Review Reference:	OCM 25/09/2018 Resolution CCS087
Version:	14/03/2025

Table of Contents

PART 1 – PRELIMINARY	4
1.1 Citation	4
1.2 Repeal	4
1.3 Commencement	4
1.4 Interpretation	4
1.5 Application of Local Law	7
1.6 Vehicle and Driver Classification.....	7
1.7 Application and Interpretation of Signs	7
1.8 Powers of the local government.....	8
PART 2—PARKING STATIONS	8
2.1 Establishment of Parking Stations	8
2.2 Fees for Parking Stations.....	8
2.3 Conditions of Parking in a Parking Station.....	8
2.4 Display of Tickets	9
2.5 Lost Tickets	9
2.6 Removal of Vehicles	9
2.7 Parking Within a Parking Space.....	9
2.8 Prohibitions on Stopping or Parking.....	9
2.9 Behaviour in Parking Stations	10
2.10 Parking Stations May be Locked.....	10
2.11 Selling and Hiring in Parking Stations	10
2.12 Authorised Spaces in Parking Stations	10
2.13 Damage to Parking Stations	10
2.14 Operation of Ticket Issuing Machines	10
2.15 Damage to Ticket Issuing Machines	10
2.16 Defacing a Parking Ticket	10
PART 3—PARKING ON THOROUGHFARES	11
3.1 Stopping or Parking Contrary to Signs.....	11
3.2 Occupied Parking Spaces.....	11
3.3 Median Strips and Traffic Islands.....	11
3.4 Parking vehicle on a carriageway	11
3.5 When parallel and right-angled parking apply	12
3.6 When angle parking applies.....	12
3.7 Parking Near Fire Hydrant or Public Post Box	12
3.8 Traffic Obstructions	12
3.9 Double Parking.....	13

3.10	Verge Parking.....	13
3.11	Bus Stops, Pedestrian, Railway and Children's Crossing	13
3.12	No Parking within One Hour.....	13
3.13	Direction to Move Vehicles.....	13
3.14	Stopping in a Loading Zone	13
3.15	Stopping in a taxi zone.....	13
3.16	No parking of vehicles exposed for sale and in other circumstances	14
PART 4	—STOPPING AND PARKING GENERALLY	14
4.1	Parking and Stopping of Bicycles	14
4.2	Authorised Parking	14
4.3	Private Property.....	14
4.4	Stopping heavy, commercial and other types of vehicles in built up area	14
4.5	Marking of Tyres	14
4.6	Parking on Public Reserves	15
4.7	No Obstruction of Public Places.....	15
4.8	Impounding of Vehicles	15
4.9	Stopping in a parking area for people with disabilities	15
4.10	Restrictions on parking in particular areas.....	15
PART 5	—RESIDENTIAL PARKING PERMITS	16
5.1	Residential Parking Permit.....	16
5.2	Conditions of Exemption for Residential Parking Permits	16
5.3	Removal and cancellation of residential parking permit	16
PART 6	—METERED ZONES.....	16
6.1	Determination of metered zones	16
6.2	Parking fee to be paid	17
6.3	Limitation on parking in metered space	17
6.4	No parking when meter is expired.....	17
6.5	Suspension of requirement to pay fee	17
6.6	Vehicles to be within metered space	17
6.7	Permitted insertions in parking meters.....	17
6.8	Parking ticket to be clearly visible	17
6.9	One vehicle per metered space	17
6.10	No parking when hood on meter	17
PART 7	—MISCELLANEOUS.....	18
7.1	Affixing Signs and Notices	18
7.2	No Contravention of Sign	18
7.3	Removal of Notice from Vehicle.....	18
7.4	Offence.....	18
7.5	Prescribed Offences and Modified Penalties	18
7.6	Forms	18
Schedule 1	19
	DEEMED PARKING STATIONS	19
Schedule 2	21
	PRESCRIBED OFFENCES	21
Schedule 3	23
	NOTICE TO OWNER OF VEHICLE INVOLVED IN OFFENCE	23
Schedule 3	24
	INFRINGEMENT NOTICE	24
Schedule 3	25
	INFRINGEMENT NOTICE	25
Schedule 3	26
	WITHDRAWAL OF INFRINGEMENT NOTICE	26

Attachment 1	28
PARKING AND PARKING FACILITIES AMENDMENT LOCAL LAW 2012.....	28
Attachment 2	29
Determination: Metered Parking Zone – Albany Regional Airport.....	29
Attachment 3	29
Determination: Deemed Parking Stations.....	29
Attachment 4	30
Determination: Deemed Parking Station Maps.....	30

PARKING AND PARKING FACILITIES LOCAL LAW 2009

Under the powers conferred by the Local Government Act 1995 and under all other powers enabling it, the Council of the City of Albany resolved on 18 August 2009 to make the following Local Law.

PART 1 – PRELIMINARY

1.1 Citation

This Local Law shall be cited as the *City of Albany Parking and Parking Facilities Local Law 2009*.

1.2 Repeal

The City of Albany Parking and Parking Facilities Local Law 2001 published in the *Government Gazette* on 17 April 2002 is repealed.

1.3 Commencement

This Local Law comes into operation 14 days after the date of its publication in the *Government Gazette*.

1.4 Interpretation

(1) In this Local Law unless the context requires otherwise—

“**ACROD sticker**” has the meaning given to it by the Code;

“**Act**” means *the Local Government Act 1995*;

“**appropriate fee**” means the fee appropriate to the period for which a vehicle has been parked;

“**authorised person**” means a person authorised by the local government under section 9.10 of the Act to perform any of the functions of an authorised person under this Local Law;

“**authorised vehicle**” means a vehicle authorised by the local government or an authorised person to stand or park in an area which is designated by signs for the parking of authorised vehicles only;

“**bicycle**” has the meaning given to it by the Code;

“**bus**” has the meaning given to it by the Code;

“**caravan**” means a vehicle that is fitted or designed for human habitation and which is drawn by another vehicle, or which is capable of self-propulsion;

“**carriageway**” means a portion of a thoroughfare that is improved, designed or ordinarily used for vehicular traffic, and includes the shoulders, and areas, including embayment’s at the side or centre of the carriageway, used for the stopping or parking of vehicles; and where a thoroughfare has 2 or more of those portions divided by a median strip, the expression means each of those portions, separately;

“**CEO**” means the Chief Executive Officer of the local government;

“**children’s crossing**” has the meaning given to it by the Code;

“**Code**” means the Road Traffic Code 2000;

“**commercial vehicle**” means a motor vehicle constructed for the conveyance of goods or merchandise, or for the conveyance of materials used in any trade, business, industry or work whatsoever, other than a motor vehicle for the conveyance of passengers, and includes any motor vehicle that is designed primarily for the carriage of persons, but which has been fitted or adapted for the conveyance of the goods, merchandise or materials referred to, and is in fact used for that purpose;

“Council” means the Council of the local government;

“district” means the district of the local government;

“driver” means any person driving, or in control of, a vehicle;

“fee” means the prescribed amount of legal tender that the local government may impose and determine from time to time for the stopping or parking of a vehicle under and in accordance with sections 6.16 to 6.19 of the Act;

“footpath” has the meaning given to it by the Code;

“GVM” (which stands for “gross vehicle mass”) has the meaning given to it by the Code;

“Loading Zone” means a parking space which is set aside for use by commercial vehicles if there is a sign referable to that space marked “Loading Zone”;

“local government” means the City of Albany;

“median b” has the meaning given to it by the Code;

“metered space” means a section or part of a metered zone that is adjacent to a parking meter and that is marked or defined by painted lines or by metallic studs or similar devices for the purpose of indicating where a vehicle may be parked on payment of a fee or charge;

“metered zone” means any thoroughfare or reserve or part of any thoroughfare or reserve in which parking meters regulate the parking of vehicles;

“motorcycle” has the meaning given to it by the Code;

“motor vehicle” means a self-propelled vehicle that is not operated on rails; and the expression includes a trailer, semi-trailer or caravan while attached to a motor vehicle, but does not include a power assisted pedal cycle;

“occupier” has the meaning given to it by the Act;

“owner”—

- (a) where used in relation to a vehicle licensed under the Road Traffic Act, means the person in whose name the vehicle has been registered under that Road Traffic Act;
- (b) where used in relation to any other vehicle, means the person who owns, or is entitled to possession of that vehicle; and
- (c) where used in relation to land, has the meaning given to it by the Act;

“park”, in relation to a vehicle, means to permit a vehicle, whether attended or not by any person, to remain stationary except for the purpose of—

- (a) avoiding conflict with other traffic; or
- (b) complying with the provisions of any law; or
- (c) taking up or setting down persons or goods (maximum of 2 minutes);

“parking area” has the meaning given to it by the Code;

“parking facilities” includes land, buildings, shelters, ticket zones, parking spaces, parking stations, metered zones, metered spaces and other facilities open to the public generally for the parking of vehicles with or without charge and signs, notices and facilities used in connection with the parking of vehicles;

“parking region” means the whole of the district with the exception of—

- (a) the approach and departure prohibition areas of all existing and future traffic control signal installations as determined by the Commissioner of Main Roads;
- (b) prohibition areas applicable to all existing and future bridges and subways as determined by the Commissioner of Main Roads; and
- (c) any road or part of a road which comes under the control of the Commissioner of Main Roads unless the control of parking and parking facilities on that road or part of a road has been delegated by the Commissioner of Main Roads to the local government;

“parking space” means a section or part of a thoroughfare, a public reserve or a parking station, which is marked, or defined by painted lines, metallic studs, pavers or by similar devices for the purpose of indicating where a vehicle may stop or be parked;

“parking station” means any land or structure constituted as a parking station under this Local Law;

“pedestrian crossing” has the meaning given to by the Code;

“property line” means the boundary between the land comprising a thoroughfare, and the land that abuts thereon;

“public place” means any place to which the public has access whether or not that place is on private property;

“public reserve” means any land—

- (a) which belongs to the local government;
- (b) of which the local government is the management body under the Land Administration Act 1997; or
- (c) which is an “otherwise unvested facility” within section 3.53 of the Act;

“Road Traffic Act” means the *Road Traffic Act 1974*;

“Schedule” means a Schedule to this Local Law;

“sign” means a traffic sign, mark, structure, inscription, road marking, symbol or device placed, marked or erected on or near a thoroughfare, a parking station, a parking facility or a public reserve for the purpose of prohibiting, regulating, guiding or directing the stopping or parking of vehicles;

“stop” in relation to a vehicle means to stop a vehicle and permit it to remain stationary, except for the purposes of avoiding conflict with other traffic or of complying with the provisions of any law;

“symbol” includes any symbol specified by Australian Standard 1742.1 - 1999 and any symbol specified from time to time by Standards Australia for use in the regulation of parking;

“taxi” has the meaning given to it by the *Taxi Act 1994*;

“taxi zone” has the meaning given to it by the Code;

“thoroughfare” has the meaning given to it by the Act;

“ticket issuing machine” means a machine which—

- (a) is operated by the insertion of money or such other form of payment as may be permitted to be made; and
- (b) issues tickets to indicate the period during which it is lawful to remain parked in a parking space to which the machine is referable;

“traffic island” has the meaning given to it by the Code;

“trailer” means a vehicle without motive power of its own, designed for attachment to a motor vehicle for the purpose of being towed, but does not include a semi-trailer or caravan;

“vehicle” has the meaning given to it by the Code;

“verge” means that portion of a thoroughfare which lies between the boundary of a carriageway and the adjacent property line, but does not include a footpath;

- (2) In this Local Law, unless the context requires otherwise, a reference to a thoroughfare, parking station, parking facility or public reserve includes a reference to, as the case may be, any part of the thoroughfare, parking station, parking facility or public reserve.
- (3) A reference to the wording of any sign in this Local Law shall also be deemed to be a reference to the corresponding symbol.
- (4) Unless the context otherwise requires, where a term is used but not defined, in this Local Law, and that term is defined in the Road Traffic Act or in the Code, then the term shall have the meaning given to it in the Act or Code.

1.5 Application of Local Law

- (1) Subject to sub-clause (2) this Local Law applies to the parking region.
- (2) This Local Law does not apply to a parking facility **that** is not occupied by the local government unless the local government and the owner or the occupier of that facility have agreed in writing that this Local Law will apply to that facility.
- (3) The agreement referred to in sub-clause (2) may be made on such terms and conditions as the parties may agree.
- (4) Where a parking facility or a parking station is identified in Schedule 1, then the facility or station shall be deemed to be a parking station to which this Local Law applies and it shall not be necessary to prove that it is the subject of an agreement referred to in sub-clause (2).
- (5) The provisions of Parts 2 to 7 do not apply to a bicycle parked at a bicycle rail or bicycle rack.

1.6 Vehicle and Driver Classification

- (1) For the purpose of this Local Law vehicles are divided into the following classes—
 - (a) buses;
 - (b) caravans;
 - (c) motorcycles and bicycles;
 - (d) taxis;
 - (e) commercial vehicles;
 - (f) tractors;
 - (g) heavy vehicles; and
 - (h) all other vehicles not otherwise classified.
- (2) For the purpose of this Local Law, drivers are divided into the following classes—
 - (a) authorised persons;
 - (b) employees of the City;
 - (c) customers or patrons of a shop, shopping centre, facility or event;
 - (d) persons who work in a shop or shopping centre; and
 - (e) all other persons not otherwise classified.

1.7 Application and Interpretation of Signs

- (1) Where the stopping or parking of vehicles in a thoroughfare is regulated by a sign, then the sign shall for the purposes of this Local Law apply to that part of the thoroughfare which—
 - (a) lies beyond the sign;
 - (b) lies between the sign and the next sign beyond that sign; and
 - (c) is on that side of the thoroughfare nearest to the sign.
- (2) For the purposes of this Local Law a sign may prohibit or regulate parking or stopping by the use of any symbol.
- (3) A sign regulating the parking or stopping of vehicles is presumed to be, in the absence of evidence to the contrary, a sign placed, marked or erected under the authority of this Local Law.
- (4) An inscription or symbol on a sign operates and has effect according to its tenor, and where the inscription or symbol relates to the stopping of vehicles, it shall be deemed for the purposes of this Local Law to operate and have effect as if it also related to the parking of vehicles.

- (5) A sign that—
- (a) was erected by the local government or the Commissioner of Main Roads prior to the coming into operation of this Local Law; and
 - (b) relates to the parking of vehicles within the parking region, shall be deemed for the purposes of this Local Law to have been erected by the local government under the authority of this Local Law.

1.8 Powers of the local government

The local government may, by resolution, prohibit or regulate by signs or otherwise, the stopping or parking of any vehicle, any class of vehicles or any class of drivers in any part of the parking region but must do so consistently with the provisions of this Local Law.

PART 2—PARKING STATIONS

2.1 Establishment of Parking Stations

- (1) The local government may constitute any land or structure as a parking station by—
- (a) resolution of the Council; or
 - (b) inclusion of a description of the land or structure in Schedule 1.
- (2) A parking station constituted under sub-clause (1) may be varied as to the land or structures which it comprises by—
- (a) resolution of the Council; or
 - (b) an amendment to the description in Schedule 1.
- (3) The local government may indicate the constitution or variation of a parking station by signs.
- (4) In relation to a parking station, the local government may determine and indicate by signs the —
- (a) location of parking spaces within a parking station;
 - (b) permitted times and conditions of parking or stopping a vehicle;
 - (c) classes of vehicles permitted to park or stop;
 - (d) classes of persons permitted to park or stop a vehicle; and
 - (e) manner of parking or stopping a vehicle.

2.2 Fees for Parking Stations

- (1) The local government may impose and determine a fee for the stopping or parking of a vehicle in a parking station under and in accordance with sections 6.16 to 6.19 of the Act.
- (2) A reference in this Part to a “fee” means a fee imposed in accordance with sub-clause (1).

2.3 Conditions of Parking in a Parking Station

- (1) A person shall not park or stop a vehicle or permit a vehicle to remain parked in any parking station during any period for which a fee is payable unless—
- (a) in the case of a parking station having an attendant on duty, the person pays the appropriate fee when demanded; or
 - (b) in the case of a parking station equipped with a ticket issuing machine, the person—
 - (i) inserts the appropriate fee in the ticket issuing machine or makes such other permitted form of payment which is indicated on the machine; and
 - (ii) obtains a parking ticket from the machine.
- (2) The local government may by resolution declare that sub-clause (1) shall not apply in a parking station during periods or on particular days specified in that resolution.

2.4 Display of Tickets

A person shall not stop or park a vehicle in a parking station equipped with a ticket issuing machine during any period for which a fee is payable unless an unexpired parking ticket applicable to that parking station is —

- (a) displayed inside the vehicle; and
- (b) displayed so that the date, expiry time and the number (if any) on the ticket are clearly visible to and able to be read by an authorised person from outside the vehicle, at all times while the vehicle remains stopped or parked in the parking station.

2.5 Lost Tickets

If provision is made in any parking station for payment of a fee on the departure of a vehicle, and the ticket issued when a vehicle entered the parking station is not produced on the departure of the vehicle, the fee payable shall be calculated from the time the parking station was opened on that day to the time of the departure of the vehicle.

2.6 Removal of Vehicles

A person shall not remove a vehicle which has been parked in a parking station until he or she pays the appropriate fee.

2.7 Parking Within a Parking Space

A person shall not stop or park a vehicle in a parking station, other than wholly within a parking space.

2.8 Prohibitions on Stopping or Parking

- (1) A person shall not stop a vehicle in any part of a parking station—
 - (a) if the stopping of a vehicle in that part is prohibited by a sign; or
 - (b) during a period in which the stopping or parking of vehicles in that part is prohibited by a sign.
- (2) A person shall not park a vehicle on any part of a parking station—
 - (a) if the parking of vehicles on that part is prohibited by a sign;
 - (b) during a period in which the parking of vehicles on that part is prohibited by a sign;
 - (c) if a sign specifies that part is for the parking of vehicles -
 - (i) of a different class; or
 - (ii) driven by a person of a different class;
 - (d) for more than the maximum time specified by a sign; or
 - (e) so as to obstruct an entrance to, or an exit from a parking station, or an access way within the parking station.

2.9 Special Event Parking

- ~~(1) The local government may by use of signs set aside, for any period specified on the signs, any parking station, parking facility or other land owned or controlled by the local government for the parking of vehicles by persons attending a special event.~~
- ~~(2) A person shall not park or stop a vehicle in a parking station, parking facility or land owned or controlled by the local government set aside under sub-clause (1) during the period for which it is set aside, unless a ticket purchased from the City with respect to the special event is displayed in the vehicle and is clearly visible to and readable by an authorised person from outside the vehicle.~~
- ~~(3) A fee payable for special event parking may be determined and imposed by the local government.~~
- ~~(4) For the purpose of this clause, “special event” means any event or occurrence considered by the local government to be special or likely to attract a substantial number of persons driving vehicles.~~
- ~~(5) During the period referred to in sub-clause (1) the provisions of clauses 2.8(1)(b) and 2.8(2)(b) & (d) shall not apply to the parking station.~~

2.9 Behaviour in Parking Stations

A person shall not—

- (a) remain in or on a parking station after having been directed to leave that parking station by an authorised person;
- (b) permit a vehicle to park on any part of a parking station, if an authorised person directs the driver of such vehicle to move the vehicle;
- (c) drive in a parking station in a direction other than the direction indicated by arrows.

2.10 Parking Stations May be Locked

At the expiration of the hours of operation of a parking station, the local government whether or not any vehicle remains parked in a parking station may lock the parking station or otherwise prevent the movement of any vehicle within, to or from it.

2.11 Selling and Hiring in Parking Stations

No person shall at or on any part of a parking station sell, hire, give away, offer or expose for sale or hire anything of any nature, unless that person has the prior written permission of the local government to do so.

2.12 Authorised Spaces in Parking Stations

- (1) The local government may by use of signs set aside any parking station or any parking space or spaces in a parking station for the parking of vehicles by persons authorised by the local government.
- (2) Where the local government authorises a person pursuant to sub-clause (1) the local government—
 - (a) shall issue a written permit to the person; and
 - (b) may revoke the permit at any time.
- (3) A person shall not park or stop a vehicle in a parking space set aside under this clause unless a permit issued with respect to the vehicle is displayed inside the vehicle and is clearly visible to and readable by any authorised person examining the permit from outside the vehicle.

2.13 Damage to Parking Stations

A person shall not remove, damage, deface, misuse or interfere with any part of a parking station or parking facility, or attempt to do so.

2.14 Operation of Ticket Issuing Machines

- (1) A person shall not operate or attempt to operate a ticket-issuing machine except in accordance with the operating instructions appearing on the ticket-issuing machine.
- (2) A person shall not insert or cause to be inserted or attempt to insert into a ticket issuing machine anything other than the money which is appropriate for the machine, or such other permitted form of payment which is indicated on the machine.

2.15 Damage to Ticket Issuing Machines

A person shall not remove, damage, deface, misuse or interfere with any ticket issuing machine or attempt to do any such act.

2.16 Defacing a Parking Ticket

A person shall not display in a vehicle a ticket purchased from a ticket issuing machine or from any other place authorised by the local government if the ticket has been altered, added to or defaced in any way in an attempt to avoid payment of the appropriate fee.

PART 3—PARKING ON THOROUGHFARES

3.1 Stopping or Parking Contrary to Signs

- (1) A person shall not stop or park a vehicle on a thoroughfare, or portion of a thoroughfare, —
- (a) if it is set apart by a sign for the stopping or parking of vehicles of a different class;
 - (b) if it is set apart by a sign for the stopping or parking of vehicles by persons of a different class;
 - (c) during any period when the stopping or parking of vehicles is prohibited by a sign;
 - (d) the side of which is marked with a continuous yellow edge line;
 - (e) other than wholly within a parking space if the part of the thoroughfare upon which the vehicle is standing or parked is provided with parking spaces;
 - (f) to which a “no stopping” sign applies; and
 - (g) to which a “no parking” sign applies, unless the driver is—
 - (i) dropping off, or picking up, passengers or goods;
 - (ii) does not leave the vehicle unattended; and
 - (iii) completes the dropping off, or picking up, of the passengers or goods within 2 minutes of stopping and drives on,

“**unattended**”, in relation to a vehicle, means that the driver has left the vehicle so that the driver is more than 3 metres from the closest point of the vehicle.

- (2) A person shall not stop or park a vehicle on any part of a thoroughfare, whether or not that part is marked as a parking space, for more **than** the maximum time specified by a sign.

3.2 Occupied Parking Spaces

A person shall not stop or park or attempt to stop or park a vehicle in a parking space in which another vehicle is stopped or parked.

3.3 Median Strips and Traffic Islands

Subject to any law relating intersections with traffic control signals, a person shall not stop or park a vehicle on any part of a thoroughfare so that any portion of the vehicle is—

- (a) on a median strip;
- (b) adjacent to a median strip otherwise than in a parking space; or
- (c) on, or within 10 metres of any portion of a carriageway bounded on one or both sides by a traffic island.

3.4 Parking vehicle on a carriageway

- (1) A person parking a vehicle on a carriageway other than in a parking space shall park it—
- (a) in the case of a two-way carriageway, so that it is as near as practicable to and parallel with, the left boundary of the carriageway and headed in the direction of the movement of traffic on the side of the thoroughfare on which the vehicle is parked;
 - (b) in the case of a one-way carriageway, so that it is as near as practicable to and parallel with either boundary of the carriageway and headed in the direction of the movement of traffic on the side of the thoroughfare on which the vehicle is parked;
 - (c) so that at least 3 metres of the width of the carriageway lies between the vehicle and the farther boundary of the carriageway, or any continuous line or median strip, or between the vehicle and a vehicle parked on the farther side of the carriageway;
 - (d) so that the front and the rear of the vehicle respectively are not less than 1 metre from any other vehicle, except a motorcycle without a trailer, or a bicycle parked in accordance with this Local Law; and
 - (e) so that it does not obstruct any vehicle on the carriageway,
 - (f) unless otherwise indicated on a parking regulation sign or markings on the roadway.

(2) In this clause, “continuous dividing line” means—

- (a) a single continuous dividing line only;
- (b) a single continuous dividing line to the left or right of a broken dividing line; or
- (c) 2 parallel continuous dividing lines.

3.5 When parallel and right-angled parking apply

Where a traffic sign associated with a parking area is not inscribed with the words “angle parking” (or with an equivalent symbol depicting this purpose), then unless a sign associated with the parking area indicates, or marks on the carriageway indicate, that vehicles have to park in a different position, where the parking area is—

- (a) adjacent to the boundary of a carriageway, a person parking a vehicle in the parking area shall park it as near as practicable to and parallel with that boundary; and
- (b) at or near the centre of the carriageway, a person parking a vehicle in that parking area shall park it at approximately right angles to the centre of the carriageway.

3.6 When angle parking applies

(1) Subject to sub-clause (2), where a sign associated with a parking area is inscribed with the words “angle parking” (or with an equivalent symbol depicting this purpose), a person parking a vehicle in the area shall park the vehicle at an angle of approximately 45 degrees to the centre of the carriageway unless otherwise indicated by the inscription on the parking sign or by marks on the carriageway.

(2) This clause does not apply to—

- (a) a passenger vehicle or a commercial vehicle with a mass including any load, of over 3 tonnes; or
- (b) a person parking either a motorcycle without a trailer or a bicycle.

3.7 Parking Near Fire Hydrant or Public Post Box

(1) A person shall not stop or park a vehicle on a thoroughfare so that any portion of the vehicle is within 1 metre of a fire hydrant or fire plug, or of any sign or mark indicating the existence of a fire hydrant or fire plug.

(2) A person shall not stop or park a vehicle on a thoroughfare so that any portion of the vehicle is within—

- (a) 3 metres **from** a public post box; or
- (b) within a mail zone,

unless the vehicle is being used for the purpose of collecting postal articles from the post-box.

3.8 Traffic Obstructions

Subject to any law relating to intersections with traffic control signals, a person shall not stop or park a vehicle so that any portion of the vehicle is—

- (c) in front of a right of way, crossover, passage or private drive or so close to one as to deny vehicles reasonable access to, or egress from, the right of way, crossover, passage or private drive;
- (d) upon an intersection except adjacent to a carriageway boundary that is not broken by an intersecting carriageway;
- (e) within 10 metres of the nearest property line of any thoroughfare intersecting the thoroughfare on the side on which the vehicle is parked;
- (f) alongside any excavation, works, hoarding, scaffolding or obstruction on the carriageway, if the vehicle would obstruct traffic;
- (g) in a cul-de-sac so as to obstruct the turning of vehicles within the cul-de-sac; or
- (h) on or over a footpath or a place of refuge for pedestrians,

unless a sign or markings on the carriageway indicate otherwise.

3.9 Double Parking

- (1) A person shall not stop or park a vehicle on a thoroughfare so that any portion of the vehicle is between any other stopped or parked vehicle and the centre of that thoroughfare.
- (2) This clause does not apply to a driver stopped in traffic.

3.10 Verge Parking

- (1) A person shall not stop or park a vehicle on a verge where signs prohibit the stopping or parking of vehicles on that verge.
- (2) A person, not being the occupier of the land abutting onto a verge, shall not without consent of that occupier, drive, park or stop a vehicle upon that verge.
- (3) A person shall not park a commercial vehicle on a verge unless it is being loaded or unloaded with reasonable expedition with goods, merchandise or materials collected from or delivered to the premises adjacent to the portion of the verge on which the commercial vehicle is parked, provided no obstruction is caused to the passage of any vehicle or person using a carriageway or a path.

3.11 Bus Stops, Pedestrian, Railway and Children's Crossing

- (1) A person shall not stop or park a vehicle on a thoroughfare so that any portion of the vehicle is within 10 metres of the departure side of—
 - (a) a sign inscribed with the words "Bus Stop" or "Hail Bus Here" (or with equivalent symbols depicting these purposes), unless that vehicle is a bus taking up or setting down passengers; or
 - (b) a pedestrian crossing or a children's crossing established on a thoroughfare.
- (2) A person shall not stop or park a vehicle on a thoroughfare so that any portion of the vehicle is within 20 metres of the approach side of—
 - (a) a sign inscribed with the words "Bus Stop" or "Hail Bus Here" (or with equivalent symbols depicting these purposes), unless that vehicle is a bus taking up or setting down passengers; or
 - (b) a pedestrian crossing or a children's crossing established on a thoroughfare.
- (3) A driver shall not stop in a bus zone unless the driver is driving a public bus or a bus of a type that is permitted to stop at the bus zone by information on or with the "bus zone" sign applying to the bus zone.
- (4) A person shall not park a vehicle so that any portion of the vehicle is within 20 metres of either the approach side or the departure side of the nearest rail of a railway level crossing.

3.12 No Parking within One Hour

Where a person parks a vehicle in a thoroughfare where parking is restricted as to time, that person shall not park that vehicle again in the same thoroughfare on that day unless it has first been removed from the thoroughfare for at least 1 hour.

3.13 Direction to Move Vehicles

A driver of a vehicle shall not permit a vehicle to stop or park on any part of a thoroughfare or public reserve if an authorised person directs the driver to move it.

3.14 Stopping in a Loading Zone

A person shall not stop a vehicle in a loading zone unless it is—

- (a) a motor vehicle used for commercial, or trade purposes engaged in the picking up or setting down of goods; or
- (b) a motor vehicle taking up or setting down passengers, but, in any event, shall not remain in that loading zone—
 - (i) for longer than a time indicated on the 'loading zone' sign; or
 - (ii) longer than 30 minutes (if no time is indicated on the sign).

3.15 Stopping in a taxi zone

A driver shall not stop in a taxi zone, unless the driver is driving a taxi.

3.16 No parking of vehicles exposed for sale and in other circumstances

A person shall not park a vehicle on any portion of a thoroughfare—

- (a) for the purpose of exposing it for sale;
- (b) if that vehicle is not licensed under the Road Traffic Act;
- (c) if that vehicle is a trailer or a caravan unattached to a motor vehicle; or
- (d) for the purpose of effecting repairs to it, other than the minimum repairs necessary to enable the vehicle to be moved to a place other than a thoroughfare.

PART 4—STOPPING AND PARKING GENERALLY

4.1 Parking and Stopping of Bicycles

A person shall not park or stop any bicycle in a parking space, unless the parking space is marked “M/C”.

4.2 Authorised Parking

A person shall not, without the permission of the local government or an authorised person, stop or park a vehicle, other than an authorised vehicle, in an area designated by signs for the parking of authorised vehicles only.

4.3 Private Property

(1) In this clause, a reference to “land” does not include land which is—

- (a) a public reserve;
- (b) the subject of an agreement referred to in clause 5(2); or
- (c) a parking station.

(2) A person shall not park a vehicle on land without the consent of the owner or occupier of the land on which the vehicle is parked.

(3) The consent referred to in sub-clause (2) may be given subject to any conditions which are specified on a sign, and a person shall not park a vehicle on the land otherwise than in accordance with the consent.

4.4 Stopping heavy, commercial and other types of vehicles in built up area

(1) A person shall not park—

- (a) a vehicle or any combination of vehicles that, together with any projection on, or load carried by, the vehicle or combination of vehicles, is 7.5 metres or more in length or exceeds a GVM of 4.5 tonne;
- (b) a commercial vehicle;
- (c) a caravan;
- (d) a bus;
- (e) a tow truck;
- (f) a tractor; or
- (g) a trailer,

on a carriageway or verge in a built-up area between the hours of 6.00 pm one day and 7.00 am the following day and for more than three hours consecutively between the hours of 7.00 am and 6.00 pm.

(2) Nothing in this clause mitigates the limitations or conditions imposed by any other clause or by any Local Law or traffic sign relating to the parking or stopping of vehicles.

4.5 Marking of Tyres

(3) An authorised person may mark the tyres of a parked vehicle with chalk or any other non-indelible substance for any purpose connected with or arising out of that authorised person’s duties and powers.

(4) A person shall not remove a mark made by an authorised person so the purpose of the affixing of such mark is defeated or likely to be defeated.

4.6 Parking on Public Reserves

A person shall not stop or park a vehicle in a public reserve, other than within a parking facility or parking station on that reserve, unless the person is an employee of the City in the course of her or his duties, or has obtained the permission of the local government or an authorised person.

4.7 No Obstruction of Public Places

- (1) A person shall not park a vehicle in a public place so as to cause an obstruction.
- (2) For the purposes of sub-clause (1)—
 - (a) a vehicle which is parked in any portion of a public place where vehicles may not lawfully be parked is deemed to be causing an obstruction;
 - (b) a vehicle that is parked in any portion of a public place where vehicles may lawfully be parked does not cause an obstruction, unless—
 - (i) the vehicle is so parked for any period exceeding 24 hours, without the consent in writing of the CEO or an authorised person; or
 - (ii) the vehicle is so parked during any period in which the parking of vehicles is prohibited or restricted by a sign.

4.8 Impounding of Vehicles

The impounding of vehicles and other goods shall be carried out in accordance with sections 3.37 to 3.48 of the Act and Regulation 29 of the *Local Government (Functions and General) Regulations 1996*.

4.9 Stopping in a parking area for people with disabilities

- (1) A driver shall not stop in a parking area for people with disabilities unless—
 - (a) the driver's vehicle displays an ACROD sticker; and
 - (b) either the driver or a passenger in that vehicle is a person with disabilities.
- (2) In this clause a "parking area for people with disabilities" is a length or area—
 - (a) to which a "permissive parking" sign displaying a people with disabilities symbol applies;
 - (b) to which a "people with disabilities parking" sign applies;
 - (c) indicated by a road marking (a "people with disabilities road marking") that consists of, or includes, a people with disabilities symbol; or
 - (d) set aside within a parking region as a "parking bay for use of a disabled person" under the *Local Government (Parking for Disabled Persons) Regulations 1988*.

4.10 Restrictions on parking in particular areas

- (1) Subject to subclause (2), a person shall not park a vehicle in a thoroughfare or part of a thoroughfare, or part of a parking station –
 - (a) If by a sign it is set apart for the parking of vehicles of a different class;
 - (b) If by a sign it is set apart for the parking of vehicles by persons of a different class; or
 - (c) During any period when the parking is prohibited by a sign.
- (2) If –
 - (a) the driver's vehicle displays an ACROD sticker; and
 - (b) a disabled person to which the ACROD sticker relates is either the driver of the vehicle or a passenger in the vehicle,

the driver may park a vehicle in a thoroughfare or a part of a thoroughfare or part of a parking station, except in a thoroughfare or a part of a thoroughfare or part of a parking station to which a disabled parking sign relates, for twice the period indicated on the sign.
- (3) A person shall not park a vehicle –
 - (a) in a no parking area;

- (b) in a parking area, except in accordance with both the signs associated with the parking area and with this Local Law;
- (c) in a space marked “M/C” unless it is a motorcycle without a sidecar or a trailer, or it is a bicycle.

PART 5—RESIDENTIAL PARKING PERMITS

5.1 Residential Parking Permit

- (1) A maximum of 3 residential parking permits may be issued for each residential lot fronting or with vehicle access to and from the thoroughfare.
- (2) An application for parking permit shall be made in the form determined by the local government.
- (3) The local government may in respect of an application for a permit for the purpose of sub-clause (1)—
 - (a) approve it;
 - (b) approve it subject to such conditions as the local government considers appropriate; or
 - (c) refuse to approve it.
- (4) Where the local government makes a decision under sub-clause (3), it shall issue a permit in the form determined by it to the person who applied for the permit.
- (5) A permit issued for the purpose of sub-clause (1) will be issued for a period not exceeding one (1) year and expiring on 31 December in the year of issue.
- (6) Every permit issued for the purpose of sub-clause (1) is to specify—
 - (a) a permit number;
 - (b) the name of the thoroughfare to which the exemption granted by clause 5.2 applies; and
 - (c) the date on which that permit expires.

5.2 Conditions of Exemption for Residential Parking Permits

Where parking of a vehicle on any part of a thoroughfare within the district is prohibited for more than a specified time, the holder of a permit issued under clause 5.1 is exempted from such prohibitions if—

- (a) The vehicle is parked on a thoroughfare or portion of a thoroughfare specified in the permit, but not adjacent to retail premises where the parking of all vehicles is subject to a time restriction.
- (b) The permit is displayed in the vehicle in a prominent position.
- (d) The period in respect of which the permit was issued has not expired.
- (e) The holder of the permit at the time of parking the vehicle still resides at the residential lot in respect of which the permit was issued.

5.3 Removal and cancellation of residential parking permit

The holder of a permit issued under clause 5.1 who changes residence shall remove the permit from the vehicle to which it is affixed, and the permit shall be deemed to be cancelled on and from the date the holder changes residence.

PART 6—METERED ZONES

6.1 Determination of metered zones

- (1) The local government may by resolution constitute, determine and vary and also indicate by signs, metered spaces and metered zones.
- (2) In respect of metered spaces and metered zones the local government may by resolution determine, and may indicate by signs—
 - (a) permitted times and conditions of parking depending on and varying with the locality;
 - (b) classes of vehicles which are permitted to park;
 - (c) the amount payable for parking; and
 - (d) the manner of parking.

6.2 Parking fee to be paid

Subject to clause 6.5, a person shall not park a vehicle in a metered space unless the appropriate fee as indicated by a sign on the parking meter referable to the space is inserted into the parking meter.

6.3 Limitation on parking in metered space

The payment of a fee under clause 6.2 shall entitle a person to park the vehicle in a metered space for the period shown on the parking meter, but does not authorise the parking of the vehicle during any time when parking in that space may be prohibited in accordance with this Local Law.

6.4 No parking when meter is expired

Subject to clause 6.5, a person shall not leave or permit a vehicle to remain parked in a metered space during the hours when a fee is payable to park the vehicle in the space when the parking meter referable to that space exhibits the sign “Expired” or a negative time.

6.5 Suspension of requirement to pay fee

The local government may from time to time by a resolution declare that the provisions of clauses 6.2 and 6.4 shall not apply during the periods and days specified in the resolution.

6.6 Vehicles to be within metered space

Subject to subclause (b)—

(a) A person shall not park a vehicle in a metered space in a thoroughfare otherwise than parallel to and as close to the kerb as practicable and wholly within the space, provided that where a metered space is set out otherwise than parallel to the kerb the vehicle need only park wholly within the space.

(b) If a vehicle is too long or too wide to fit completely within a single metered space then the person parking the vehicle shall do so within the minimum number of metered spaces needed to park that vehicle.

(c) A person shall not park a vehicle partly within and partly outside a metered zone.

6.7 Permitted insertions in parking meters

- (1) A person shall not insert into a parking meter anything other than the designations of coin or banknote or such other permitted form of payment indicated by a sign on the parking meter.
- (2) The insertion of a coin or banknote into any parking meter or the making of payment in such other form as may be permitted shall be effected only in accordance with the instructions printed on that particular meter.

6.8 Parking ticket to be clearly visible

A driver of a vehicle left parked in a metered zone which is regulated by a ticket issuing machine shall on purchasing a ticket from the machine for a period of parking, place the ticket inside the vehicle in such a position that the ticket is clearly visible to and the expiry time or time for which the ticket remains valid is able to be read by an authorised person examining the ticket from outside the vehicle.

6.9 One vehicle per metered space

A person shall not park or attempt to park a vehicle in a metered space in which another vehicle is parked.

6.10 No parking when hood on meter

Notwithstanding any other provision of this Local Law and notwithstanding any other sign or notice, a person shall not park a vehicle in a metered space if the parking meter referable to such metered space has a hood marked “No Parking”, “Reserved Parking” or “Temporary Bus Stand” or equivalent symbols depicting these purposes except with the permission of the local government or an authorised person.

PART 7—MISCELLANEOUS

7.1 Affixing Signs and Notices

A person shall not without the permission of the local government—

- (a) affix any board, sign, placard, notice or other thing to or paint or write upon any part of a sign, ticket issuing machine, parking facility or parking station; or
- (b) place, mark or erect a sign purporting to be or resembling a sign placed, marked or erected by the local government under this Local Law.

7.2 No Contravention of Sign

A person shall not contravene the direction of a sign erected by the local government under this Local Law.

7.3 Removal of Notice from Vehicle

A person other than the driver of the vehicle or a person acting under the direction of the driver, shall not remove from that vehicle any notice affixed to or put on it by an authorised person under this Local Law.

7.4 Offence

Any person who contravenes or fails to comply with a provision of this Local Law commits an offence and is liable upon conviction to a penalty not exceeding \$5,000, and if the offence is of a continuing nature, to an additional penalty not exceeding \$500 for each day or part of a day during which the offence has continued.

7.5 Prescribed Offences and Modified Penalties

- (1) An offence against a clause specified in Schedule 2 is a prescribed offence for the purposes of section 9.16(1) of the Act.
- (2) The amount of the modified penalty for a prescribed offence is that specified in Column 4 of Schedule 2 adjacent to the clause.

7.6 Forms

For the purposes of this Local Law —

- (a) The form of the notice referred to in section 9.13 of the Act is that of Form 1 in Schedule 3;
 - (b) The form of the infringement notice referred to in section 9.17 of the Act is that of Form 2 in Schedule 3;
 - (c) The form of the infringement notice referred to in section 9.17 of the Act which incorporates the notice referred to in section 9.13 of the Act, is that of Form 3 in Schedule 3; and
 - (d) The form of the infringement withdrawal notice referred to in section 9.20 of the Act is that of Form 4 in Schedule 3.
-

Schedule 1

Local Government Act 1995

PARKING AND PARKING FACILITIES LOCAL LAW 2009

DEEMED PARKING STATIONS

- **Parking - Albany (Harry Riggs) Regional Airport:**

- Lot 214, 131 Parker Brook Road
- Lot 4861, 35615 Albany Highway
- Lot 5643, 35615 Albany Highway

- **Parking - Albany Central Business District (CBD)**

- Lot 2, 2 Toll Place
- Lot 2, 20 Proudlove Parade
- Lot 2, 43-45 Aberdeen Street
- Lot 2, 49 Aberdeen Street
- Lot 3, 15-21 Aberdeen Street
- Lot 5, 190-192 York Street
- Lot 6, 184-188 York Street
- Lot 7, 184-188 York Street
- Lot 8, 104-110 Stirling Terrace
- Lot 8, 162-164 York Street
- Lot 9, 112-140 Stirling Terrace
- Lot 9, 156-158 York Street
- Lot 12, 47 Aberdeen Street
- Lot 13, 270-284 York Street
- Lot 15, 194-208 York Street
- Lot 16, 51-59 Aberdeen Street
- Lot 16, 87 Frederick Street
- Lot 20, 339-347 Middleton Road
- Lot 23, 139-141 Aberdeen Street
- Lot 27, 112-140 Stirling Terrace
- Lot 28, 112-140 Stirling Terrace
- Lot 32, 4 St Emilie Way
- Lot 50, 104-110 Stirling Terrace
- Lot 50, Peels Place
- Lot 64, 21A Albany Highway
- Lot 66, 162-164 York Street
- Lot 66, 190-192 York Street
- Lot 67, 47 Aberdeen Street
- Lot 67, York Street
- Lot 75, 112-140 Stirling Terrace
- Lot 92, 16-24 Peels Place
- Lot 111, 221-227 York Street
- Lot 112, 126-140 Grey Street Wes
- Lot 123, 148-154 York Street
- Lot 123, 229-237 York Street
- Lot 123, 96-102 Stirling Terrace
- Lot 202, 35-41 Aberdeen Street
- Lot 203, 23-33 Aberdeen Street
- Lot 205, 176-178 York Street
- Lot 500, 51-61 Serpentine Road
- Lot,1396, 36-46 Proudlove Parade
- Lot 1397, Proudlove Parade
- Lot 1399, Proudlove Parade
- Lot 1407, Proudlove Parade
- Lot 1521, 62 Proudlove Parade

- **Parking - Centennial Parking Sporting Precinct & North Road Administration**

- Lot 32, 49-55 North Road
- Lot 101, 197-201 North Road
- Lot 177, 27-47 North Road
- Lot 178, 27-47 North Road
- Lot 727, 41-55 Kitchener Road
- Lot 728, 31-39 Kitchener Road
- Lot 730, Barker Road
- Lot 735, 51-67 Barker Road
- Lot 736, 69-73 Barker Road
- Lot 737, 36-48 Kitchener Road
- Lot 738, 187 North Road
- Lot 739, 159 North Road
- Lot 740, 143-149 North Road
- Lot 741, 143-149 North Road
- Lot 742, 52-70 Barker Road
- Lot 743, 50 Barker Road
- Lot 744, 81-95 Sanford Road
- Lot 1235, 161 North Road
- Lot 1255, Barker Road
- Lot 1262, Reserve 34381 Wellington Street
- Lot 1264, 161 North Road
- Lot 1265, 161 North Road
- Lot 1270, Barker Road
- Lot 1359, 156 Lockyer Avenue
- Lot 4743, 102 North Road

- **Parking - Emu Point**

- Lot 501, Swarbrick Street
- Lot 1461, 13-17 Hunter Street

- **Parking - Middleton Beach & Eyre Park**

- Lot 2, 5-13 Garden Street
- Lot 500, Flinders Parade
- Lot 502, Golf Links Road
- Lot 1386, 54-62 Golf Links Road

Schedule 2
Local Government Act 1995
PARKING AND PARKING FACILITIES LOCAL LAW 2009

PRESCRIBED OFFENCES

ITEM	CLAUSE	NATURE OF OFFENCE	MODIFIED PENALTY \$
1	2.4	Failing to display unexpired parking ticket in a parking station	45
2	2.7	Parking outside a parking space in a parking station.	45
3	2.8(1)(a)	Stopping in a no stopping area in a parking station.	45
4	2.8(1)(b)	Stopping during a prohibited period in part of a parking	60
5	2.8(2)(a)	Parking in a no parking area in a parking station	60
6	2.8(2)(b)	Parking during a prohibited period on part of a parking station.	45
7	2.8(2)(c)	Parking in a parking station space set aside for a different class of vehicle or driver.	45
8	2.8(2)(d)	Parking for more than the maximum period in a parking Station	45
9	2.8(2)(e)	Parking so as to obstruct an entrance, exit or access way within a parking station	60
10	2.9(2)	Parking without a ticket in a parking space set aside for a special event	60
10	2.12(3)	Parking in an authorised space in a parking station without a permit	60
11	3.1(1)(a)	Stopping or parking on part of a thoroughfare set aside for vehicles of a different class	60
12	3.1(1)(b)	Stopping or parking on part of a thoroughfare set aside for drivers of a different class	60
13	3.1(1)(c)	Stopping or parking on part of a thoroughfare during a prohibited period	60
14	3.1(1)(d)	Stopping or parking on part of a thoroughfare marked with a yellow line	60
15	3.1(1)(e)	Parking on a thoroughfare other than wholly within a marked parking space	60
16	3.1(1)(f)	Stopping or parking on part of a thoroughfare to which a 'no stopping' sign applies	60
17	3.1(1)(g)	Stopping or parking on part of a thoroughfare to which a 'no parking' sign applies	60
18	3.1(2)	Parking on a thoroughfare for more than specified maximum time	60
19	3.2	Stopping or parking in an occupied parking space	60
20	3.3	Stopping or parking on or adjacent to a median strip	60
21	3.4(1)(a)	Failure to park as near as practicable to and parallel with the left boundary of two-way carriageway	60
22	3.4(1)(b)	Failure to park as near as practicable to and parallel with boundary of one-way carriageway	60
23	3.4(1)(a) or 3.4(1)(b)	Parking against flow of traffic on carriageway	60
24	3.4(1)(c)	Parking when distance from farther boundary less than 3 metres	45
25	3.4(1)(d)	Parking closer than 1 metre from another vehicle	45
26	3.4(1)(e)	Causing obstruction on carriageway	60
27	3.5(b)	Failure to park at approximate right angle	45
28	3.6(1)	Failure to park at an appropriate angle	45
29	3.7(1)	Stopping or parking within 1 metre of a fire hydrant	60
30	3.7(2)	Stopping or parking within 3 metres of a public post box or within a mail zone	60
31	3.8(a)	Stopping or parking in front of a driveway or right of way	60
32	3.8(b)	Parking on an intersection	60
33	3.8(c)	Parking within 10 metres of intersection	45
34	3.8(d)	Parking next to traffic obstruction	45
35	3.8(e)	Parking in a cul-de-sac so as to cause an obstruction	60
36	3.8(f)	Parking over a footpath	60
37	3.9	Double parking	60
38	3.10(1) or (2)	Stopping or parking on a verge contrary to signs or without Consent	60
39	3.10(3)	Stopping or parking a commercial vehicle on a verge	60
40	3.11(1)	Stopping or parking within 10 metres of the departure side of bus stop, pedestrian or children's crossings	60
41	3.11(2)	Stopping or parking within 20 metres of the approach side of bus stop, pedestrian or children's crossing	60
42	3.11(3)	Stopping in bus zone	60
43	3.11(4)	Parking vehicle within 20 metres of approach side or departure side of railway level crossing	60

ITEM	CLAUSE	NATURE OF OFFENCE	MODIFIED PENALTY \$
44	3.12	Parking vehicle again within 1 hour on a thoroughfare	45
45	3.13	Failing to move vehicle after direction by authorised person	60
46	3.14	Stopping a loading zone	60
47	3.15	Stopping in a taxi zone	60
48	3.16	Parking in thoroughfare for purpose of sale	60
49	4.1	Stopping or parking a bicycle in a parking space	60
50	4.2	Parking in authorised parking area without authorisation	60
51	4.3(2)	Parking on private property without consent of owner	60
52	4.4	Parking a heavy, commercial or other type of vehicle on road or verge	120
53	4.5	Removing authorised mark from tyres of parked vehicle	60
54	4.6	Parking on a public reserve	60
55	4.7	Parking so as to cause an obstruction in public place	60
56	4.9	Stopping in disabled parking area	120
57	4.10(1)(a)	Parking wrong class of vehicle	60
58	4.10(1)(b)	Parking by persons of a different class	60
59	4.10(1)(c)	Parking during a prohibited period	60
60	4.10(3)(a)	Parking in a no parking area	60
61	4.10(3)(b)	Parking contrary to signs or limitations	60
62	4.10(3)(c)	Parking vehicles in motor cycle area only area	60
63	5.3	Failure to remove permit when residence changed	45
64	6.2	Failure to pay fee for metered space	60
65	6.4	Parking when meter has expired	60
66	6.6(1)	Failure to park wholly within metered space	45
67	6.6(3)	Parking partly outside metered zone	60
68	6.7	Non-permitted insertion in parking meter	60
69	6.8	Failure to display ticket clearly in metered zone	45
70	6.9	Parking or attempting to park a vehicle in a metered space occupied by another vehicle	60
71	6.10	Parking contrary to a meter hood	60
72	7.4	All other offences not specified	45

Schedule 3
Local Government Act 1995
Parking and Parking Facilities Local Law 2009
Form 1

NOTICE TO OWNER OF VEHICLE INVOLVED IN OFFENCE

To:(1).....

of:(2).....

It is alleged that on / / at (3)

at (4)your vehicle

make: ;

model: ;

registration: ,

was involved in the commission of the following offence:

.....

.....

contrary to clauseof the Parking and Parking Facilities Local Law 2009.

You are required under section 9.13 of the Local Government Act 1995 to identify the person who was the driver or person in charge of the vehicle at the time when the offence is alleged to have been committed.

If you do not prove otherwise, you will be deemed to have committed the offence unless—

(a) within 28 days after being served with this notice—

(i) you inform the Chief Executive Officer or another authorised officer of the local government as to the identity and address of the person who was the driver or person in charge of the vehicle at the time the offence is alleged to have been committed; or

(ii) you satisfy the Chief Executive Officer that the vehicle had been stolen, or was being unlawfully used, at the time the offence is alleged to have been committed;

or

(b) you were given an infringement notice for the alleged offence and the modified penalty specified in it is paid within 28 days after the notice was given or such further time as is allowed.

(5)

(6)

Insert—

(1) Name of owner or “the owner”

(2) Address of owner (not required if owner not named)

(3) Time of alleged offence

(4) Location of alleged offence

(5) Signature of authorised person

(6) Name and title of authorised person giving notice

Schedule 3
Local Government Act 1995
Parking and Parking Facilities Local Law 2009
Form 2

INFRINGEMENT NOTICE

Serial No

Date / /

To: (1).....

of: (2).....

It is alleged that on / / at (3).....

at (4).....

in respect of vehicle—

make: ;

model: ;

registration: ;

you committed the following offence:

.....

.....

.....

contrary to clause of the Parking and Parking Facilities Local Law 2009.

The modified penalty for the offence is \$

If you do not wish to have a complaint of the alleged offence heard and determined by a court, the amount of the modified penalty may be paid to an authorised person at (5) within a period of 28 days after the giving of this notice.

If you take no action this infringement notice may be registered with the Fines Enforcement Registry after which your driver's licence or any vehicle licence held by you may be suspended or cancelled, **you may be disqualified from holding or obtaining a driver's licence or vehicle licence**. If the matter is registered with the Registry, additional costs will also be payable by you.

If the above address is not your current address or if you change your address, it is important that you advise us immediately. Failure to do so may result in your driver's licence or any vehicle licence you hold being suspended without your knowledge.

(6)

(7)

Insert—

(1) Name of alleged offender or "the owner"

(2) Address of alleged offender

(3) Time of alleged offence

(4) Location of alleged offence

(5) Place where modified penalty may be paid

(6) Signature of authorised person

(7) Name and title of authorised person giving notice

Schedule 3
Local Government Act 1995
Parking and Parking Facilities Local Law 2009
Form 3

INFRINGEMENT NOTICE

Serial No.
Date / /

To: (1)
of: (2)

It is alleged that on / / at (3)
at (4)
in respect of vehicle—

make: ;
model: ;
registration: ,

you committed the following offence -
.....
.....
.....

contrary to clause of the Parking and Parking Facilities Local Law 2009.

The modified penalty for the offence is \$

If you do not wish to have a complaint of the alleged offence heard and determined by a court, the amount of the modified penalty may be paid to an authorised person at 102 North Road, Yakamia within a period of 28 days after the giving of this notice.

Unless within 28 days after being served with this notice—

- (a) you pay the modified penalty; or
- (b) you -
 - (i) inform the Chief Executive Officer or another authorised officer of the local government as to the identity and address of the person who was the driver or person in charge of the above vehicle at the time the offence is alleged to have been committed; or
 - (ii) satisfy the Chief Executive Officer that the above vehicle had been stolen or was being unlawfully used at the time the offence is alleged to have been committed, you will, in the absence of proof to the contrary, be deemed to have committed the above offence and court proceedings may be instituted against you.

If you take no action this infringement notice may be registered with the Fines Enforcement Registry after which your driver's licence or any vehicle licence held by you may be suspended. If the matter is registered with the Registry additional costs will also be payable.

If the above address is not your current address, or if you change your address, it is important that you advise us immediately. Failure to do so may result in your driver's licence or any vehicle licence you hold being suspended without your knowledge.

(5)
(6)

Insert—

- (1) Name of owner or "the owner"
 - (2) Address of owner (not required if owner not named)
 - (3) Time of alleged offence
 - (4) Location of alleged offence
 - (5) Signature of authorised person
 - (6) Name and title of authorised person giving notice
- _____

Schedule 3
Local Government Act 1995
Parking and Parking Facilities Local Law 2009

Form 4

WITHDRAWAL OF INFRINGEMENT NOTICE

Serial No
Date / /

To: (1)
of: (2)
Infringement Notice No. dated / /
in respect of vehicle—
make: ;
model: ;
registration: ;

for the alleged offence of:
.....
.....
.....
has been withdrawn.

The modified penalty of \$
• has been paid and a refund is enclosed.
• has not been paid and should not be paid.
delete as appropriate.

(3)
(4)

Insert—

- (1) Name of alleged offender to whom infringement notice was given or “the owner”.
- (2) Address of alleged offender.
- (3) Signature of authorised person
- (4) Name and title of authorised person giving notice

Dated: 20 November 2009.

The Common seal of the City of Albany was affixed by the authority of a resolution of the Council in the presence of

Milton Evans, JP
Mayor

Paul Richards
Chief Executive Officer

Document Revision History		
Version	Version Description	Date
1.0	<p>Local Government: Albany City Gazette Date: 12/02/2010 Page Number: 611–26 Action Type: Adopt Title: Parking and Parking Facilities Local Law 2009 Notes:</p> <ul style="list-style-type: none"> City of Albany Parking and Parking Facilities Amendment Local Law 2012. Appended with Airport Parking Determination. 	14/12/2017
1.1	<p>Document Reference: NLL1775384 Amendment: Section 4.10(c) was incorrect and now reads 4.10(3). This reflects the written law, as proclaimed (Gazette No 22, 12 February 2010 refers).</p>	21/02/2018
1.2	<p>Document Reference: NLL19104927 Update of Schedule 1 of the Local Law. Reference: OCM 24/09/2019 Resolution DIS175. Schedule 1 – Deemed Parking Stations Schedule 1 – Parking Maps:</p> <ul style="list-style-type: none"> Albany (Harry Riggs) Regional Airport; Albany Central Business District (CBD); Centennial Parking Sporting Precinct & North Road Administration; Emu Point; and Middleton Beach & Eyre Park. 	23/10/2019
1.3	<p>Document Reference: NLL20120880 Amended:</p> <ul style="list-style-type: none"> Amendment to the Fines, Penalties and Infringement Notices Enforcement Act 1994 (WA) - effective September 29, 2020. Amended to new section 5.96(1)(b) of the Local Government Act 1995, requires an up-to-date consolidated version of the local law to be published on the local government's website. 	27/10/2020
1.4	<p>Document Reference: NLL20120880(2) Amended:</p> <ul style="list-style-type: none"> Minor formatting and typographical error, Schedule 2, Item 10. Item 10, Clause: 2.12(3), Nature of Offence: Parking in an authorised space in a parking station without a permit, Modified Penalty: \$60. 	14/03/2025

Attachments:

- 1. PARKING AND PARKING FACILITIES AMENDMENT LOCAL LAW 2012**
- 2. DETERMINATION: METERED PARKING ZONE – ALBANY REGIONAL AIRPORT**
- 3. DETERMINATION: DEEMED PARKING STATIONS**
- 4. DEEMED PARKING STATION MAPS**

LOCAL GOVERNMENT ACT 1995

CITY OF ALBANY

PARKING AND PARKING FACILITIES AMENDMENT LOCAL LAW 2012

Under the powers conferred by the *Local Government Act 1995* and under all other powers enabling it, the Council of the City of Albany resolved on 19 February 2013 to make the following local law.

1. Citation

This Local Law shall be cited as the *City of Albany Parking and Parking Facilities Amendment Local Law 2012*.

2. Commencement

This local law will come into operation on the fourteenth day after the day on which it is published in the Government Gazette.

3. Principle Local Law

In this local law, the *City of Albany Parking and Parking Facilities Local Law Local Law 2009* as published in the Government Gazette on 12 February 2010 is referred to as the principal local law. The principal local law is amended as follows:

4. Clause 1.4 amended

In the definition for “taxi” after “to” insert “it”.

5. Clause 2 amended

- (a) Delete clause 2.9.
- (b) Re-designate clauses “2.10” through to “2.17” as “2.9” to “2.16” in sequential order.

6. Clause 3.11 amended

- (a) In clause 3.11(1)(a) delete “an” and insert “a”.
- (b) In clause 3.11(2)(a) delete “an” and insert “a”.

7. Clause 3.12 amended

Insert “Where” at the beginning of clause 3.12.

8. Schedule 2 amended

In the table—

- (a) delete Item 10; and
- (b) re-designate Items “11” through to “73” as “10” to “72” in sequential order.

Dated: 8 April 2013

The Common Seal of the City Of Albany was affixed by authority of a resolution of the Council in the presence of -

Dennis Wellington, Mayor.

Graham Foster, Chief Executive Officer

Determination: Metered Parking Zone – Albany Regional Airport

Council resolved on 13 December 2016, Resolution ED044:

Under the City of Albany Parking and Parking Facilities Local Law 2009 (as amended):

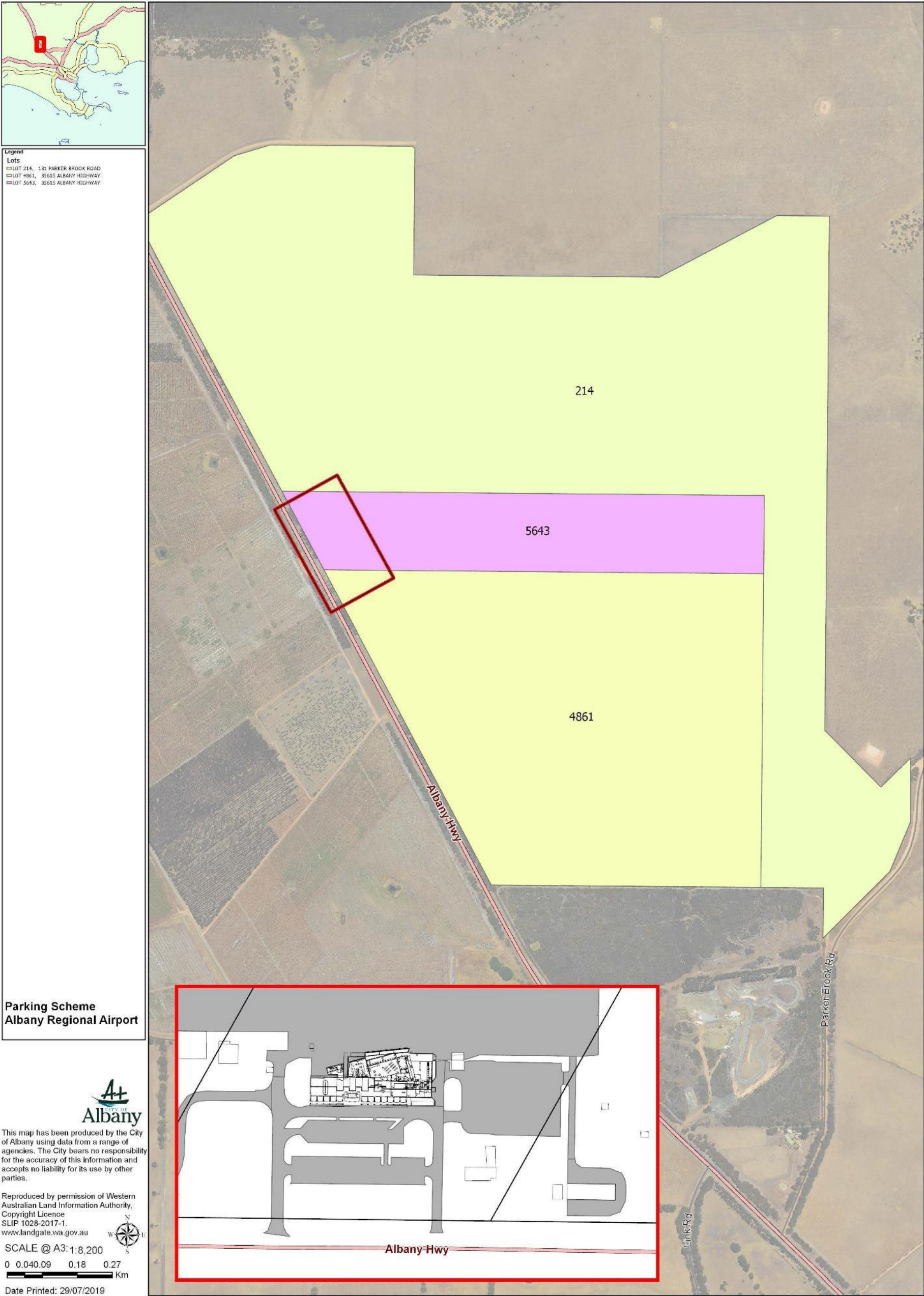
- A person is prohibited from parking a motor vehicle (which includes motorcycles) from parking in the Albany Regional Airport without a valid ticket.
- Persons must park in the designated prescribed area (as detailed in the report).
- This determination will come into effect 1 January 2017.

Determination: Deemed Parking Stations

Council resolved on the 24 September 2019, Resolution DIS175L

- **APPROVE** the **DEEMED PARKING STATIONS**, listed at the proposed Schedule 1, being:
 - Parking - Albany (Harry Riggs) Regional Airport;
 - Parking - Albany Central Business District (CBD);
 - Parking - Centennial Parking Sporting Precinct & North Road Administration;
 - Parking - Emu Point; and
 - Parking - Middleton Beach & Eyre Park;
 to the *City of Albany Parking & Parking Facilities Local Law 2012 (As amended)*:
- **NOTE** that the proposed parking stations identified in Schedule 1, shall be deemed to be a parking station to which this Local Law applies.
- **NOTE** enforcement of a parking station can only occur post community engagement, the installation of signage / line marking and prescribed notification.

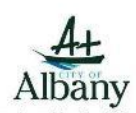
Determination: Deemed Parking Station Maps





- Legend**
- Lots**
- LOT 2, 2 TOLL PLACE
 - LOT 2, 20 PROUDLOVE PARADE
 - LOT 2, 43-15 ABERDEEN STREET
 - LOT 2, 49 ABERDEEN STREET
 - LOT 3, 15-21 ABERDEEN STREET
 - LOT 5, 190-192 YORK STREET
 - LOT 6, 184-188 YORK STREET
 - LOT 7, 184-188 YORK STREET
 - LOT 8, 104-110 STIRLING TERRACE
 - LOT 8, 162-164 YORK STREET
 - LOT 9, 112-140 STIRLING TERRACE
 - LOT 9, 156-158 YORK STREET
 - LOT 12, 47 ABERDEEN STREET
 - LOT 13, 270-284 YORK STREET
 - LOT 15, 194-208 YORK STREET
 - LOT 16, 51-59 ABERDEEN STREET
 - LOT 16, 87 FREDERICK STREET
 - LOT 20, 339-347 MIDDLETON ROAD
 - LOT 23, 139-141 ABERDEEN STREET
 - LOT 27, 112-140 STIRLING TERRACE
 - LOT 28, 112-140 STIRLING TERRACE
 - LOT 32, 4 ST EMILIE WAY
 - LOT 50, 104-110 STIRLING TERRACE
 - LOT 50, PEELS PLACE
 - LOT 64, 21A ALBANY HIGHWAY
 - LOT 66, 162-164 YORK STREET
 - LOT 66, 190-192 YORK STREET
 - LOT 67, 47 ABERDEEN STREET
 - LOT 67, YORK STREET
 - LOT 75, 112-140 STIRLING TERRACE
 - LOT 92, 16-24 PEELS PLACE
 - LOT 111, 221-227 YORK STREET
 - LOT 112, 126-140 GREY STREET WEST
 - LOT 123, 148-154 YORK STREET
 - LOT 123, 229-237 YORK STREET
 - LOT 123, 96-102 STIRLING TERRACE
 - LOT 202, 35-41 ABERDEEN STREET
 - LOT 203, 23-33 ABERDEEN STREET
 - LOT 205, 176-178 YORK STREET
 - LOT 500, 51-61 SERPENTINE ROAD
 - LOT 1396, 36-46 PROUDLOVE PARADE
 - LOT 1397, PROUDLOVE PARADE
 - LOT 1399, PROUDLOVE PARADE
 - LOT 1407, PROUDLOVE PARADE
 - LOT 1521, 62 PROUDLOVE PARADE

**Parking Scheme
CBD**

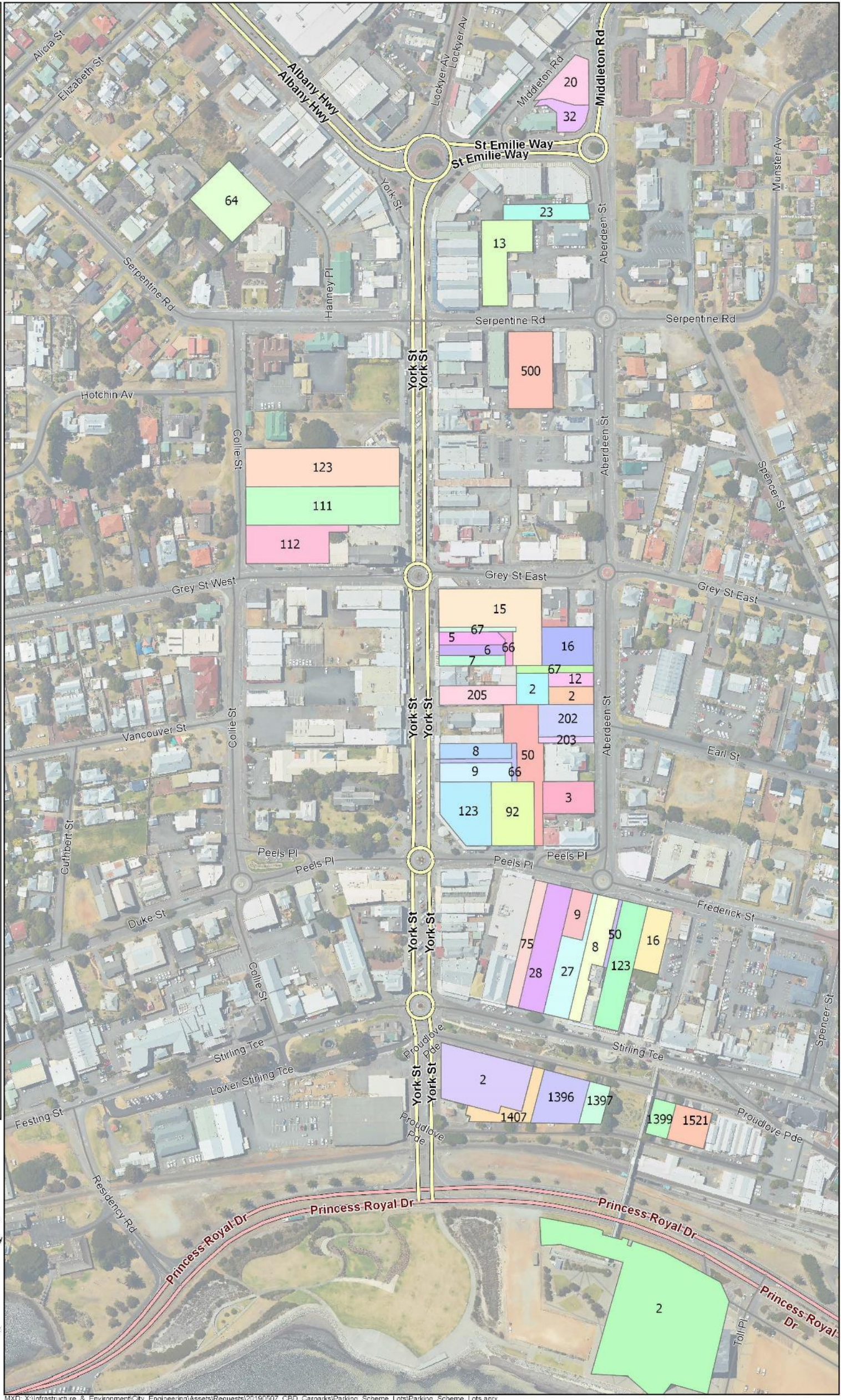


This map has been produced by the City of Albany using data from a range of agencies. The City bears no responsibility for the accuracy of this information and accepts no liability for its use by other parties.

Reproduced by permission of Western Australian Land Information Authority.
Copyright Licence
SLIP 1028-2017-1.
www.landgate.wa.gov.au



SCALE @ A3: 1:2,700
0 0.010.03 0.06 0.09 Km
Date Printed: 29/07/2019



MXD: X:\Infrastructure & Environment\City_Engineering\Assets\Requests\20190507_CBD_Carparks\Parking_Scheme_Lots\Parking_Scheme_Lots.aprx

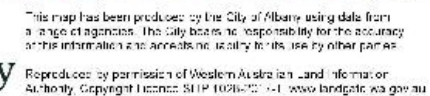
LOT 161, 157-20,
 NORTH ROAD
 LOT 177, 2-4/6
 NORTH ROAD
 LOT 178, 27-47
 NORTH ROAD
 LOT 727, 41-55
 KITCHENER ROAD
 LOT 728, 31-37
 KITCHENER ROAD
 LOT 730, BARKER
 ROAD
 LOT 725, 51-67
 BARKER ROAD
 LOT 776, 65-73
 BARKER ROAD
 LOT 777, 35-49
 KITCHENER ROAD
 LOT 778, 187
 NORTH ROAD
 LOT 729, 115
 NORTH ROAD
 LOT 740, 143-148
 NORTH ROAD
 LOT 741, 144-149
 NORTH ROAD
 LOT 710, 82-93
 BARKER ROAD
 LOT 743, 52
 BARKER ROAD
 LOT 744, 91-95
 BARKER ROAD
 LOT 775, 18
 NORTH ROAD
 LOT 1255, BARKER
 ROAD
 LOT 7567, R/R
 34381 WILKINSON
 STREET
 LOT 1264, 161
 NORTH ROAD
 LOT 1265, 161
 NORTH ROAD
 LOT 1276, BARKER
 ROAD
 LOT 1280, 156
 LOCKPORT AVENUE
 LOT 4748, 192
 NORTH ROAD

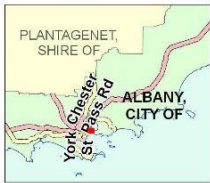
This is an aerial map of the City of Albany, Oregon, overlaid with a parcel map. The map shows various colored parcels, each labeled with a number. The colors include cyan, pink, light blue, light green, orange, yellow, purple, and red. The parcels are situated along and around major roads such as North Rd, Albany Hwy, and Middle Rd. The map also shows surrounding residential areas, a golf course, and other landmarks.

Key features and labels on the map include:

- Streets:** North Rd, Albany Hwy, Middle Rd, and various local streets like 1st St, 2nd St, 3rd St, 4th St, 5th St, 6th St, 7th St, 8th St, 9th St, 10th St, 11th St, 12th St, 13th St, 14th St, 15th St, 16th St, 17th St, 18th St, 19th St, 20th St, 21st St, 22nd St, 23rd St, 24th St, 25th St, 26th St, 27th St, 28th St, 29th St, 30th St, 31st St, 32nd St, 33rd St, 34th St, 35th St, 36th St, 37th St, 38th St, 39th St, 40th St, 41st St, 42nd St, 43rd St, 44th St, 45th St, 46th St, 47th St, 48th St, 49th St, 50th St, 51st St, 52nd St, 53rd St, 54th St, 55th St, 56th St, 57th St, 58th St, 59th St, 60th St, 61st St, 62nd St, 63rd St, 64th St, 65th St, 66th St, 67th St, 68th St, 69th St, 70th St, 71st St, 72nd St, 73rd St, 74th St, 75th St, 76th St, 77th St, 78th St, 79th St, 80th St, 81st St, 82nd St, 83rd St, 84th St, 85th St, 86th St, 87th St, 88th St, 89th St, 90th St, 91st St, 92nd St, 93rd St, 94th St, 95th St, 96th St, 97th St, 98th St, 99th St, 100th St.
- Parcels:**
 - Cyan area at the top, labeled 4743.
 - Pink area on the right, labeled 1359.
 - Light blue area on the left, labeled 101, 727, 737, 738, 1235, 1264, 1270, 1231, 739, 740, 741, 744, 742, 743, 744.
 - Light green area on the right, labeled 177, 178.
 - Orange area on the right, labeled 32.
 - Yellow area on the left, labeled 101, 728, 1255, 736, 730, 735, 1262.
 - Purple area on the left, labeled 730, 735.
 - Red area on the left, labeled 735.
- Other Labels:** Albany Hwy, Middle Rd, 1st St, 2nd St, 3rd St, 4th St, 5th St, 6th St, 7th St, 8th St, 9th St, 10th St, 11th St, 12th St, 13th St, 14th St, 15th St, 16th St, 17th St, 18th St, 19th St, 20th St, 21st St, 22nd St, 23rd St, 24th St, 25th St, 26th St, 27th St, 28th St, 29th St, 30th St, 31st St, 32nd St, 33rd St, 34th St, 35th St, 36th St, 37th St, 38th St, 39th St, 40th St, 41st St, 42nd St, 43rd St, 44th St, 45th St, 46th St, 47th St, 48th St, 49th St, 50th St, 51st St, 52nd St, 53rd St, 54th St, 55th St, 56th St, 57th St, 58th St, 59th St, 60th St, 61st St, 62nd St, 63rd St, 64th St, 65th St, 66th St, 67th St, 68th St, 69th St, 70th St, 71st St, 72nd St, 73rd St, 74th St, 75th St, 76th St, 77th St, 78th St, 79th St, 80th St, 81st St, 82nd St, 83rd St, 84th St, 85th St, 86th St, 87th St, 88th St, 89th St, 90th St, 91st St, 92nd St, 93rd St, 94th St, 95th St, 96th St, 97th St, 98th St, 99th St, 100th St.

1600 Wilshire Blvd., Los Angeles, California 90010-3000. CME, Accredited by American Board of Standards for Continuing Medical Education.





Map Legend

Lots

- LOT 501, SWARBRICK STREET
- LOT 1461, 13-17 HUNTER STREET



SCALE @ A3:
1:3,700

Kilometres
0 0.03 0.06 0.11
Date Printed: 29/07/2019



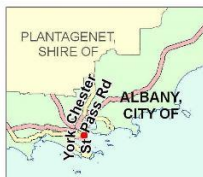
Parking Scheme Emu Point

\\001\X\Infrastructure\Environment\City_Engineering\Assets\Requests\20190527_CRD_CoPark\Parking_Scheme_Lots\Parking_Scheme_Lots.aprx



This map has been produced by the City of Albany using data from a range of agencies. The City bears no responsibility for the accuracy of this information and accepts no liability for its use by other parties.

Reproduced by permission of Western Australian Land Information Authority, Copyright Licence SLIP 1028-2017-1. www.landgate.wa.gov.au



Map Legend

Lots

- LOT 2, 5-13
GARDEN STREET
- LOT 500,
FLINDERS PARADE
- LOT 502, GOLF
LINKS ROAD
- LOT 1386, 54-62
GOLF LINKS ROAD



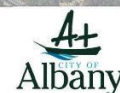
SCALE @ A3:
1:3,750

Kilometres
0 0.03 0.06 0.11
Date Printed: 29/07/2019



Parking Scheme Middleton Beach & Eyre Park

MXD: X:\Infrastructure_Environment\City_Engineering\AssetofRequests\20190507_CSD_Corporate\Parking_Scheme_Lots\Parking_Scheme_Lots.aprx



This map has been produced by the City of Albany using data from a range of agencies. The City bears no responsibility for the accuracy of this information and accepts no liability for its use by other parties.

Reproduced by permission of Western Australian Land Information Authority. Copyright Licence SLIP 1028-2017-1. www.landgate.wa.gov.au